

904H

Compact Wheel Loaders

CATERPILLAR®



Engine

Net Power	39 kW	52 hp
-----------	-------	-------

Weights

Operating Weight	4490 kg	9,900 lb
------------------	---------	----------

Buckets

Bucket Capacities	0.6 m ³ -1.0 m ³	0.8 yd ³ -1.3 yd ³
-------------------	--	--

904H Features

Loader Linkage

Z-bar loader linkage is built for strength, visibility and versatility.

Quick Coupler

The standard skid steer loader style quick coupler allows the use of many popular hydromechanical skid steer loader work tools.

High Performance Power Train

Aggressive performance helps you get more done.

Comfortable Cab

Spacious cab and easy to use controls deliver all day comfort so you can concentrate on your work.

More Work Tools

Make your 904H the most versatile machine on the job site with Caterpillar's broad range of work tools.



Contents

Operator Station.....	3
Power Train.....	4
Linkage.....	4
Work Tools.....	5
Serviceability.....	6
Customer Support.....	6
904H Compact Wheel Loader Specifications.....	7
904H Standard Equipment.....	10
904H Optional Equipment.....	10
Notes.....	11

The Cat® 904H Compact Wheel Loader delivers high performance with outstanding versatility. Spacious cab with joystick control keeps you comfortable throughout the work day, allowing you to get more done. Loader design delivers strength and durability with superior control. Do more with one machine with the skid steer loader style coupler. This coupler allows the use of Cat Skid Steer and Multi Terrain Loader hydromechanical Work Tools on the Cat Compact Wheel Loader for greater machine versatility. Expand your business with the new 904H.



Operator Station

Superior comfort keeps you productive, all day long.

Cab Comfort

Spacious, comfortable cab with increased floor space helps you stay productive. Canopy, cab with heat or cab with heat and air conditioning are available. All cabs are pre-wired, making it easy to install future options. A backlit LED display provides system information and is conveniently located in the operator's line of sight. Right side window opens fully for better ventilation or communication with workers.

Low Effort Controls

Pilot hydraulics for implement control and use with Cat Work Tools keep operator fatigue low. No linkage to adjust or wear ensures consistent control over the life of the machine. The multi functional joystick contains a 3-position Forward/Neutral/Reverse switch, an easy to control third function auxiliary hydraulics switch, and (when equipped) optional bucket positioner (return to dig) switch.

Excellent Visibility

The loader arms have been designed with visibility to the work tool in mind. Wide cab glass area and sloping rear hood provide both a 360 degree panorama and visibility within a few feet of the machine. This makes for safer operation and reduces machine damage caused by collision with unseen obstacles.

Power Train

Designed for power, durability and performance.

Engine

The MHI S4Q2 Turbo engine meets EPA Interim Tier 4 emissions requirements and delivers superior power to help you get more done.

Chassis

Rear axle oscillation helps assure four wheel ground contact for optimum traction and stability. Heavy duty axles with outboard planetary reduction gears are built for durable performance. Optional differential lock is available in the front axle only or both axles and can be easily engaged by a foot switch to the left of the steering column to increase tractive effort in poor underfoot conditions.

Power Train

Two-speed closed loop hydrostatic transmission delivers smooth transition from full rimpull to runout. Precise inching control and smooth acceleration and deceleration minimize operator fatigue. Optional speed (creeper) control and hand throttle are also offered.

Ride Control

The optional Ride Control System further enhances the already smooth road handling of the machine, resulting in increased operator comfort and higher productivity. It is suited for extreme applications where operators need to maintain bucket material load or carry a heavy work tool and have a smooth ride.



Linkage

Built for strength.

Z-Bar Design

The high performance Z-bar loader design is built for strength, visibility and versatile attachment usage. The Z-bar linkage gives the operator a clear view to the work tool and excellent dump clearance while maintaining good cycle times.



Work Tools

Do more jobs with one machine with Cat Work Tools.

The Right Tool for the Job

Increase the machine's versatility with the wide range of Cat buckets, forks and hydraulically powered work tools. Work tools can be changed quickly and easily with the machine's quick coupler system. Available work tools include:

- Buckets and Forks
- Augers
- Blades (Angle/Dozer)
- Brooms
- Cold Planers
- Grapple Buckets, Forks and Rakes
- Landscape Rakes and Tillers
- Material Handling Arm
- Power Box Rakes
- Snow Blowers
- Stump Grinders
- Trenchers
- Vibratory Compactors

Consult your Cat dealer for a complete list.

Skid Steer Loader Style Coupler

The universal skid steer loader style coupler allows the use of many Cat Skid Steer, Multi Terrain and Compact Track Loader hydromechanical work tools. Standard flow auxiliary lines and connectors are optional equipment.

Additional Options to Increase Productivity

The following options further increase your productivity:

- Return to dig work tool positioner automatically returns the bucket to level position after dumping.
- Auxiliary hydraulic lines and fittings for a 3rd hydraulic function when more than general bucket and fork work is required, such as a broom.
- Work tool wiring harness for fourth hydraulic function such as broom angling.
- Speed control (creeper) provides variable control of ground speed while maintaining optimal hydromechanical work tool speed.
- Hand throttle control provides infinitely variable means of fixing engine speed, ideal for steady operation of hydromechanical work tools.



Serviceability

Easy access and minimal maintenance requirements reduce downtime.



Convenient Service Features

- Easy to lift engine hood provides easy access to all major components and service points from ground level.
- S•O•S valve is conveniently located in the engine bay for analyzing hydraulic system cleanliness and pressure taps for service analysis, prolonging machine life.
- Two stage air cleaner with primary and secondary element and a visual restriction indicator improves service life.
- Auxiliary fuses, relays and other electrical service points are all located together behind a locked door for ease of servicing.
- Spin-on engine and hydraulic oil filters and fuel filter with water separator are vertically mounted for easier servicing.
- Heavy-duty wiring increases electrical durability and is multicolored to ease diagnosis and fault finding. Water resistant sealed connectors prevent dust and moisture from interfering with the electronics.
- Wheels and tires are mounted on studs rather than secured with bolts for easier wheel removal/installation.

Customer Support

Support you can count on.

Superior Dealer Service

Your Cat dealer is ready to assist you with your purchase decision and everything after.

- Make comparisons of machines, with estimates of component life, preventative maintenance and cost of production.
- Financing packages are flexible to meet your needs.
- Your Cat dealer can evaluate the cost to repair, rebuild and replace your machine, so you can make the right choice.
- For more information on Cat products, dealer services and industry solutions, visit us at www.cat.com.



904H Compact Wheel Loader Specifications

Engine

Model	MHI S4Q2-T	
Gross Power	41 kW	55 hp
Net Power	39 kW	52 hp
SAE J1349 Rating	39 kW	52 hp
ISO 9249 Rating	39 kW	52 hp
EEC 80/1269 Rating	39 kW	52 hp
Bore	88 mm	3.5 in
Stroke	103 mm	4 in
Displacement	2.505 L	153 in ³

- Engine meets Interim Tier 4 emissions regulations.
- Rated power at 2,400 rpm.

Weights

Operating Weight	4490 kg	9,900 lb
------------------	---------	----------

Operating Specifications

Tire Size	12-16.5, 10PR	
Rated Bucket Capacity	0.6 m ³	0.8 yd ³
Breakout force	35.6 kN	8,003 lb
Rated operating load @ full turn, bucket	1250 kg	2,756 lb
Straight tipping load, bucket	3000 kg	6,614 lb
Full turn static tipping load, bucket	2500 kg	5,511 lb
Rackback, transport position	49 Degrees	
Rated operating load @ full turn, forks (EN 474-3:2006, firm and level ground, 500 mm (20 in) load center) (80% of FTSTL)	1600 kg	3,527 lb
Rated operating load @ full turn, forks (EN 474-3:2006, rough terrain, 500 mm (20 in) load center) (60% of FTSTL)	1200 kg	2,646 lb

- Specifications shown are for the 904H with cab, 75 kg (165 lb) operator and general purpose bucket.

Transmission

Travel Speed 1	7 km/h	4.3 mph
Travel Speed 2	20 km/h	12.4 mph

Cab

ROPS	SAE J1040 MAY94, ISO 3471:1994	
FOPS	SAE J/ISO 3449 APR98 Level I and II; ISO 3449:1994 Level I and II	

Hydraulic System

Main relief	207 bar	3,000 psi
3rd valve flow	83 L/min	22 gal/min
Hydraulic cycle time – lift	4.5 seconds	
Hydraulic cycle time – dump	0.8 seconds	
Hydraulic cycle time – lower, float	3.2 seconds	

Service Refill Capacities

Cooling System	8 L	2 gal
Fuel tank	83 L	22 gal
Hydraulic system	43 L	11 gal
Engine Oil	7.5 L	2 gal

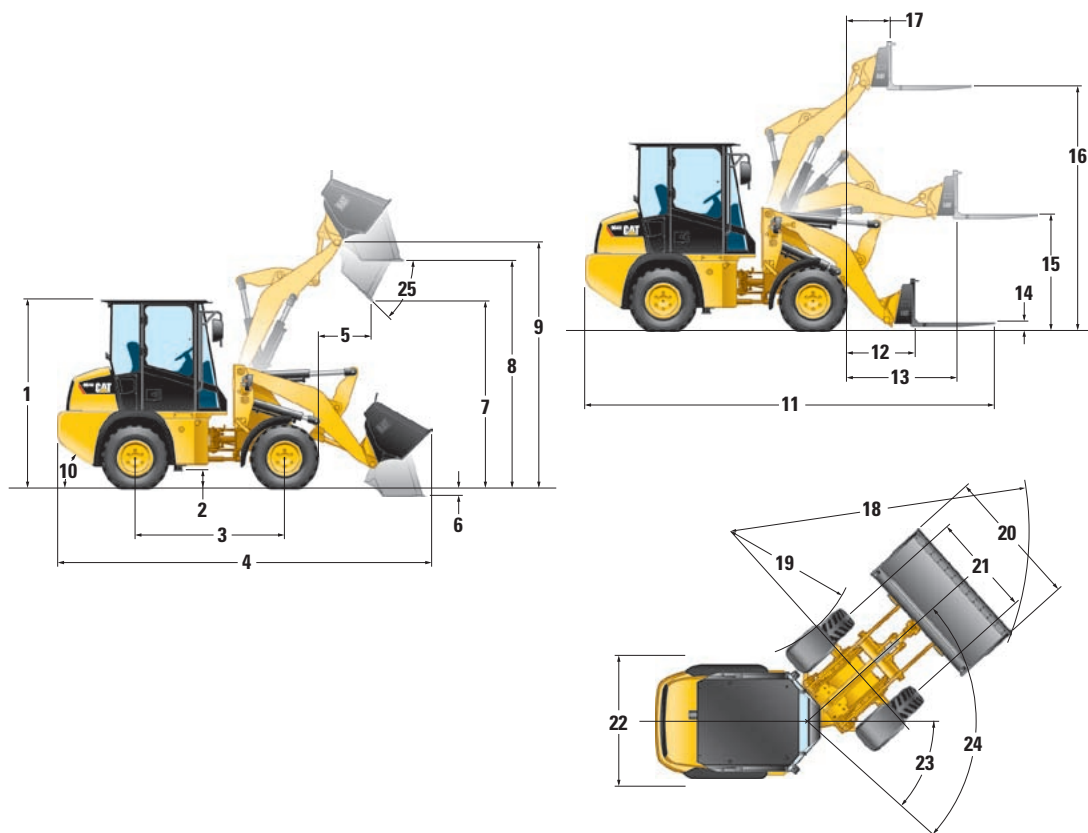
Buckets

Bucket Capacities	0.6 m ³ -	0.8 yd ³ -
	1.0 m ³	1.3 yd ³

904H Compact Wheel Loader Specifications

Dimensions

All dimensions are approximate. Dimensions may vary with bucket. Refer to Operating Specifications.



1	Cab Height	2390 mm	7 ft 10 in
2	Ground Clearance	245 mm	9.6 in
3	Wheelbase	1900 mm	6 ft 3 in
4	Overall Length with Bucket	4695 mm	15 ft 5 in
5	Reach at Maximum Dump Height	665 mm	2 ft 2 in
6	Dig Depth	90 mm	3.6 in
7	Maximum Dump Height	2380 mm	7 ft 10 in
8	Load Over Height	2885 mm	9 ft 6 in
9	Hinge Pin at Maximum Height	3110 mm	10 ft 2 in
10	Departure Angle (degrees)		35°
11	Overall Length with Forks	5250 mm	17 ft 3 in
12	Reach at Ground Level	855 mm	2 ft 10 in
13	Maximum Reach	1380 mm	4 ft 6 in
14	Fork Depth Above Ground	95 mm	3.7 in
15	Fork Height at Maximum Reach	1450 mm	4 ft 9 in
16	Maximum Fork Height	3075 mm	10 ft 1 in
17	Fork Reach at Maximum Height	560 mm	1 ft 10 in
18	Turning Radius Over Bucket	3850 mm	12 ft 8 in
19	Turning Radius Inside Tire	1675 mm	5 ft 6 in
20	Width Over Bucket	1780 mm	5 ft 10 in
21	Tire Gauge	1330 mm	4 ft 4 in
22	Machine Width	1645 mm	5 ft 5 in
23	Articulation Angle		42°
24	Steering Angle – Left/Right		84°
25	Dump Angle at Maximum Height		44°

Maximum Material Densities

Based on ISO 7546:1983 and rated operating loads at full turn.

Bucket Type		General Purpose	Multi Purpose	Light Material
Rated capacity	m ³ (yd ³)	0.6 (0.8)	0.6 (0.8)	1.0 (1.3)
Dump height	mm (in)	2380 (94)	2380 (94)	2205 (87)
Maximum material density	kg/m ³ (lb/yd ³)	2095 (3,531)	1995 (3,362)	1195 (2,014)
Bucket width	mm (in)	1780 (70)	1770 (70)	1880 (74)

Cab Features

	Comfort Cab	Canopy
Standard Cab Features		
Left side door	●	
Fixed steering column	●	●
Vinyl static seat	●	●
Left window – sliding top section	●	
Heated rear window	●	
Coat hook	●	●
Cabin light	●	
Internal mirror	●	●
Heater	●	
Storage tray and cup holder	●	●
Right window with holdback latch	●	
Optional Cab Features		
Radio ready kit (wiring, speaker, antenna and grill)	●	
Sun visor	●	●
External mirrors (2)	●	●
Air conditioning	●	
Vinyl suspension seat	●	●
Cloth suspension seat	●	

904H Standard Equipment

Standard equipment may vary. Consult your Caterpillar dealer for details

TRANSMISSION

Transmission, 20 km/h (12.4 mph) with standard axles
Transmission inching function
Hydrostatic drive

LOADER

Skid steer loader quick coupler
Loader arm float function
Connect under pressure hydraulic quick connector

ENGINE

MHI S4Q2-T Interim Tier 4 emissions compliant
Two stage air cleaner with visual indicator
Cat Extended Life Coolant
Lockable engine compartments
Easy quick release fuel filter/water separator
Engine oil drain valve

ELECTRICAL

Battery, maintenance free, 650 CCA
Engine cold starter aid
Alternator, 90 amp
Roading lights
Back up alarm

GENERAL

Pressure test points
Recovery hitch pin ready
S•O•S ports
Fuel filler cap

OPERATOR ENVIRONMENT

Multifunction joystick with direction control
Auxiliary control switch
Warning indicators for major systems
Wiper/washer front and rear (cab only)
Easy clean cab floor

Left side door (cab only)

Personal storage
Cup holder
Heated rear window
ROPS & FOPS
Wrist rest
Seat belt, 50 mm (2 in), retractable
Cabin light
Auxiliary power sockets
Coat hook
Heater with window, side, feet and defrost vents
Sound suppression
Steering column, fixed
Heavy duty floor mat
Seat, static, vinyl
Left sliding window (cab only)
Storage tray
Internal mirror

904H Optional Equipment

Optional equipment may vary. Consult your Caterpillar dealer for details

TRANSMISSION

Creeper control
Hand throttle
Ride control
100% Differential Lock on both axles

LOADER

Proportional auxiliary hydraulic circuit
Return to dig work tool positioner

ENGINE

Engine block heater, 120V
Cat extended life coolant, protects to -50° C (-58° F)
Turbine style precleaner

ELECTRICAL

Rotating beacon
Work tool wiring harness
Working lights, two front and two rear
Battery, heavy duty, 880 CCA

GENERAL

Tire options including Flexport and flotation tires
Recovery hitch pin
Guard, overhead, FOPS II rating

WORK TOOLS

For all work tool options, consult your Cat dealer

OPERATOR ENVIRONMENT

Air conditioning
Canopy
Cab, Comfort
Proportional auxiliary control
External mirrors (2)
Seat belt, 75 mm (3 in), retractable
Seat, adjustable suspension, vinyl
Seat, adjustable suspension, cloth
Radio ready kit including speakers (cab only)
Sun visor

904H Compact Wheel Loader

For more complete information on Cat products, dealer services, and industry solutions, visit us on the web at www.cat.com

© 2008 Caterpillar Inc.
All rights reserved

AEHQ6016 (10-2008)
Replaces AEHQ5638-01

Materials and specifications are subject to change without notice. Featured machines in may include additional equipment. See your Caterpillar dealer for available options.

CAT, CATERPILLAR, SAFETY.CAT.COM, their respective logos, "Caterpillar Yellow" and the POWER EDGE trade dress, as well as corporate and product identity used herein, are trademarks of Caterpillar and may not be used without permission.

CATERPILLAR®