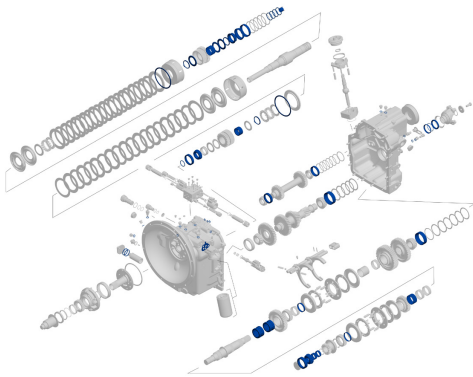


# Customer Repair Solutions

## 4D/E/F Backhoe Loader Transmission Rebearing & Reseal Kit

Maintaining your transmission and repairing before failure is critical to the life of your transmission. To minimize risk of extended downtime and failure, a Transmission Rebearing and Reseal provides extended protection to mating parts such as gears and shafts that are more costly to replace.

Our Transmission Rebearing and Reseal kit is a comprehensive repair package with everything you need to perform the repair yourself. From warning signs to look for to step-by-step repair instructions, we have you covered.



### Warning signs

Watch for these common repair indicators

- >> Oil Leaks
- >> Transmission Noise or Slippage
- >> Excessive Oil Temperature
- >> Presence of abnormal wear in S•O•S<sup>SM</sup>



## Elements of the Transmission Rebearing and Reseal Kit

### Customizable Parts List

- >> Bearings
- >> Gaskets and Seals
- >> Seal Rings

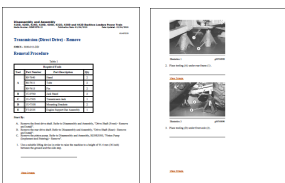
### Recommended Tools

- >> Wheel Chock
- >> Support Stand Assembly
- >> Air Hydraulic Jack Group
- >> Mounting Adapter Group
- >> Engine Stand
- >> Link Bracket
- >> Crossbar
- >> Sliding Plate
- >> Forcing Screw
- >> Spring Compressor
- >> Three Jaw Puller
- >> Bearing Puller Group
- >> Retaining Ring Pliers

### Additional Options

- >> Clutch and Friction Discs
- >> Replacement Gears
- >> Replacement Shafts
- >> Replacement Torque Converter
- >> Other replacement parts

### Repair Instructions



**TECHNICAL ADVICE?  
DEALER CONTACT INFO**

For more information, visit [www.cat.com/repairoptions](http://www.cat.com/repairoptions)

**BUILT FOR IT.**

[www.cat.com](http://www.cat.com)

© 2017 Caterpillar • All Rights Reserved • Printed in USA  
CAT, CATERPILLAR, BUILT FOR IT, their respective logos, "Caterpillar Yellow," the "Power Edge" trade dress as well as corporate and product identity used herein, are trademarks of Caterpillar and may not be used without permission.

