

# 267B/277B/ 287B

Multi Terrain Loaders



	267B		277B		287B	
<b>Engine</b>	Cat® 3044C DIT		Cat® 3044C DIT		Cat® 3044C DIT	
<b>Model</b>	Cat® 3044C DIT		Cat® 3044C DIT		Cat® 3044C DIT	
<b>Net Power</b>	52 kW	70 hp	58 kW	78 hp	58 kW	78 hp
<b>Gross Power</b>	54 kW	73 hp	61 kW	82 hp	61 kW	82 hp
<b>Operating Specifications</b>	Rated Operating Capacities: 35% Tipping Load		Rated Operating Capacities: 35% Tipping Load		Rated Operating Capacities: 35% Tipping Load	
	920 kg	2030 lb	936 kg	2065 lb	1143 kg	2520 lb
	Rated Operating Capacities: 50% Tipping Load		Rated Operating Capacities: 50% Tipping Load		Rated Operating Capacities: 50% Tipping Load	
	1315 kg	2900 lb	1338 kg	2950 lb	1632 kg	3600 lb

## 267B/277B/287B Multi Terrain Loaders

*Designed and built by Caterpillar to deliver exceptional performance and versatility, ease of operation, serviceability and customer support.*

---

### Operator Station

Operator comfort and ease of operation are designed into the operator's station from every aspect including ergonomic features such as low-effort joystick controls and an adjustable contoured seat. **pg. 4**

---

### Rubber Track Undercarriage

The unique rubber track undercarriage and suspension provide exceptional flotation, traction and stability with minimal pressure on the ground. **pg. 6**

---

### 287B Vertical Lift Linkage

The vertical lift linkage is an efficient and lightweight design that provides high load carry capacity. **pg. 7**

---

### Quick Coupler and Cat Work Tools

The universal work tool interface and quick coupler helps make the Cat Multi Terrain Loader the most versatile machines on the job site. Add the wide range of performance-matched Cat Work Tools for maximum utility and production. **pg. 11**

---

### Customer Support

Caterpillar dealers offer unmatched customer support, with excellent warranty programs and fast parts availability, resulting in maximum uptime and minimum repair costs. Equipment maintenance services help optimize machine performance and reliability. **pg. 12**

*The Caterpillar Multi Terrain Loader, with its many work tool options, is a highly versatile, compact construction machine. It is designed to deliver traditional Cat reliability and productivity in the toughest working conditions.*



---

### High Performance Power Train

The Cat 3044C DIT engine provides high engine horsepower and torque, allowing part-throttle operation for lower sound levels and lower fuel consumption. Anti-stall feature maximizes power to the drive train and work tools without stalling the engine. **pg. 8**

---

### Advanced Hydraulic System

The hydraulic system in the Cat Multi Terrain Loader is designed for maximum power and reliability. More hydraulic power means better overall performance. Fewer components mean fewer hydraulic connections and reduced chance of leaks. **pg. 9**

---

### Serviceability

The Cat Multi Terrain Loader offers quick and easy routine maintenance and service. The rear door opens 90 degrees and the cooling package tilts up out of the way for the unparalleled access to the engine compartment. The cab also tilts up for easy access. **pg. 10**



## Operator Station

*World-class operator station provides exceptional working comfort with excellent visibility, enhanced fingertip controls and optimum instrumentation.*



*Operator Station*

### **Low Effort Machine Controls.**

Ergonomic, pilot hydraulic controls give operators precision control of Cat Multi Terrain Loaders with minimal effort. The right joystick controls loader up/down and tilt control and the left joystick controls forward and reverse travel speed plus direction. Both joysticks use an intuitive “S” control pattern. Optional deluxe joysticks now provide more auxiliary controls than before, using positive-action buttons to provide

precision fingertip control of many machine functions, including:

- Proportional work tool hydraulics
- Work tool electrical

Basic and Deluxe joystick functions include:

- One-touch continuous auxiliary hydraulic flow
- Momentary auxiliary hydraulic flow

**Cab Conveniences.** Long hours in the Cat Multi Terrain Loader are made easier by many standard conveniences that include a new 12 volt DC power socket. Side, sliding windows offer protection from the elements and allow fresh air ventilation. Redesigned side windows are now removable for easy cleaning. Cabs with the door option installed feature a new, automatic lock-out switch that prevents accidental damage by disabling the loader functions when the door is open.

### **High-Efficiency Climate Controls.**

Operating in extreme temperatures can be more comfortable with the optional cab air conditioner and heater installed. Airflow is increased up to 83 percent and is now directed through six adjustable vents. Twice as many vents make defrosting the optional front door and side windows easier. The heater and air conditioner can be ordered separately or together.

**Instrumentation.** Cat Multi Terrain Loader instrument panels and gauges are simple, easy to use and reliable. Bright indicator lights and audible warnings signal any critical system situation. Positive feel switches, with status lights, control most on/off functions. An engine air cleaner restriction indicator is now in the cab for easier monitoring.

**Visibility.** Operating ease and productivity is enhanced on the Cat Multi Terrain Loader by excellent visibility. The wide cab opening offers an exceptional view of the work tool. The sloped angle of the engine compartment allows excellent visibility to the rear of the machine. A new, standard convex rearview mirror gives the operator a panoramic view of the machine's rear and sides. For better visibility in low-light conditions, the standard forward lights are now adjustable 10 degrees in any direction.

**Access/Egress.** The Cat Multi Terrain Loader cab is designed to make machine operation simple, productive and comfortable. Getting in and out of the cab is easy through a wide opening with three point grab irons and skid-resistant steps. Tilt cylinders are neatly located under the lift arms so not to interfere with operator access and egress. Plenty of uncluttered floor space makes stepping into the cab even easier.

**Cab Packages.** Several cab packages and options are available. The standard cab offers features such as an adjustable contoured seat, cushioned contoured armbar, dual throttle controls, pilot operated joysticks, 12 volt DC power socket and optional cup holder.



*Excellent Visibility*

## Rubber Track Undercarriage

*The unique rubber track undercarriage provides low ground pressure, stability, high traction, fast travel and suspension.*



*Rubber Track Undercarriage*



### **Rubber Track Undercarriage with Suspension.**

The rubber track undercarriage transfers machine weight to the ground through wheeled contact points. The machine weight is distributed evenly throughout the track.

**Large Contact Area.** The large ground contact area helps maximize traction and minimize ground pressure.

**Positive Track Drive.** The elevated positive track drive keeps drive components away from ground debris.

**Durable Rubber Track.** The rugged, durable rubber track is lightweight and pliable, yet reinforced with high tensile strength cords.

**Torsion Axles.** The heavy duty torsion axles suspend each side of the undercarriage from the machine frame to absorb most of the shock, especially over rough conditions, for smooth travel.

### **Multiple Suspension Levels.**

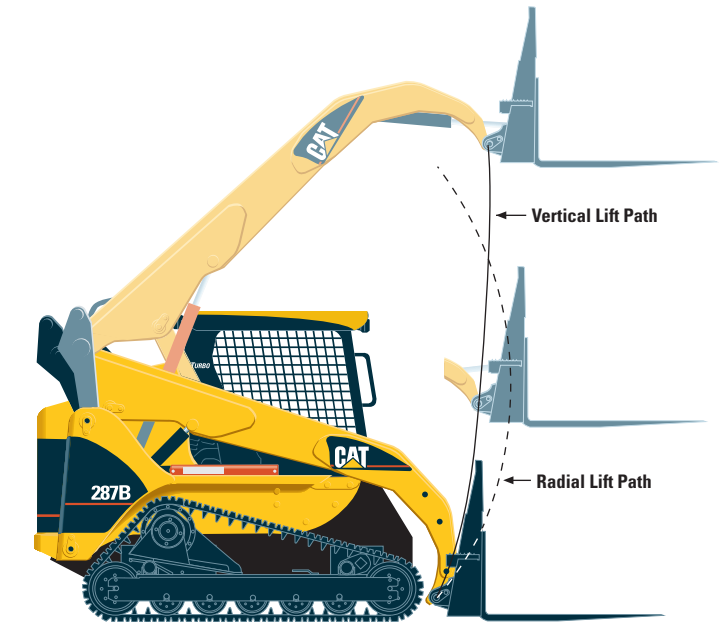
The 267B/277B undercarriage offers multiple levels of suspension through two torsion axles and six articulating wheel carriages per side. The 287B undercarriage offers a single torsion axle per side for suspension.

## 287B Vertical Lift Linkage

*Designed and built for operation in the toughest working conditions requiring vertical lifting capabilities.*

**Lift Arms.** The loader lift arms are purpose-designed to provide a substantially straight load path into the machine and a good viewing area to the work tool and side of the machine. The lift arms are also designed to handle heavy loads without twisting and bending for exceptional reliability.

**Spherical Bearing.** The spherical bearing distributes the load from the lift arms into the frame by allowing the pin to rotate and pivot within the bore, reducing the chance of developing fatigue cracks in the arms.



*Vertical Lift*



## High Performance Power Train

*The Caterpillar hystat power train delivers aggressive performance and easy operation.*



*Aggressive Performance*

**Cat Diesel Power.** The heart of the Cat Multi Terrain Loader power train is the Caterpillar 3044C DIT diesel engine. This rugged, reliable, four cylinder engine offers aggressive performance and a fast torque curve for quick response. It is also a low emission engine, fully U.S. EPA Tier 2 compliant.

**Dual Engine Throttle Controls.** The hand and foot throttles allow the operator to match engine speed to the task. The hand throttle is ideal for jobs requiring consistent engine speed — such as cold planing, trenching or snow blowing. The foot throttle lets the operator vary engine speed and minimizes fuel consumption for other tasks such as load and carry, truck loading, grading and dozing.

**Anti-Stall Feature.** The anti-stall system on the Cat Multi Terrain Loader allows maximum power to the tracks while minimizing engine stalling. The system helps maximize productivity for experienced operators and makes it easier for novice operators to become productive.

**Closed-Loop, High Output, Hydrostatic System.** The dual, closed-loop, axial piston hydrostatic pumps are driven directly off the engine. The pumps provide pressure and flow to two fixed displacement motors that power the final drive motors, driving the tracks. No chains are used.



## Advanced Hydraulic System

*Hydraulic system has built-in reliability and provides exceptional lift, breakout and auxiliary power to work tools.*

**Power and Reliability.** Maximum power and reliability are built into the Cat Multi Terrain Loader hydraulic system. In addition to providing power to drive the tracks, this system also provides the loader lift and tilt functions, powers the auxiliary circuit to drive work tools and drives the engine cooling fan.

**Hydraulic Pumps.** The hydraulic pumps are driven directly off the engine for maximum hydraulic performance and reliability — no belts are used. Pumps are fixed-displacement and provide 81 L/min (22 gal/min) at high idle. Maximum system pressure for the loader and standard auxiliary circuits is 23 000 kPa (3335 psi). Control of the loader lift and tilt functions is by hydraulically-operated joystick controls for low effort and precise operation.

**Auxiliary Hydraulics.** Standard auxiliary hydraulics to power work tools is available through quick connect hydraulic couplings that are rigidly mounted to the loader arm. The Caterpillar line of high pressure XT™ ES hoses and O-ring face seals help assure a leak-free system.

**Reliability and Cleanliness.** Hydraulic system reliability and cleanliness are improved by using single components in place of multiple components, such as the monoblock hydraulic valve and monoblock pumps. Fewer leak points improve reliability and result in a cleaner machine. In addition, hydraulic oil flows through a 5-micron spin-on filter. A filter restriction indicator is located in the operator station. A 74-micron screen in the hydraulic tank prevents larger debris from entering the system and causing damage to the hydraulic components.



*Powerful and Reliable*

**Hydraulic Oil Cooler.** A high-efficiency, hydraulic oil cooler lets the Cat Multi Terrain Loader work longer and harder in higher ambient temperatures, even when using continuous flow work tools. The high capacity, hydraulic oil reservoir also helps keep operating temperatures lower.

## Serviceability

*Quick access and superior design makes the Cat Multi Terrain Loader easy to service and maintain.*



### *Tilting Cab*

**Service Access.** The rear door opens 90 degrees for easy access to both sides of the in-line (lengthwise) mounted engine.

**Filters.** All filters are easily accessible, which makes routine service quicker and virtually spill-free.

**Cooling System.** The radiator, hydraulic oil cooler and grill tilt up to increase access to the cooling system during maintenance and allow easier cleaning of debris from between the grill and cooling packages. The cooling fan is hydraulically-driven for quieter operation and to eliminate the service and maintenance that comes with belt driven fans.

**Easy Tilting Cab.** The machine cab can now be tilted rearward by an individual using a single tool. The cab is held in place by a self-latching mechanism. When the cab is tilted back, all hydraulic pumps, motor, valves, lines and fuel tank are accessible for quicker, easier service.

**Removable Belly Pan.** A removable belly pan section in the floor of the machine's lower frame provides excellent access for periodic cleaning.

**Electrical and Hydraulic Lines.** Cleaner routing of electrical and hydraulic lines compared to former models improves reliability and simplifies service.

**Maintenance Points.** Maintenance points are grouped in easily accessible locations.

**Caterpillar Scheduled Oil Sampling (S-O-S<sup>SM</sup>).** The scheduled oil sampling valves are standard to allow regular monitoring of the engine and hydraulic oil quality.

### **Other Standard Service Features.**

The following help make servicing fast and easy:

- Easy access to battery, air filter and single engine belt
- Sight glasses on hydraulic tank and radiator allow quick, easy level checks
- Air filter restriction indicator now located inside the operator station
- Ecology drains simplify changing engine and hydraulic oil
- Grease fittings are countersunk to prevent damage
- Extended life coolant and 500-hour engine oil change intervals

## Quick Coupler and Cat Work Tools

Choose from a wide variety of tools that are performance matched to the Cat Multi Terrain Loader.



Optional Quick Coupler

**Quick Coupler.** Work tools can be changed quickly and easily with the Cat Multi Terrain Loader's quick coupler system. The universal coupler interface features:

- Low profile side plate designed for optimum match to work tools and minimal material packing
- Opposing wedges ensure a tight tool fit, even after years of use
- Rugged design and large contact area absorbs loads and minimizes stress
- Vertical pins are chrome plated and lubricated for smooth engagement and prevention of corrosion
- Coupler allows excellent visibility to work tools and unobstructed entry and exit to the cab

The standard quick coupler features manual engagement and disengagement of work tools using two high leverage handles.

An optional hydraulic quick coupler is also available and allows engagement and disengagement of work tools without the operator needing to exit the machine. Control of the coupler by use of a rocker switch inside the cab makes work tool changes quicker and easier.



Cat SG16 Stump Grinder

**Cat Work Tools.** Cat Work Tools extend the versatility of the Cat Multi Terrain Loader. Designed and built for optimum performance and durability, these tools deliver high productivity, long service life and excellent value:

- Angle Blades
- Augers
- Backhoes

- Brooms
- Buckets
  - General purpose
  - Grapple
  - Light material
  - Multi purpose
  - Utility
- Cold planers
- Compactor, vibratory
- Hammers
- Landscape rakes
- Landscape tillers
- Material handling arm
- Pallet forks
- Snowblower
- Stump grinder
- Trenchers
- Wheel saw

## Customer Support

*Cat dealer services help you operate longer with lower costs.*



*Worldwide Parts Availability*

**Machine Selection.** With five different Cat Multi Terrain Loaders to choose from, selecting the right machine is easy when you consult your Caterpillar dealer. Your dealer helps you make detailed machine comparisons before you purchase.

You can also build the machine that is right for you. Go on-line anytime to review the full range of features and options available using the Build and Quote application on your Cat dealer's website or [www.Cat.com](http://www.Cat.com).

**Purchase Options.** Purchase options let you look beyond the initial machine price. With your Cat dealer, you can review available financing options plus look at day-to-day operating costs. You can also look at dealer services that can be included in the cost of the machine to yield lower equipment owning and operating costs over the life of the machine.

**Customer Support Agreements.** Customer Support Agreements offer you a variety of service and maintenance options that can be customized to best fit your specific needs. These can cover the entire machine and included work tools to help protect your investment.

**Machine Support.** Machine support is one of your Cat dealer's primary goals. Nearly all parts are available at your Cat dealer. If not, your dealer can use the Caterpillar worldwide computer network to find the closest in-stock parts to minimize machine downtime. Your Cat dealer can also save you money by suggesting Cat Remanufactured parts that carry the same warranty as new, but with savings of 40 to 70 percent.

**Service Plans.** Maintenance Service Plans help you manage machine maintenance. Choose from a wide range of maintenance plans and services at the time you purchase a machine. Repair option plans guarantee the cost of repairs up front. Diagnostics programs such as Scheduled Oil Sampling, Coolant Sampling and Technical Analysis help you avoid downtime and unscheduled repairs.

**Training.** Operator training by Cat dealers can improve your operator's techniques and help boost your profits. Your Cat dealer also has training video tapes, literature, application and equipment training courses, plus other ideas to help you maximize your machine investment.

**Security Systems.** Cat machine security systems help you manage your Cat Multi Terrain Loader. This dealer-installed option provides control of machine access by untrained operators or unauthorized personnel. Use up to 50 unique key ID's to customize machine access to fit your needs. You can program this system to allow access only during certain hours or days.

**Repair, Rebuild or Replace.** The repair, rebuild or replace choices become even more evident when you consult your Caterpillar dealer. Your Cat dealer can help evaluate the costs involved so you can make the right decision every time.

## Engine

Model		
- 267B/277B/287B	Cat 3044C DIT	
Gross Power SAE J1995		
- 267B	54 kW	73 hp
- 277B/287B	61 kW	82 hp
Engine Power ISO 14396		
- 267B	53 kW	71 hp
- 277B/287B	60 kW	80 hp
Net Power 80/1269/EEC		
- 267B	53 kW	71 hp
- 277B/287B	59 kW	78 hp
Net Power ISO 9249		
- 267B	53 kW	71 hp
- 277B/287B	59 kW	78 hp
Net Power SAE 1349		
- 267B	52 kW	70 hp
- 277B/287B	59 kW	78 hp
Displacement		
- 267B/277B/287B	3.3 L	201 in <sup>3</sup>
Bore		
- 267B/277B/287B	94 mm	3.7 in
Stroke		
- 267B/277B/287B	120 mm	4.7 in

## Weights

Operating Weight		
- 267B	4250 kg	9371 lb
- 277B	4269 kg	9411 lb
- 287B	4660 kg	10,275 lb

## Operating Specifications

Rated Operating Capacities:		
35% Tipping Load		
- 267B	920 kg	2030 lb
- 277B	936 kg	2065 lb
- 287B	1143 kg	2520 lb
Rated Operating Capacities:		
50% Tipping Load		
- 267B	1315 kg	2900 lb
- 277B	1338 kg	2950 lb
- 287B	1632 kg	3600 lb
Ground contact area		
- 267B/277B	1.87 m <sup>2</sup>	2898 in <sup>2</sup>
- 287B	1.68 m <sup>2</sup>	2610 in <sup>2</sup>
Ground Pressure		
- 267B/277B	21.7 kPa	3.1 psi
- 287B	26 kPa	3.8 psi
Tipping Load		
- 267B	2630 kg	5800 lb
- 277B	2676 kg	5900 lb
- 287B	3265 kg	7200 lb
Breakout Force, Tilt Cylinder		
- 267B/277B	2487 kg	5484 lb
- 287B	2498 kg	5508 lb
Breakout Force, Lift Cylinder		
- 267B/277B	2112 kg	4657 lb
- 287B	2372 kg	5230 lb

Dimensions shown are based on standard machine equipped with 1981 mm (78 in) GP Bucket on the 267B/287B and 1981 mm (78 in) GP Bucket with Bolt-on Teeth on the 277B. The specifications for the Cat 267B/277B/287B are static and conform to SAE J732 JUN 92, SAE J818 MAY87 and ISO 5998:1986.

## Hydraulic System

Hydraulic Flow			
- 267B/277B/287B	Standard		
Loader Hydraulic Pressure			
- 267B/277B/287B	23 000 kPa	3335 psi	
Loader Hydraulic Flow			
- 267B/277B/287B	81 L/min	22 gal/min	
Hydraulic Power			
- 267B/277B/287B	31.9 kW	42.8 hp	

## Cab

ROPS	
- 267B/277B/287B	SAE J1040 MAY94, ISO 3471:1994
FOPS	
- 267B/277B/287B	SAEJ/ISO 3449 APR98 Level I, ISO 3449:1992 Level I
FOPS Level II	
- 267B/277B/287B	SAEJ/ISO 3449 APR 98 Level II, ISO 3449:1992 Level II (optional)

## Power Train

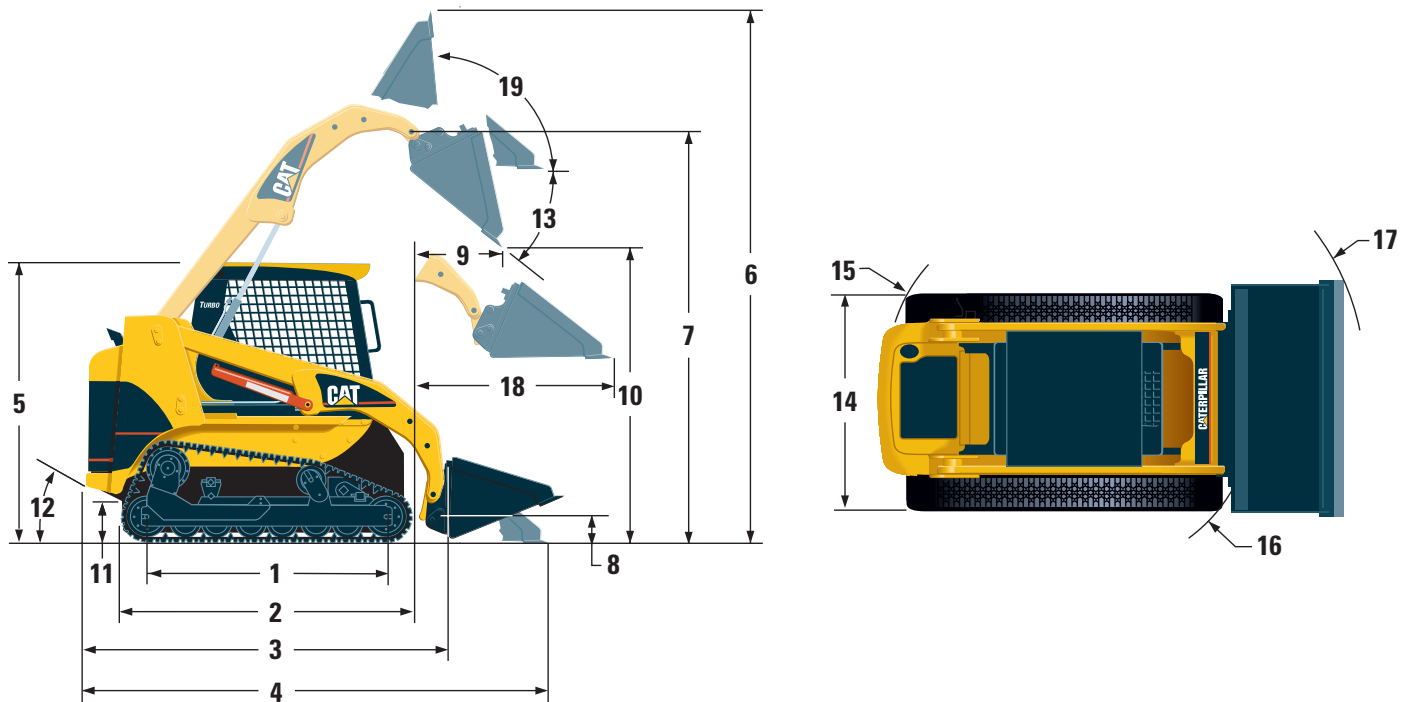
Travel Speed — Forward			
- 267B/277B/287B	11.2 kph	7 mph	
Travel Speed — Reverse			
- 267B/277B/287B	11.2 kph	7 mph	

## Service Refill Capacities

Cooling System			
- 267B/277B/287B	10 L	2.6 gal	
Engine Crankcase			
- 267B/277B/287B	10 L	2.6 gal	
Fuel Tank			
- 267B/277B	95 L	25 gal	
- 287B	110 L	29 gal	
Hydraulic System			
- 267B/277B	52 L	13.7 gal	
- 287B	51 L	13.5 gal	
Hydraulic Tank			
- 267B/277B/287B	35 L	9.2 gal	

# Dimensions

All dimensions are approximate.



<b>1</b>	Length of Track on ground		
	- 267B/277B	2045 mm	81 in
	- 287B	1842 mm	73 in
<b>2</b>	Overall Length of track		
	- 267B/277B	2494 mm	98 in
	- 287B	2293 mm	90.3 in
<b>3</b>	Length w/o Bucket		
	- 267B/277B	2923 mm	115 in
	- 287B	2901 mm	114 in
<b>4</b>	Length w/Bucket on ground		
	- 267B/277B	3684 mm	145 in
	- 287B	3697 mm	145 in
<b>5</b>	Height to Top of Cab		
	- 267B/277B	2074 mm	82 in
	- 287B	2123 mm	84 in
<b>6</b>	Max Overall Height		
	- 267B/277B	4025 mm	158 in
	- 287B	4182 mm	165 in
<b>7</b>	Hinge Pin Height at max lift		
	- 267B/277B	3091 mm	121 in
	- 287B	3250 mm	128 in
<b>8</b>	Hinge Pin Height at carry position		
	- 267B/277B	251 mm	10 in
	- 287B	218 mm	8.6 in
<b>9</b>	Reach at max lift and dump		
	- 267B/277B	676 mm	27 in
	- 287B	837 mm	33 in
<b>10</b>	Clearance at max lift and dump		
	- 267B/277B	2349 mm	93 in
	- 287B	2386 mm	94 in

<b>11</b>	Ground Clearance		
	- 267B/277B	353 mm	14 in
	- 287B	283 mm	11 in
<b>12</b>	Departure Angle		
	- 267B/277B	62°	
	- 287B	47°	
<b>13</b>	Maximum Dump Angle		
	- 267B/277B	40°	
	- 287B	51°	
<b>14</b>	Vehicle Width		
	- 267B/277B	1898 mm	75 in
	- 287B	1962 mm	77 in
<b>15</b>	Turning Radius from center — left		
	- 267B/277B	1545 mm	60.8 in
	- 287B	1615 mm	63.6 in
<b>16</b>	Turning Radius from center — right		
	- 267B/277B	1603 mm	63.1 in
	- 287B	1514 mm	59.6 in
<b>17</b>	Turning Radius from center — full		
	- 267B/277B	2512 mm	98.9 in
	- 287B	2433 mm	95.8 in
<b>18</b>	Max Reach w/Arms Parallel to ground		
	- 267B/277B	1455 mm	57.3 in
	- 287B	1378 mm	54.3 in
<b>19</b>	Rack Back Angle at max height		
	- 267B/277B	97.4°	
	- 287B	87°	

## Standard Equipment

*Standard equipment may vary. Consult your Caterpillar dealer for details.*

### CONTROLS

- Pilot Operated Implement Control, RH
- Pilot Operated Hydrostatic Transmission Control, LH
- Hand and Foot Throttle

### ELECTRICAL

- 12 volt Electrical System
- 90 ampere Alternator
- Ignition Key Start/Stop Switch
- Lights:
  - Gauge Backlighting
  - Two Rear Tail Lights
  - Two Adjustable Front Halogen Lights
  - Dome Light

### OPERATOR ENVIRONMENT

- Gauges:
  - Fuel Level
  - Hour Meter
- Operator Warning System Indicators:
  - Air Filter Restriction
  - Alternator Output
  - Armrest Raised/Operator Out of Seat
  - Engine Coolant Temperature
  - Engine Oil Pressure
  - Glow Plug Activation
  - Hydraulic Filter Restriction
  - Hydraulic Oil Temperature
  - Park Brake Engaged
- Adjustable Vinyl Seat
- Pull Down Ergonomic Contoured Armrest
- Control Interlock System, when operator leaves seat or armrest raised:
  - Hydraulic System Disables
  - Hydrostatic Transmission Disables
  - Parking Brake Engages
- ROPS Cab, Open, Tilt Up
- FOPS, Level I
- Top and Rear Windows
- Interior Rear View Mirror
- 12 volt Electric Socket

### POWER TRAIN

- Caterpillar 3044C DIT Diesel Engine
  - Drain, Engine Oil Ecology
  - Fuel Priming Pump
  - Glow Plugs Starting Aid
  - Liquid Cooled, Direct Injection
- Air Cleaner, Dual Element, Radial Seal
- S•O•S<sup>SM</sup> Sampling Valves, Engine Oil and Hydraulic Oil Filter, Spin-on, Hydraulic
- Filters, Bayonet-Type, Fuel and Water Separator
- Tilt Up Radiator/Hydraulic Oil Cooler
- Muffler, Standard
- Spring Applied, Hydraulically Released, Wet Multi Disc Parking Brakes
- Hydrostatic Transmission
- Rubber Track Drive (457 mm [18 in] wide)

### OTHER STANDARD EQUIPMENT

- Engine Enclosure — Lockable
- Extended Life Antifreeze -36° C (-33° F)
- Machine Tie Down Points (4)
- Coupler, Mechanical
- Support, Lift Arm
- Hydraulic Oil Level Sight Gauge
- Radiator Coolant Level Sight Gauge
- Radiator Expansion Bottle
- XT<sup>TM</sup> Hose
- Auxiliary, Hydraulics, Continuous Flow
- Heavy Duty, Flat Faced Quick Disconnects
- Split D-Ring to route Work Tool hoses along side left lift arm
- Electrical Outlet, Beacon
- Belly Pan Cleanout



## Optional Equipment

*Optional equipment may vary. Consult your Caterpillar dealer for details.*

Alarm, Backup

Battery, Heavy Duty, 880 CCA

Belt, Seat, 75 mm (3 in), for Static Seat

Belt, Seat, 75 mm (3 in), for Suspension Seat

Control Groups

Horn

Work Tool Electrical (C1/C2 Switch)

Proportional

Debris Barrier

Door, Front, Safety Glass with Wiper-Washer

Door, Front, Polycarbonate with Wiper-Washer  
(for Demolition use)

Floormat, Deluxe

FOPS, Level II (Attaches to existing FOPS)

Headliner

Heater and Defroster

Air Conditioning, Heater, Defrost

Engine, Coolant Heater

Hydraulics, Auxiliary, Front, Proportional

Hydraulics, Self-Leveling

Hydraulic Quick Coupler

Lifting Eye, Single Point

Lifting Eyes, Four Point

Lights, Warning Beacon (with Switch)

Lights, Rear Working

Oil, Hydraulic, Cold Climate

Seat, Suspension

Window, Side, Sliding



---

## Notes

# 267B/277B/287B Multi Terrain Loaders

AEHQ5568 (12-03)

Replaces 267 AEHQ5428-01, 277 AEHQ5429-02, 287 AEHQ5499

For more complete information on Cat products, dealer services,  
and industry solutions, visit us on the web at [www.CAT.com](http://www.CAT.com)

© 2003 Caterpillar  
Printed in U.S.A.

Materials and specifications are subject to change without notice.  
Featured machines in photos may include additional equipment.  
See your Caterpillar dealer for available options.

**CATERPILLAR**<sup>®</sup>