



G112/G115

G125/G140

Contractor's Grapples

CAT[®]

<u>Grapple Model</u>	<u>Cat Excavator</u>	<u>Linkage</u>
G112	315B L	315
	318B L	B
	320B L	B/C
G115	320B L	B/C
	322B L	S/D
	325B L	C

<u>Grapple Model</u>	<u>Cat Excavator</u>	<u>Linkage</u>
G125	325B L	C/D
	330B L	D/E
G140	345B L	F/G
	350	F/G
	365B L	V/W

Cat® G112, G115, G125, G140 Contractor's Grapple

Loading and Sorting Versatility

Caterpillar Contractor's Grapples are powerful and versatile tools with features uniquely suitable for demolition of brick and wood structures and land clearing. The basic 2-over-3-tine construction and wide jaw opening also lends itself well to material handling. This includes sorting, loading, and, where possible compacting, of rock, scrap, pipe, waste material, and demolition debris.

The rugged box type construction with internal reinforcement provides maxi-

mum strength and rigidity while keeping weight at a minimum. Replaceable wear plates made of abrasion resistant steel on the inside tip of the tines significantly prolong their life.

Since the mechanical grapple operates off the excavator bucket cylinder, no additional hydraulics are required to operate the tool. The bucket dump and curl controls open and close the upper 2-tine moving jaw.

The offset pivot pin design incorporates a heavy duty, large diameter hardened pivot pin. This pin is independent of the pin on the stick of the excavator, ensuring long, low maintenance service life. It also increases the universality of the grapple because it can be mounted on any excavator in the same basic weight class.

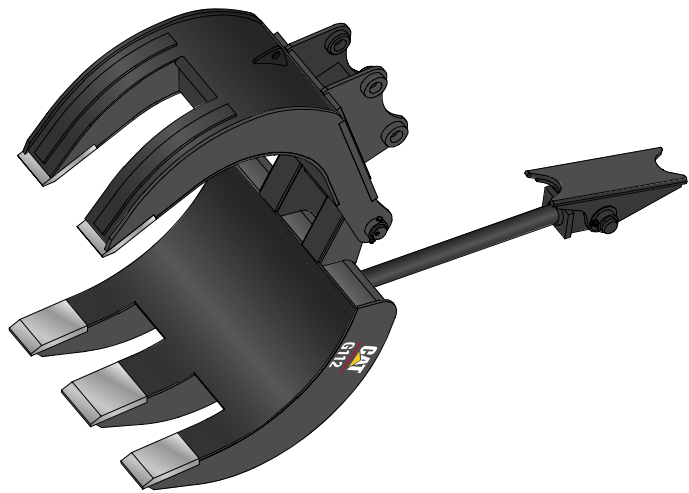
Commonality

The mechanical grapples, shears and pulverizers utilize the same welded mounting plate on the stick within the same weight class of machines. This compatibility among tools affords cost and time savings.

The offset pin configuration causes the lower 3-tine jaw to move 15" - 25" as the jaws close, depending on the grapple size. This allows the operator to use the grapple for loading purposes within the full reach of the tool. This lower jaw movement increases productivity over fixed jaw grapples.



Contractor's Grapple



Matching Guide

Stick Mounted / Reach Boom

Contractor's Grapple			
Model	Cat Excavator	Stick Range meters	feet
G112	315B L	2.25 - 2.6 m	7' 5" - 8' 6"
	318B L	2.25 - 3.2 m	7' 5" - 10' 6"
	320B L	1.9 - 3.9 m	6' 3" - 12' 8"
G115	320B L	1.9 - 2.9 m	6' 3" - 9' 7"
	322B L	2.5 - 3.6 m	8' 2" - 11' 10"
	325B L	2.7 - 3.2 m	8' 10" - 10' 6"
G125	325B L	2.7 m	8' 10"
	330B L	3.3 - 3.9 m	10' 10" - 12' 10"
G140	345B L	3.4 - 4.8 m	11' 2" - 15' 9"
	350	3.1 - 4.8 m	10' 2" - 15' 9"
	365B L	2.8 - 4.67 m	9' 4" - 15' 4"

Specifications

Model		G112	G115	G125	G140
Weight including brackets		1300 kg 2,865 lb	1750 kg 3,860 lb	2800 kg 6,175 lb	3400 kg 7,500 lb
Dimensions					
Length		2750 mm 108.3"	2900 mm 114.2"	3030 mm 119.3"	3100 mm 122.0"
Height		2700 mm 106.3"	3100 mm 122.0"	3250 mm 128.0"	3750 mm 147.6"
Jaw width (fixed)		1025 mm 40.4"	1150 mm 45.3"	1250 mm 49.2"	1350 mm 53.1"
Jaw width (moving)		660 mm 26.0"	725 mm 28.5"	775 mm 30.5"	850 mm 33.5"
Jaw opening*	min.	2400 mm 94.5"	2750 mm 108.2"	2850 mm 112.2"	3350 mm 131.9"
	max.	2550 mm 100.4"	2900 mm 114.2"	3000 mm 118.1"	3500 mm 137.8"
	close	220 mm 8.7"	265 mm 10.4"	285 mm 11.2"	310 mm 12.2"
Jaw depth		1175 mm 46.3"	1415 mm 55.7"	1425 mm 56.1"	1640 mm 64.6"
The welded mounting plate on the stick is compatible with the following work tools		G115 P115/P120 S115	G112 P115/P120 S115	G140 P130 S128	G125 P130 S128

Notes:

*Depends on machine size

Contractor's Grapples

Caterpillar recommends falling object guards in applications where there is a possibility of falling objects. Please consult your Caterpillar dealer for these guards.

GEHQ0170

© 2000 Caterpillar
Printed in U.S.A.

Materials and specifications are subject to change without notice.
Featured machines in photos may include additional equipment.
See your Caterpillar dealer for available options.

CATERPILLAR[®]