



**CVP40,
CVP75,
CVP110**

**Vibratory Plate
Compactor**



**CAT
CVP40**

Cat® Compactor

Cat Machine

CVP40

**416D, 420D, 426C, 430D, 436C,
438C, 446B, 307C**

CVP75

311C, 312C, 315C, 317B, 318B

CVP110

320C, 322C, 325B, 330B

CVP40, CVP75, CVP110 Vibratory Plate Compactor

Designed to meet the needs of today's contractors, Caterpillar® Vibratory Plate Compactors provide superior compaction force in a reliable, low-maintenance package. These units produce high-power impulses at a rate of 2200 impacts per minute, driving soil particles close together for solid, stable compactions. Compactors enhance the versatility of backhoe loaders and excavators, and make compacting a faster, more efficient and cost effective part of the job. Cat® Compactors are the superior choice for any job site's compaction tasks.

Compactors are ideal for:

- trench compaction
- foundation work/rework
- waste compaction
- breaking up frozen coal, salt, sand or other materials
- driving pilings, sheeting, fence posts or I-beams

Cat compactors are versatile tools, designed to make your job easier. Deploying the compactor on a machine is much faster and more efficient than a walk-behind model. And the Cat Compactor can go places where walk-behind compactors can't or shouldn't go. No matter how deep the trench or how steep the slope, if the machine can reach it, the Cat Compactor can work there. For added flexibility, mounting brackets can be bolted on at a 90° angle for compacting where the trench/work area is best accessed from one side.

Cat quality components and design features ensure reliability and cost-effective operation in the most adverse working conditions. The heavy duty steel frame and solid rubber bushings deliver the maximum amount of power to the ground while minimizing machine impact. The eccentric vibration mass is driven by a high-efficiency motor for consistently reliable power. Oil-bath bearings and an integral hydraulic flow control valve protect the compactor motor from potentially damaging conditions, making operating Cat Compactors a low-maintenance, low cost proposition. And, of course, they're backed up by the legendary Caterpillar service system; no other compactor can offer such complete system support.

Cat Compactors are performance-matched to Cat machines, and integrate closely with the Cat Hammer line. Brackets and hydraulic kits are fully interchangeable between hammers and compactors. Three sizes of compactor are available to match with Cat Backhoe Loaders or Hydraulic Excavators. Only Caterpillar can offer this total system solution of compactor, hammer, kit and machine; all fully compatible, and every single component backed by Caterpillar quality.

Cat Compactors are ready to go when you are. When the job demands superior compaction performance and unmatched reliability, specify Caterpillar Vibratory Plate Compactors.



1 Oil-Bath Bearings

Hardened steel shaft bearings operate in a continual oil bath. Bearing reliability is second to none; and there's no need for daily greasing.

2 Protected Hydraulics

Hydraulic hoses are protected inside the frame of the compactor, avoiding most sources of hydraulic hose damage.

Jumper lines are routed out the back of the compactor, keeping hoses out of the way, even in tight trenches.

3 Integral Pressure/Flow Control Valve

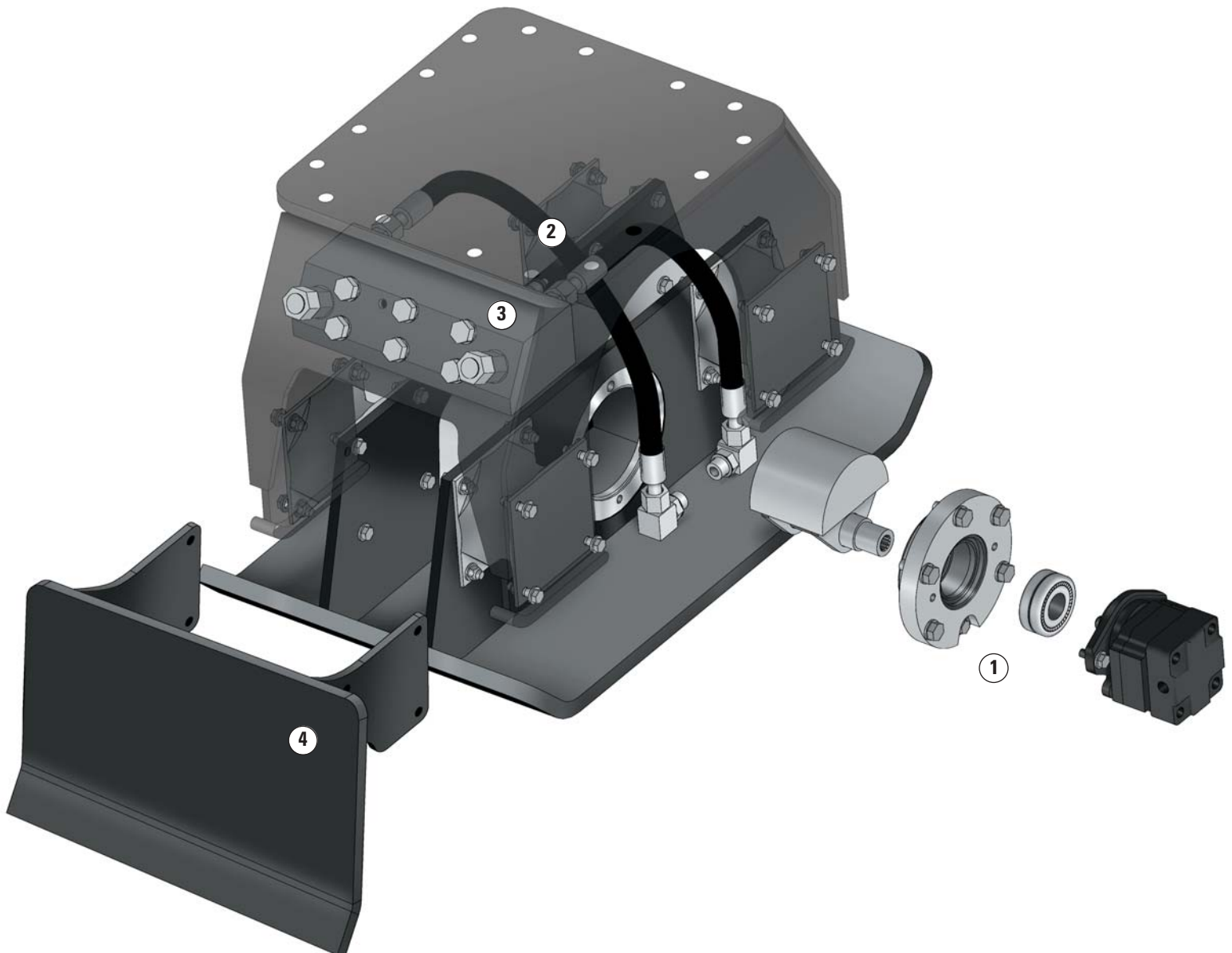
Every Cat Compactor includes a pressure/flow control valve as standard. The valve protects the compactor from damaging pressures and flows, enhancing reliability. Also, one compactor can be used on multiple machines without requiring additional hydraulic adjustment.

4 Backfill Blade

An optional bolt-on backfill blade allows the compactor to easily push loose material into place, for very fast work when backfilling or moving material around. Blades can be mounted on both front and back of the compactor.

5 Easy Installation

Cat compactors are 100% compatible with Cat hammer brackets and jumper hydraulic kits. Compactors can be utilized with Pin-Grabber Couplers, Dedicated Hydraulic Quick Couplers or Pin-Lock Couplers. Whatever your machine, coupler or configuration, Cat Compactors are designed to fit Cat machines perfectly. No guesses. No compromises. No problem.



CVP40, CVP75, CVP110 Vibratory Plate Compactor

Vibratory Plate Compactor Specifications

		CVP40 205 - 5900	CVP75 205 - 5901	CVP110 205 - 5902
Backfill Blade		211 - 8200	212 - 3450	212 - 0789
Weight (w/o Bracket or Blade)	lbs (kg)	884 (401)	1765 (801)	2319 (1052)
Impulse Force	lbs (kg)	8928 (4050)	16508 (7488)	24669 (11190)
Impact Frequency	blows/min	2200	2200	2200
Plate Dimensions	in (mm)	23 x 38 (584 x 965)	29 x 43 (737 x 109)	34 x 47 (864 x 1194)
Plate Area	ft ² (m ²)	6.1 (0.567)	8.6 (0.799)	11.1 (1.031)
Height	in (mm)	24.5 (622)	30.3 (770)	35.5
Width	in (mm)	23 (584)	29 (737)	34 (864)
Base Plate Pressure	psi (kPa)	10.16 (70.05)	13.33(91.91)	15.43 (106.39)
Machine Requirements				
Carrier Weight	lbs (kg)	10000 - 25000 (4536 - 11340)	16000 - 42000 (7258 - 19051)	30000 - 75000 (13608 - 34020)
Flow	gpm (lpm)	18 - 22 (68 - 83)	28 - 32 (106 -121)	38 - 42 (144 - 159)
Pressure	psi (kPa)	1800 - 2200 (12411 - 15168)	2000 - 2500 (13790 - 17237)	2000 - 2500 (13790 - 17237)

www.CAT.com

© 2001 Caterpillar

Materials and specifications are subject to change without notice.
Featured machine in photos may include additional equipment.
See your Caterpillar dealer for available options.

GEHQ0181 (09-01)

