

238⁵ HYLAB

248⁵ HYLAB

Lattice Boom Crawler Crane
150-ton (136.08 mt)

Lattice Boom Crawler Crane
200-ton (181.44 mt)

- Quiet & powerful Tier III engine
- All hydraulic power with fine inching control
- Dedicated remote engine/hydraulic cooling
- Compact travel drives
- Completely sealed lower
- Self-assembly and disassembly (no helper crane required)
- Counterweight biscuit design provides ease of transport and variety of configurations
- Counterweight removal system sits counterweight on the ground
- Transports with base section and 10 ft insert

Link-Belt
CRANES

238 **HYLAB5**

248 **HYLAB5**

- Big capacities
- Freefall - standard
- Awesome operator control and comfort
- Easy to transport - base section stays on for transport!

Remote-control operated hydraulic counterweight removal cylinders

Counterweight "biscuit" design allows for various configuration options and easy transport

Sealed (oil-filled) track rollers, and drive planetaries and compact hydrostatic drives add up to outstanding reliability and maintenance-free operation.

54% more travel torque than the LS-238



Sealed boom hoist bearings in mast and bail

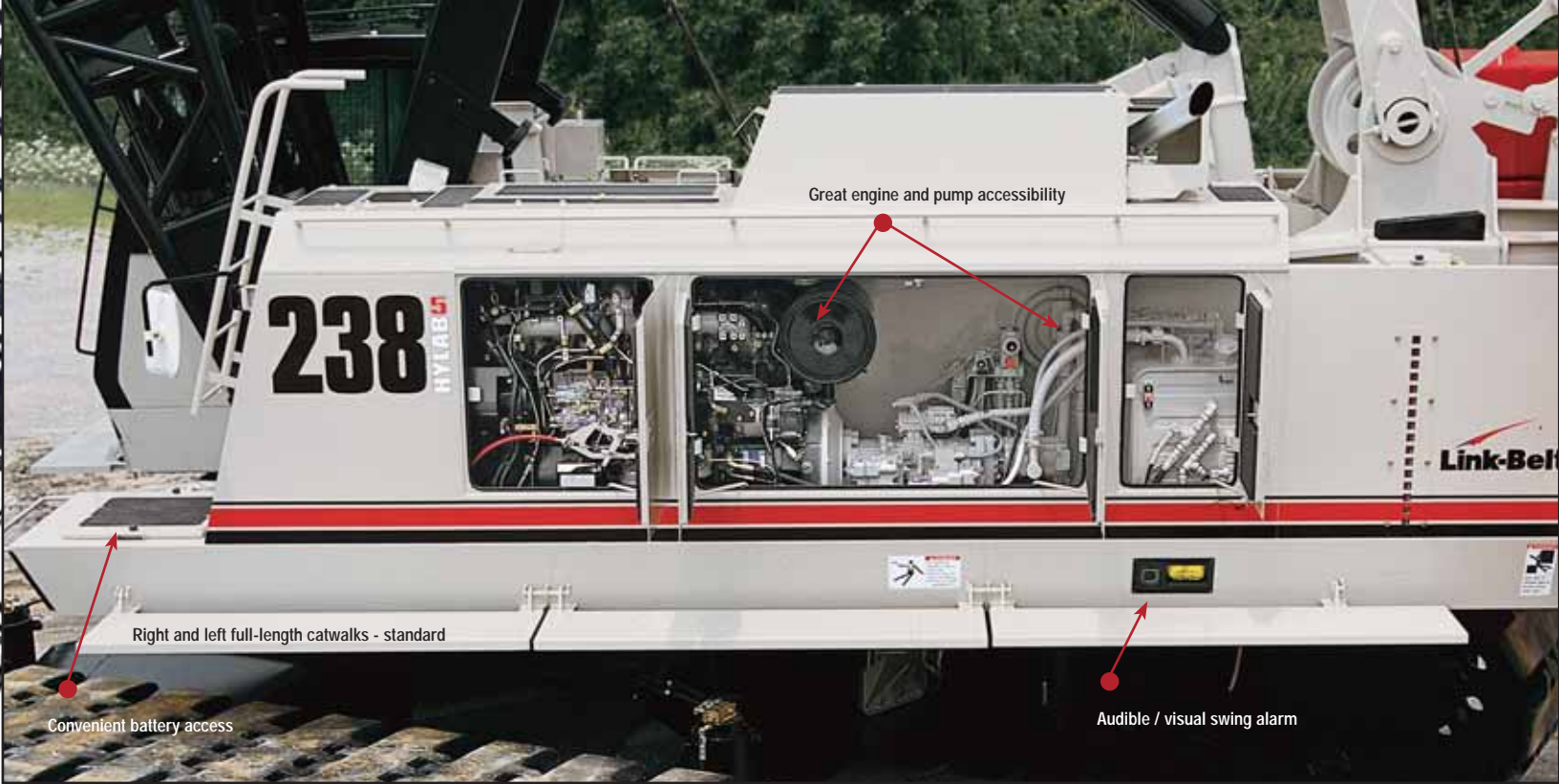
Spring-loaded cushioned backstops

Optional 10 ft self-assembly section

Non-slip safety strips and full-length catwalks provide sure-footed access to the crane upper

Carbody jacks with live hydraulics - standard





Great engine and pump accessibility

238
HYLAB 5

Link-Belt

Right and left full-length catwalks - standard

Convenient battery access

Audible / visual swing alarm

Smooth, reliable power – quiet and problem free

- Standard winch package includes power up/power down and true gravity freefall
- Six pump hydraulic system provides smooth, uninterrupted performance
- Remote oil cooler with thermostatically controlled fan insures cool hydraulics
- High travel torque keeps crane mobile on job site



Sealed sheave bearings

Boom hoist winch with automatic brake

238
HYLAB 5



Low-effort crawler quick disconnects can attach in minutes -- no tools required

Awesome air, comfort & control at your fingertips

The spacious HYLAB cab is ergonomically designed for maximum visibility, operating comfort and control with these standard features:

- 18,000 BTU air conditioning and 19,000 BTU heating run through upper and lower vents
- Rated capacity limiter with load cell located in boom hoist dead end
- Pilot-operated armchair controls with adjustable sliding console
- Toe throttle pedal
- Travel levers conveniently located on right hand console

Operator's cab console features include:

- Complete engine monitoring
- Free-fall mode indicator
- Anti-two block override switch
- Boom hoist override switch
- Limit alarm indicator light
- System override switch and indicator light
- Front, rear and third drum lock switch
- Backlit instrumentation gauges with warning lamps



Available attachments provide strength and versatility

Conventional open throat boom

- **238 H5:** 50 to 260 ft (14.24 to 79.25 m) conventional boom
 - 70" x 62" (1.78 x 1.57 m) in-line pin-connected tube boom attachment and open throat top section
- **248 H5:** 50 to 280 ft (14.24 to 85.34 m) conventional boom
 - 80" x 68" (2.03 m x 1.73 m) in-line pin-connected tube boom attachment and open throat top section
- Main chord members are made with 100,000 psi yield material with high strength lattice.
- Bar pendants (248 H5 conventional only) — stow with boom connecting pins on each extension for ease of transport
- Boom suspension is achieved through 10-part boom hoist reeving.
- Standard equipment wear blocks protect lattice sections from wire rope scuffing.

Auxiliary 5 ft (1.5 m) tip extension

- Optional — designed to provide clearance between two working hoist lines

Boom and jib — open throat

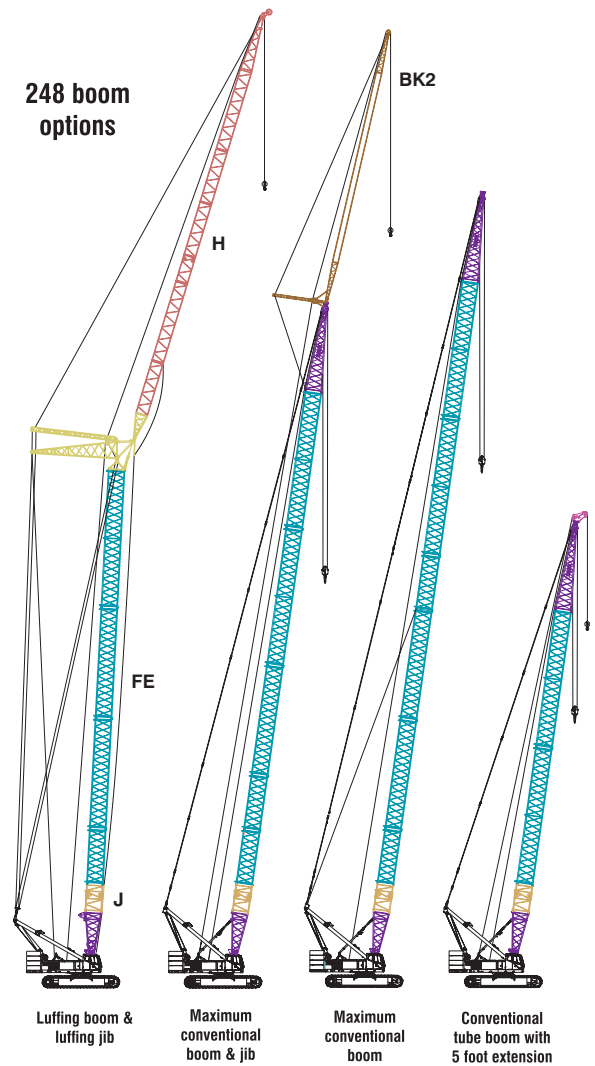
- **238 H5:** 230 ft + 75 ft (70.10 + 22.86 m) maximum tube boom + fixed jib
 - 308 ft (93.88 m) maximum tip height
- **248 H5:** 240 ft + 100 ft (73.15 + 30.48 m) maximum tube boom + fixed jib
 - 345 ft (105 m) maximum tip height

Luffing attachment

- **238 H5:** 27 ton (24.5 mt) capacity, 345 ft (105.16 m) luffing attachment with 360° capacities, utilizing conventional boom for luffing boom
- **248 H5:** 42.5 ton (38.56 mt) capacity, 380 ft (115.82 m) luffing attachment with 360° capacities, utilizing conventional boom for luffing boom

All boom sections are manufactured in Lexington, Kentucky for fast, accessible, easy service, parts and replacement.

248 boom options



238 boom options

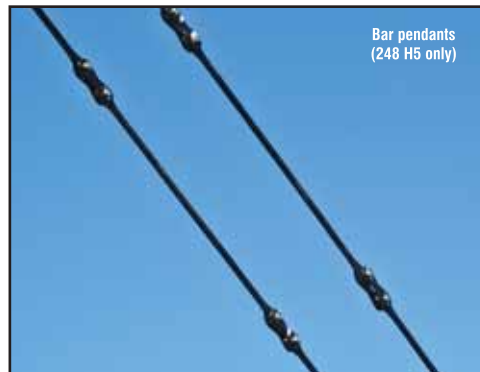


→ The boom top section features heavy duty steel sheaves and terminator sockets and wedges. Standard pin-on points for attachment of options such as a fixed jib, tip extension and adapters for universal pile driving leads with quick reeve ability.

In-line boom suspension load cell, standard with anti-two block system for both front and rear drum



Boom connecting pin holders



Bar pendants (248 H5 only)





Transports with base section & 10 ft insert — start lifting immediately!

- Transports with base section and optional 10 ft (3.05 m) rigging insert
- 13,000 lb "biscuit"-style counterweight maximizes transportability
- Simple counterweight removal system lowers counterweights all the way to the ground
- Carbody jacks are plumbed live — no need to disconnect
- Optional three-legged lift sling handles counterweight and crawlers
- 238 H5 moves in 7 loads, 248 H5 moves in 8 loads — both with full boom, jib and counterweight
- Self-assembly and disassembly (no helper crane required)



Link-Belt
CRANES

Lexington, Kentucky
www.linkbelt.com

© Link-Belt is a registered trademark. Copyright 2005. All rights reserved. We are constantly improving our products and therefore reserve the right to change designs and specifications.