

238

HYLARB

HSL SERIES

150 ton (137 mt)

Lattice Crawler Crane

PRELIMINARY SPECIFICATIONS

- Tier 4 Isuzu power 282 hp (210 kw)
- New standard freefall wet brake winches with automatic brake, 26mm wire rope front & rear
- New 30 ton jib
- All main boom extensions common with 238 H5
- Hook and pin side frames
- New HSL-style operator's cab
- Modular counterweight design
- Optional remote sensing - download vital data
- Range control
- Upper guard rails
- Rear view camera with color monitor
- Bullet-proof hydraulic pilot-operated controls

Link-Belt
C R A N E S

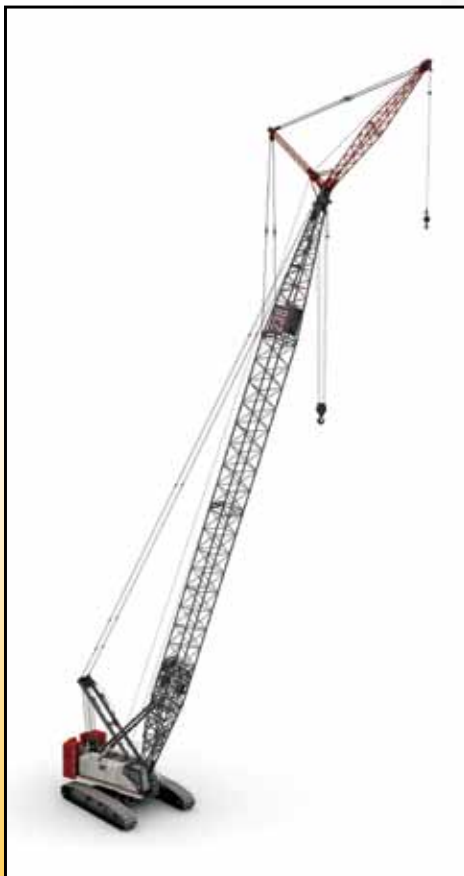


238 HYLAB HSL SERIES

150 ton (137 mt) Lattice Crawler Crane

PRELIMINARY SPECIFICATIONS

- 50-260 ft (15.24 - 79.25 m) tubular lattice boom
- Max. boom & jib combination: 230 ft + 80 ft (70.1 m + 24.38 m)
- Max. luffer combination: 165 + 150 + 30 ft (50.29 + 45.72 + 9.14 m)
- Max. winch line pull: 46,924 lbs (21 284.4 kg)
- Max. winch line speed: 507 fpm (154.5 mpm)



TRANSPORTATION WEIGHTS

Main transport load	86,000 lbs (39 009 kg)
"A" counterweight	20,000 lbs (9 072 kg)
Cheek weights	6 @ 15,000 lbs (6 804 kg)
Total counterweight	110,000 lbs (49 895 kg)
Side frames	2 @ 35,000 lbs (15 876 kg)

**So fast and easy
to assemble and
disassemble,
you make money
every time you
move it!**



Link-Belt Construction Equipment Company
Lexington, Kentucky | www.linkbelt.com

© Link-Belt is a registered trademark. Copyright 2011. All rights reserved.
We are constantly improving our product and therefore reserve the right to
change designs and specifications. Litho in U.S.A. 2/11 874 #4389