



345C MH

Material Handler



Engine

Engine Model	Cat® C13 ACERT®	
Net Flywheel Power	257 kW	345 hp

- The 345C MH meets U.S. Tier 3 and EU Stage III exhaust emissions requirements.
- Net power advertised is the power available at the flywheel when the engine is equipped with fan, air cleaner, muffler, and alternator.
- No engine derating needed up to 2300 m (7,500 ft).

Weights

Operating Weight	57 431 kg	126,615 lb
------------------	-----------	------------

- All weights shown are for machines equipped with 750 mm (30") track and 25 kW generator, full fuel tank, and operator.

Operating Specifications

Max. Reach	18 m	59 ft
Cat Cab Riser	1.96 m	6 ft 6 in

345C MH Material Handler

The Cat 345C Material Handler is specifically designed for the scrap and material handling customer.

345C MH Two-piece Fronts by Caterpillar®

The two-piece fronts meet your material handling needs with excellent lift performance and working range whether operating in close or at full reach. Built for strong performance and long service life. **pg. 4**

C13 Engine with ACERT Technology

- ✓ ACERT Technology works at the point of combustion to optimize engine performance and provide low exhaust emissions to meet U.S. EPA Tier 3 emission regulations, with exceptional performance capabilities and proven reliability. **pg. 5**

Structures

The 345C MH structural components are the backbone of the machine's durability. **pg. 6**

Serviceability

Simplified service and maintenance features save you time and money. **pg. 10**

Complete Customer Support

Cat Dealer services help you operate longer with lower costs. **pg. 11**

This machine uses the most sophisticated manufacturing technology to ensure the highest level of manufacturing quality. This quality, along with Cat design standards, means that 345C Material Handler will deliver the reliability and productivity you demand from Caterpillar.



Cat Material Handler Hydraulic Systems

The 345C MH hydraulic system is designed to handle the specific requirements of the Material Handling Industry. **pg. 7**

Work Tools

Orange Peel Grapples and Walker magnets are offered to maximize performance of the 345C Material Handler. **pg. 8**

Additional Features

The 345C MH has been designed with many benefit adding features to enhance the machine's performance in material handling applications. **pg. 9**



✓ *New Feature*

345C MH Two-piece Fronts by Caterpillar

The two-piece fronts meet your material handling needs with excellent lift performance and working range whether operating in close or at full reach. Built for strong performance and long service life.



Stick Options. The 345C Material Handler is available with a choice of two different stick lengths. The 7.3 m (24'3") material handling stick which gives a 16.5 m (54'2") max-reach front linkage and the 9.1 m (29'10") material handling stick which gives a 18 m (59'0") max-reach front linkage.

Stress Relieving Booms and Sticks. Built to maximize strength and minimize structure weight.

Efficient Design of Welded Box-section Structures. The design with thick, multi-plate fabrications in high stress areas allows structures to flex, dissipating stresses and maximizing strength.

C13 Engine with ACERT Technology

Built for power, reliability, economy and low emissions.

Performance. The C13 with ACERT Technology offers 21% greater displacement than the 3176C, and runs at 10% lower speeds for better fuel economy and reduced wear. The 345C MH, equipped with a C13 engine, provides 8% more horsepower compared to the 3176C in the 345B Series II MH.

Fuel Consumption. With ACERT Technology, the C13 engine meets U.S. EPA Tier 3 emissions regulations while delivering good fuel economy.

Emissions. ACERT Technology is a differentiated technology that reduces emissions at the point of combustion. The technology capitalizes on Caterpillar's proven leadership in three core engine systems: fuel, air and electronics.

Low Sound and Vibration Levels.

The engine mounts are rubber-isolating mounts matched with the engine package to provide optimum sound and vibration reduction. Another benefit of ACERT Technology, the C13 engine can shape the rate of fuel injection, a process that reduces engine noise levels and vibration.

Fuel Systems. The Cat C13 engine features electronic controls that govern the mechanically actuated unit fuel injection (MEUI) system. MEUI provides the high-pressure required to help reduce particulate emissions and deliver better fuel economy through finer fuel atomization and more complete combustion.

Cooling Systems. Standard screens at the radiator inlet along with an optional automatic reversing fan keep the radiator and oil cooler clean in dirty scrap yard environments to ensure optimum cooling performance.



Air Cleaner. The radial seal air filter features a double-layered filter core for more efficient filtration and is located in a compartment behind the cab. A warning is displayed on the monitor when dust accumulates above a preset level.

Turbocharger. The Cat C13 engine uses a Wastegate Turbocharger for improved performance. This turbocharger controls the air volume to the cylinders and works efficiently during low and high load conditions.

Cold Weather Start. Starting package consists of four batteries, heavy-duty harness, large capacity starting motor and the ether starting aid. With this standard feature, the 345C MH has the capability to start at -32°C (-25.6°F).

Structures

The 345C MH structural components are the backbone of the machine's durability.



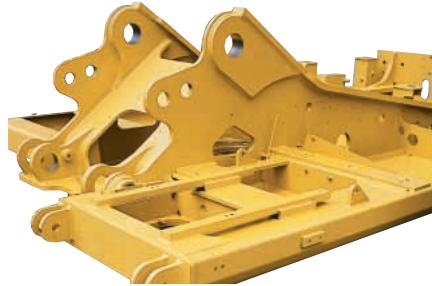
Advanced Carbody Design. Advanced carbody design stands up to the toughest applications.

- Modified X-shaped box-section carbody provides excellent resistance to torsional bending.
- Upper structure weight and stresses are distributed evenly across the full length of the track roller frame.
- Track roller frames may be extended to provide 4470 mm (14'8") overall width with 750 mm (30") track shoes. Track frames are bolted to the carbody and may be removed for shipping.
- Robotic welding helps ensure consistent, high-quality welds throughout the manufacturing process.

Thicker Carbody Plates. Thicker carbody plates and increased box-section height provide increased weight and load capacities.

Robot-welded Track Roller Frames.

Press-formed, pentagonal units deliver exceptional strength and service life.



Upper Frame. Is specifically designed for the scrap and material handling market. It is built of higher strength material and thicker steel sections to handle the increased swing loads developed with the longer fronts and heavier counterweights used in material handling.

- Boom tower doubler plates add reinforcement for increased side loads and payloads.
- Box-section reinforcement of the cab outrigger frames support cab risers.
- Box-section cylinder mounts help handle increased torsional loads and payloads.
- Horizontal mounting plates provide more surface area for swing drive and swing bearing mounting bolts to handle increased loads and movement.

- Outer frame utilizes curved side rails, which are die-formed, for excellent uniformity and strength throughout the length.
- Inverted U-channels span the width of the main frame and are formed, rather than fabricated, for superior strength and reduced weight.
- Boom foot and engine mount areas are reinforced for additional strength.
- Sheet metal supporting structure is improved by integrating the mounting into upper frame structure.



Cat Material Handler Hydraulic Systems

The 345C MH hydraulic system is designed to handle the specific requirements of the Material Handling Industry.



Material Handler Hydraulics.

Specifically designed to meet your hydraulic attachment requirements, the grapple open/close circuit works with the other implement circuits to deliver smooth, simultaneous, multi-function control. The rotate circuit provides a separate 43 L/min (11 gpm) gear pump and fully adjustable control valve, which allows this configuration to meet various grapple manufacturer's flow requirements. A separate fixed displacement gear pump is used to provide the hydraulic power to run a 25 kW generator system.

Caterpillar 25 kW Solid State Generator Set.

Powers magnets up to 1829 mm (72 in) in diameter. A Caterpillar state-of-the-art electronic magnet controller and generator are linked to provide trouble free service. The new controller completely eliminates traditional contactor maintenance and it is supported and warranted through your Cat dealer.



Right Front Corner Genset. The generator is now mounted on the right front corner of the machine upper to improve serviceability.

Work Tools

Orange Peel Grapples and Walker magnets are offered to maximize performance of the 345C Material Handler.

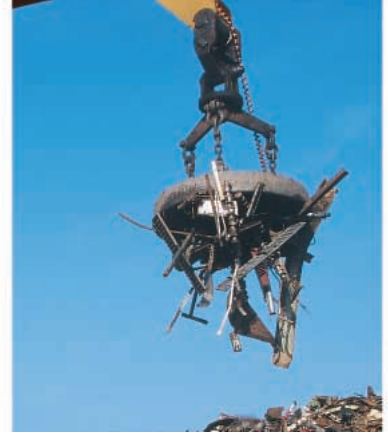


Orange Peel Grapples. The 1.5 yd³ (1.15 m³) and the 2.0 yd³ (1.53 m³) Orange Peel Grapples are available attachments.

Work Tool Recommendations.

The 1.5 yd³ (1.15 m³) grapple is recommended for the 18 m (59'0") Material Handler front and the 2.0 yd³ (1.53 m³) grapple is recommended for the 16.5 m (54'2") Material Handler front.

Work Tool Selection. When choosing a work tool, please consider the work tool application, the variation of the density of the material to be handled and productivity requirements. Check with your Cat Dealer for more details on specifications, sizes and other work tool types.



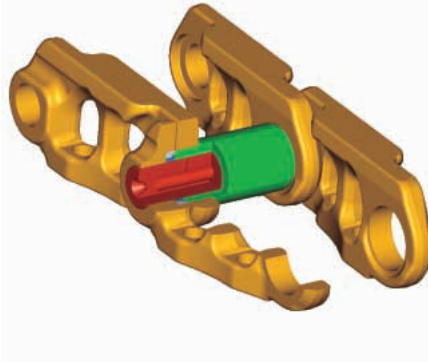
Walker Scrapmaster Series Scrap Handling Magnet. 1829 mm (72") diameter, cast steel case, alloy steel suspension chain. For use with Cat 16.5 m (54'2") MH front.

Additional Features

The 345C MH has been designed with many benefit adding features to enhance the machine's performance in material handling applications.



A New Cab Mounted Magnet System Monitor/Control. Provides system information to the operator through a series of indicators, lights and a rotary selector switch. The indicator lights provide the following information. Magnet "On": Magnet is turned on. Generator "Hot": Generator is overheated and must be cooled down. The generator should be run under "no load" until the indicator turns off. Voltage Fault: Voltage too high or too low. May indicate service is required. Ground Fault: The magnet, generator or cable is grounded. Service is required. Over 75% Duty Cycle: The "magnet on" time exceeds 7.5 minutes in a ten minute time frame indicating the operator technique needs to be adjusted.



Sealed Greased Track. The 345C MH comes standard with the new grease lubricated track called GLT4. The track links are assembled and sealed with grease to decrease internal bushing wear, reduce travel noise and extend service life lowering operating costs.



Wide 3720 mm (12'2") Track Gauge. Provides the over-the-side stability required to handle heavy loads and improve productivity. Carbody plates are 5 mm thicker than standard, high strength swing bearing bolts plus larger box-section height team up to provide superior joint retention and durability in material handling applications.



Caterpillar Designed and Built, 1.9 m (6'5") Cab Riser. The cab riser gets your operator to an operating height with excellent visibility for loading or unloading your processing equipment, trucks and rail cars. Access to the cab is provided by a platform which extends around the riser to allow windshield cleaning. The cab riser can also be manually tilted forward 90° for shipping.

Rotary Selector Switch. Allows the operator to optimize the magnet performance for different grades of scrap from within the cab.

Serviceability

Simplified service and maintenance features save you time and money.



Faster, Easier Maintenance. This means improved uptime and a better value.

More Ground Level Service Points.

There are more ground level service points for fuel-water separator, engine oil filter, battery, radiator fluid level, window washer fluid level and pilot system filter.

Improved Filters and Filter Locations.

The improved filters and filter locations make maintenance easier. Two hydraulic capsule filters are mounted outside hydraulic tank. New design avoids spills and contamination during replacement. Indicator in cab signals when the filter needs to be replaced, extending filter service life. Radial seal air cleaner has

double layered filter core for better filtration. No tools required to change. Operator is alerted to clogs. Engine oil filter is located in the pump compartment for easy access. Filter opening faces up to avoid spills during changes. Pilot hydraulic system filter keeps contaminants away from the pilot system. This system includes a Scheduled Oil Sampling port to simplify sampling. Swing and travel motor case drain filter removes contaminants, keeping them from returning to the tank.

Easy Clean-out Engine and Hydraulic Cooling Cores. Are provided for operating in debris-laden environments. The oil cooler and condenser slide outboard, providing ample space between the oil cooler and radiator cores for easy and efficient cleaning.

Water Separator. The water separator removes water from fuel even when under pressure and is located in the radiator compartment for easy access.

Remote Greasing Block. The remote greasing block on the boom and stick and two grease points for the swing bearing deliver grease to hard to reach locations.

Electronic Power Unit Control.

The electronic power unit control has diagnostic capabilities for Cat Dealer's use.

- Dealer service technicians can quickly and easily diagnose and adjust machine components, maximizing uptime.

Complete Customer Support

Cat Dealer services help you operate longer with lower costs.

Customer Support Agreements.

Cat Dealers offer a wide range of services under a customer support agreement when equipment is purchased. The dealer will help choose a plan that can cover everything from machine and attachment selection to replacement for the best return on your investment.

Selection. Make detailed comparisons of the machine being considered before a purchase. How long do components last? What is the cost of preventative maintenance? What is the true cost of lost production? Your Cat Dealer can give precise answers to these questions.

Purchase. Look past initial price. Consider the financing options available as well as day-to-day operating costs. This is also the time to look at dealer services that can be included in the cost of the machine to yield lower equipment owning and operating costs over the long run.

Maintenance. Choose from a wide range of maintenance services at the time you purchase a machine. Repair option programs guarantee the cost of repairs up front. Diagnostic programs such as Scheduled Oil Sampling and Technical Analysis help you avoid unscheduled repairs.

Replacement. Repair, rebuild or replace? Your Cat Dealer can help you evaluate the cost involved so you can make the right choice.



Product Support. Cat Dealers utilize a world-wide computer network to find in-stock parts to minimize machine down time. Save money with remanufactured parts. Receive the same warranty and reliability as new products at cost savings of 40 to 70 percent.

Engine

Engine Model	Cat C13 ACERT	
Net Flywheel Power	257 kW	345 hp
Net Power – ISO 9249	257 kW	345 hp
Net Power – SAE J1349	257 kW	345 hp
Net Power – EEC 80/1269	257 kW	345 hp
Bore	130 mm	5.1 in
Stroke	157 mm	6.2 in
Displacement	12.5 L	763 in ³

- The 345C MH meets U.S. Tier 3 and EU Stage III exhaust emissions requirements.
- Net power advertised is the power available at the flywheel when the engine is equipped with fan, air cleaner, muffler, and alternator.
- No engine derating needed up to 2300 m (7,500 ft).

Operating Specifications

Max. Reach	18 m	59 ft
Cat Cab Riser	1.96 m	6 ft 6 in
Generator Set	25 kW	33.5 hp

Hydraulic System

Maximum Flow (each of two pumps)	360 L/min	95 gal/min
Max. Pressure Implements	34 350 kPa	4,982 psi
Max. Pressure Travel	34 350 kPa	4,982 psi
Max. Pressure Swing	31 400 kPa	4,554 psi
Pilot System Max. Flow	43 L/min	11.36 gal/min
Pilot System Max. Pressure	4110 kPa	596 psi
Rotate Circuit for Grapple Max. Flow	41.6 L/min	11 gal/min
Rotate Circuit for Grapple Max. Pressure	27 579 kPa	4,000 psi
Generator Auxiliary Pump Max. Flow	163 L/min	43 gal/min
Generator Auxiliary Pump Max. Pressure	27 579 kPa	4,000 psi

- Two, variable-displacement, axial-piston pumps power the boom, stick, grapple swing and travel circuits.
- Snubbers at the rod ends of the boom cylinders and at both ends of the stick cylinders.

Weights

Operating Weight	57 431 kg	126,615 lb
Upper	15 595 kg	34,390 lb
Counterweight	12 000 kg	26,455 lb
Undercarriage (includes carbody)	21 180 kg	46,690 lb
Two-Piece Front (with cylinders)	8655 kg	19,080 lb

- All weights shown are for machines equipped with 750 mm (30") track and 25 kW generator, full fuel tank, and operator.

Dimensions

Operating Height – to Top of Cab	5428 mm	17 ft 10 in
Shipping Height – Cab Tipped	3618 mm	11 ft 10 in
Operating Width	4470 mm	14 ft 8 in
Shipping Width	3970 mm	13 ft
Shipping Length	13 861 mm	45 ft 6 in
Tail Swing Radius	3763 mm	12 ft 4 in
Ground Clearance	743 mm	2 ft 5 in
Height to Top of Exhaust	3604 mm	11 ft 10 in
Counterweight Clearance	1474 mm	4 ft 10 in

Swing Mechanism

Swing Torque	149 kN·m	109,900 lb ft
Swing Speed	8.6 rpm	

- The swing mechanism is driven by a pinion gear sealed in a grease bath through a double-reduction planetary gear set.

Track

Track Shoes	750 mm	30 in
Ground Clearance	740 mm	29 in
Gauge	3720 mm	146 in
Shoes (each side)	52	
Rollers (each side)	9	
Overall Track Length	5360 mm	17 ft 8 in

- Robot-welded, pentagonal track roller frames with hydraulic adjusters.
- Sealed and lubricated rollers and idlers.
- Sealer track with triple grouser shoes.

Service Refill Capacities

Fuel Tank	705 L	186 gal
Cooling System	61 L	16 gal
Engine Oil	42 L	11.6 gal
Swing Drive	10 L	2.6 gal
Final Drive (each)	15 L	4 gal
Hydraulic System (including tank)	570 L	150 gal
Hydraulic Tank	243 L	64 gal

Drive

Maximum Drawbar Pull	331 kN	74,380 lb
Maximum Travel Speed	4.4 km/h	2.7 mph

- Each track is driven by one independent, automatic shifting, two-speed slipper type piston hydraulic motor via integral planetary final drives.
- Multiple disc brakes have increased braking capacity, are spring-engaged and pressure released.
- Each drive module is well integrated into the roller frame for total protection.

Cab

Cab Standards	Optional operator protection guards meeting SAE J1356 and ISO 3449.
---------------	---

- Some applications and/or attachments may require additional cab guarding. Please contact your Caterpillar dealer for further information.
- NOTE: When properly installed, maintained, and tested with doors and windows closed according to ANSI/SAE J1166 MAY90, the cab offered by Caterpillar meets OSHA and MSHA requirements for operator sound exposure limits at time of manufacture.

Brakes

Brake Standards	Meets the following standards: SAE J1026 APR90
-----------------	--

SERVICE BRAKE FEATURES

- Two wet, multiple-disc brakes are used on the final drive input shafts.
- Spring-applied, hydraulically released.

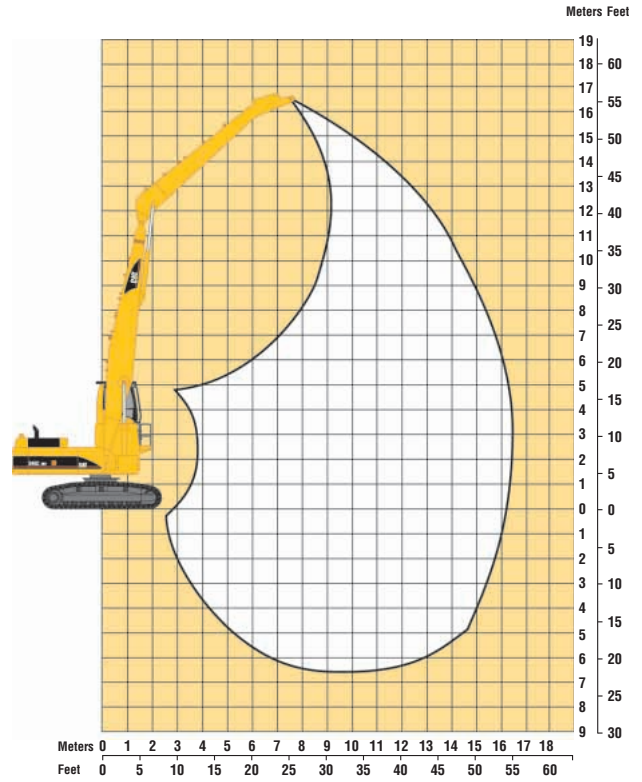
PARKING BRAKE FEATURES

- Wet, multiple-disc brakes.
- Spring applied, hydraulically released.

Working Ranges

Machine equipped with 16.5 m (54'2") front linkage.

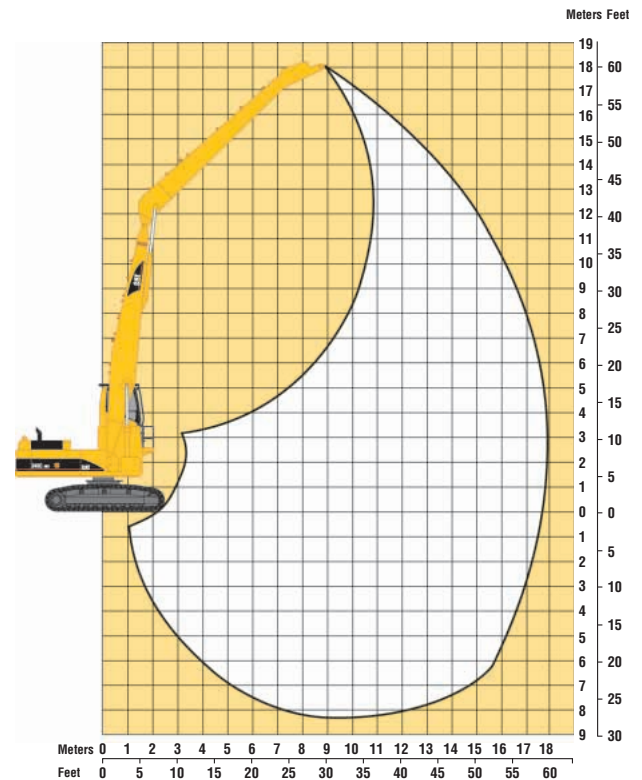
Maximum reach	16.5 m	54'2"
Maximum height	16.9 m	55'6"



Working Ranges

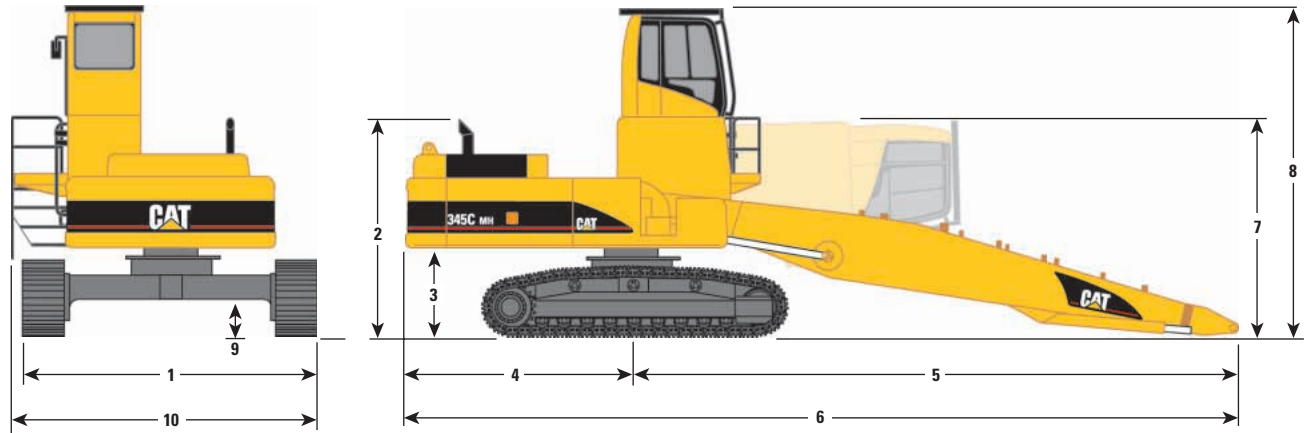
Machine equipped with 18.0 m (59'1") front linkage.

Maximum reach	18.0 m	59'1"
Maximum height	18.0 m	59'1"



Dimensions

All dimensions are approximate.



1 Shipping Width	3970 mm (13'0")
2 Height to Top of Exhaust	3604 mm (11'10")
3 Counterweight Clearance	1474 mm (4'10")
4 Tail Swing Radius	3763 mm (12'4")
5 Swing Center to End of Boom	10 098 mm (33'2")
6 Rear of Carrier to End of Boom	13 861 mm (45'6")
7 Shipping Height – cab tipped	3618 mm (11'10")
8 Operating Height – to top of cab with FOGS	5471 mm (18'0")
9 Ground Clearance	743 mm (2'5")
10 Operating Width	4470 mm (14'8")

Lift Capacities

345C MH with 750 mm Track

BOOM – 9.9 m (32'6")
STICK – 9.1 m (29'10")

MAX REACH – 18 m (59'1")
MAX HEIGHT – 18 m (59'1")

Lift Point Height	4.5 m/15.0 ft		6.0 m/20.0 ft		7.5 m/25.0 ft		9.0 m/30.0 ft		10.5 m/35.0 ft		12.0 m/40.0 ft		13.5 m/45.0 ft		15.0 m/50.0 ft		16.5 m/55.0 ft		18.0 m/60.0 ft		Maximum Reach					
	Over Front	Over Side	Over Front	Over Side	Over Front	Over Side	Over Front	Over Side	Over Front	Over Side	Over Front	Over Side	Over Front	Over Side	Over Front	Over Side	Over Front	Over Side	Over Front	Over Side	Over Front	Over Side	m	ft		
16.5 m 55.0 ft	kg lb									*6600 *14,400	*6600 *14,400												*5800 *12,700	*5800 *12,700	11.1 35.2	
15.0 m 50.0 ft	kg lb									*8000 *17,500	*8000 *17,500	*6500 *14,200	*6500 *14,200										*5300 *11,700	*5300 *11,700	12.8 41.2	
13.5 m 45.0 ft	kg lb											*7700 *17,000	*7700 *17,000	*6100 *13,300	*6100 *13,300								*5000 *11,100	*5000 *11,100	14.1 45.8	
12.0 m 40.0 ft	kg lb											*8100 *17,800	*8100 *17,800	*7300 *16,100	*7300 *16,100	*5300 *11,600	*5300 *11,600						*4900 *10,700	*4900 *10,700	15.2 49.5	
10.5 m 35.0 ft	kg lb											*8100 *17,900	*8100 *17,900	*7600 *16,600	*7600 *16,600	*6600 *14,500	*6600 *14,500						*4800 *10,500	*4800 *10,500	16.1 52.5	
9.0 m 30.0 ft	kg lb									*9000 *19,700	*9000 *19,700	*8200 *18,100	*8200 *18,100	*7600 *16,700	*7600 *16,700	*7000 *15,500	6600 14,400	*5300 *11,600	*5300 *11,600				*4700 *10,400	*4700 *10,400	16.8 54.8	
7.5 m 25.0 ft	kg lb									*9200 *20,300	*9200 *20,300	*8400 *18,500	*8400 *18,500	*7700 *17,000	*7700 *17,000	*7100 *15,600	6500 14,200	6300 13,500	5400 12,000				*4700 *10,400	*4700 *10,400	17.3 56.6	
6.0 m 20.0 ft	kg lb									*10,700 *23,600	*10,700 *23,600	*9600 *21,100	*9600 *21,100	*8600 *19,000	*8600 *19,000	*7800 *17,200	7600 16,700	*7100 *15,700	6400 14,000	6200 13,300	5400 11,800			*4800 *10,500	*4700 *10,400	17.7 57.9
4.5 m 15.0 ft	kg lb					*13,200 *29,100	*13,200 *29,100	*11,400 *25,000	*11,400 *25,000	*10,000 *21,900	*10,000 *21,900	*8900 *19,500	*8900 *19,500	*8000 *17,500	7400 16,200	7200 15,800	6200 13,700	6100 13,100	5300 11,700				*4900 *10,700	4500 10,000	17.9 58.7	
3.0 m 10.0 ft	kg lb	*23,400 *51,500	*23,400 *51,500	*17,600 *38,800	*17,600 *38,800	*14,200 *31,300	*14,200 *31,300	*12,000 *26,300	*12,000 *26,300	*10,300 *22,700	*10,300 *22,700	*9100 *20,000	8600 18,900	*8100 *17,800	7200 15,700	7000 15,400	6000 13,300	6000 12,900	5200 11,400	*5100 *11,200	4400 9800		*5000 *11,000	4400 9800	18 59.2	
1.5 m 5.0 ft	kg lb	*23,600 *51,800	*23,600 *51,800	*19,100 *42,000	*19,100 *42,000	*15,100 *33,100	*15,100 *33,100	*12,400 *27,400	*12,400 *27,400	*10,600 *23,300	10,100 22,100	*9200 *20,300	8300 18,200	8000 17,700	6900 15,200	6800 15,000	5900 12,900	5900 12,700	5100 11,100	5100 11,300	4400 9600		*5100 *11,300	4400 9600	18 59.1	
0.0 m 0.0 ft	kg lb	*8900 *19,500	*8900 *19,500	*19,700 *43,400	*19,700 *43,400	*15,500 *34,100	*15,500 *34,100	*12,700 *27,900	12,000 26,400	*10,700 *23,600	9600 21,200	*9200 *20,300	8000 17,500	7800 16,800	6700 14,700	6700 14,700	5700 12,600	5800 12,400	5000 10,900				*5100 *11,300	4400 9600	17.9 58.7	
-1.5 m -5.0 ft	kg lb	*7100 *15,600	*7100 *15,600	*14,200 *31,200	*14,200 *31,200	*15,400 *33,900	14,800 32,500	*12,600 *28,700	11,500 25,300	*10,600 *23,400	9300 20,400	9000 19,800	7700 16,900	7600 16,800	6500 14,300	6600 14,400	5700 12,300	5700 12,300	4900 10,700				*4900 *10,700	4400 9700	17.6 57.8	
-3.0 m -10.0 ft	kg lb	*7000 *15,400	*7000 *15,400	*11,700 *25,700	*11,700 *25,700	*14,800 *32,500	14,300 31,400	*12,200 *26,800	11,100 24,400	*10,300 *22,600	9000 19,800	*8800 *19,300	7500 16,500	7,500 16,400	6400 14,000	*6400 *14,000	5500 12,100	*5200 *11,500	4800 10,600				*4600 *10,100	4500 10,000	17.2 56.4	
-4.5 m -15.0 ft	kg lb	*7300 *16,100	*7300 *16,100	*11,000 *24,300	*11,000 *24,300	*13,600 *30,000	*13,600 *30,000	*11,400 *25,000	10,900 23,900	*9600 *21,100	8800 19,400	*8100 *17,900	7400 16,200	*6900 *15,100	6300 13,800	*5700 *12,500	5500 12,000	*4400 *9600	*4400 *9600				*4200 *9200	*4200 *9200	16.7 54.6	
-6.0 m -20.0 ft	kg lb	*7800 *17,200	*7800 *17,200	*11,100 *24,400	*11,100 *24,400	*11,900 *26,300	*11,900 *26,300	*10,100 *22,200	*10,100 *22,200	*8500 *18,700	*8500 *18,700	*7200 *15,600	*7200 *15,600	*5900 *13,000	*5900 *13,000	*4700 *10,200	*4700 *10,200						*3700 *8100	*3700 *8100	16 52.2	
-7.5 m -25.0 ft	kg lb			*11,200 *24,600	*11,200 *24,600	*9700 *21,300	*9700 *21,300	*8300 *18,200	*8300 *18,200	*7000 *15,400	*7000 *15,400	*5800 *12,700	*5800 *12,700	*4600 *10,000	*4600 *10,000											

* Indicates that the load is limited by hydraulic capacity rather than tipping capacity. Rated loads do not exceed 87% of hydraulic lifting capacity or 75% of tipping capacity.

Lift Capacities

345C MH with 750 mm Track

BOOM – 9.9 m (32'6")
STICK – 7.4 m (24'3")

MAX REACH – 16.5 m (54'2")
MAX HEIGHT – 16.9 m (55'6")

Lift Point Height	4.5 m/15.0 ft		6.0 m/20.0 ft		7.5 m/25.0 ft		9.0 m/30.0 ft		10.5 m/35.0 ft		12.0 m/40.0 ft		13.5 m/45.0 ft		15.0 m/50.0 ft		Maximum Reach				
	Over Front	Over Side	Over Front	Over Side	Over Front	Over Side	Over Front	Over Side	Over Front	Over Side	Over Front	Over Side	Over Front	Over Side	Over Front	Over Side	Over Front	Over Side	m	ft	
16.5 m 55.0 ft	kg																		*7900	*7900	8.3
	lb																		*17,500	*17,500	25.6
15.0 m 50.0 ft	kg							*9400	*9400										*7100	*7100	10.5
	lb							*20,600	*20,600										*15,500	*15,500	33.4
13.5 m 45.0 ft	kg									*9300	*9300	*6800	*6800						*6600	*6600	12.1
	lb									*20,400	*20,400	*14,900	*14,900						*14,500	*14,500	39
12.0 m 40.0 ft	kg									*9600	*9600	*8900	*8900						*6300	*6300	13.3
	lb									*21,200	*21,200	*19,500	*19,500						*13,900	*13,900	43.3
10.5 m 35.0 ft	kg									*9700	*9700	*8900	*8900	*8000	7600				*6200	*6200	14.3
	lb									*21,300	*21,300	*19,500	*19,500	*17,700	16,800				*13,500	*13,500	46.6
9.0 m 30.0 ft	kg							*10 900	*10 900	*9800	*9800	*8900	*8900	*8100	7600	*6300	*6300		*6100	*6100	15.1
	lb							*24,000	*24,000	*21,600	*21,600	*19,600	*19,600	*17,900	16,700	*13,900	*13,900		*13,400	*13,400	49.2
7.5 m 25.0 ft	kg							*11 300	*11 300	*10 100	*10 100	*9100	*9100	*8200	7500	7200	6300		*6100	5800	15.7
	lb							*24,900	*24,900	*22,100	*22,100	*19,900	*19,900	*18,000	16,500	15,900	13,800		*13,400	12,800	51.2
6.0 m 20.0 ft	kg					*13 800	*13 800	*11 800	*11 800	*10 400	*10 400	*9200	8900	*8300	7400	7100	6200		*6200	5500	16.1
	lb					*30,300	*30,300	*26,000	*26,000	*22,800	*22,800	*20,300	19,500	*18,200	16,200	15,700	13,600		*13,600	12,100	52.7
4.5 m 15.0 ft	kg	*24 100	*24 100	*18 200	*18 200	*14 700	*14 700	*12 300	*12 300	*10 700	10 600	*9400	8600	8300	7200	7000	6100		6100	5300	16.3
	lb	*53,100	*53,100	*39,900	*39,900	*32,200	*32,200	*27,100	*27,100	*23,400	23,200	*20,600	19,000	18,200	15,800	15,500	13,400		13,500	11,600	53.6
3.0 m 10.0 ft	kg	*16 800	*16 800	*19 500	*19 500	*15 400	*15 400	*12 800	12 700	*10 900	10 200	*9500	8300	8100	7000	6900	6000		6000	5100	16.5
	lb	*37,000	*37,000	*42,900	*42,900	*33,900	*33,900	*28,100	27,900	*24,000	22,300	*20,800	18,400	17,800	15,400	15,200	13,100		13,200	11,300	54
1.5 m 5.0 ft	kg	*6700	*6700	*20 100	*20 100	*15 800	15 700	*13 000	12 100	*11 000	9800	9400	8100	7900	6800	6800	5800		5900	5100	16.5
	lb	*14,500	*14,500	*44,300	*44,300	*34,800	34,500	*28,600	26,700	*24,200	21,500	20,600	17,800	17,400	15,000	14,900	13,000		13,000	11,200	54
0.0 m 0.0 ft	kg	*5700	*5700	*12 600	*12 600	*15 700	15 000	*12 900	11 700	*10 900	9500	9200	7900	7800	6700	6700	5700		*5700	5100	16.3
	lb	*12,600	*12,600	*27,700	*27,700	*34,500	33,000	*28,400	25,700	*23,900	20,800	20,100	17,300	17,100	14,700	14,700	12,600		*12,600	11,200	53.5
-1.5 m -5.0 ft	kg	*6100	*6100	*10 800	*10 800	*15 000	14 600	*12 400	11 300	*10 500	9200	*8900	7800	*7600	6500	*6300	5700		*5400	5200	16
	lb	*13,500	*13,500	*23,800	*23,800	*33,000	32,000	*27,300	24,900	*23,000	20,300	*19,600	16,900	*16,700	14,400	*14,000	12,500		*11,800	11,400	52.5
-3.0 m -10.0 ft	kg	*6900	*6900	*10 600	*10 600	*13 800	*13 800	*11 500	11 100	*9800	9100	*8300	7600	*6900	6500	*5600	*5600		*4900	*4900	15.6
	lb	*15,200	*15,200	*23,400	*23,400	*30,300	*30,300	*25,400	24,500	*21,500	19,900	*18,200	16,700	*15,200	14,200	*12,200	*12,200		*10,900	*10,900	51.1
-4.5 m -15.0 ft	kg			*11 100	*11 100	*12 000	*12 000	*10 200	*10 200	*8600	*8600	*7300	*7300	*5900					*4400	*4400	15
	lb			*24,400	*24,400	*26,300	*26,300	*22,400	*22,400	*19,000	*19,000	*16,000	*16,000	*13,000					*9600	*9600	49
-6.0 m -20.0 ft	kg					*9600	*9600	*8300	*8300	*7100	*7100	*5800	*5800								
	lb					*21,100	*21,100	*18,400	*18,400	*15,600	*15,600	*12,800	*12,800								

* Indicates that the load is limited by hydraulic capacity rather than tipping capacity. Rated loads do not exceed 87% of hydraulic lifting capacity or 75% of tipping capacity.

Standard Equipment

Standard equipment may vary. Consult your Caterpillar dealer for details.

STICK AND BOOM

32'6" piece MH Boom. Includes high pressure tig welded steel tubes.

ELECTRICAL

75 Ampere alternator

Base machine light (frame)

Lights, cab mounted (two)

Horn – signal warning

Lights, boom and stick (four)

OPERATOR ENVIRONMENT

Polycarbonate windows except laminated glass in retractable front windshield, 70/30 tempered glass in removable lower windshield and sliding upper door window

Seat, suspension with high backseat with headrest, adjustable arm rest and retractable cloth seat belt

Monitor

Full graphic color display

Start up level check for hydraulic and engine oil and engine coolant

Working hour information

Machine condition, error code and tool mode setting information

AM/FM radio with two stereo speakers (includes antennae) and one 24V to 12V converter

Openable polycarbonate skylight with sunshade

Windshield wiper/washers (upper/lower)

Positive filtered ventilation

Air conditioner with auto climate control and defroster

Instrument panel and gauges

Hydraulic filter warning light

Interior lighting

Coat hook

Ashtray with lighter

Literature compartment

Storage compartment suitable for lunch box

Neutral lever for all controls

Joysticks, pilot operated, adjustable with integral electrical switches for operation of grapple rotate and magnet lift drop

Toggle switch in RH console to switch between magnet and grapple operation

Travel control pedals with removable hand levers

Floor mat

Beverage holder

Bolt on FOGS capacity

Rear window exit

POWER TRAIN

Cat C-13 Diesel engine with 24-volt electric starting

Emission package to meet Tier 3

Automatic engine speed control with manual return to idle

Water separator in fuel line

Water level indicator

S•O•S sampling for engine and hydraulic systems

Two speed auto-shift travel

Dual element radiator with slide out ATAAC & oil cooler

Variable-speed cooling fan

Muffler

Fuel filter

UNDERCARRIAGE

Wide carbody with swivel guard

Hydraulic track adjusters

Track-type sealed undercarriage

Idler and center section track guiding guards

750 mm (30") triple grouser shoes (52 sections)

Grease lubricated track

Heavy duty track motor guards

HYDRAULIC SYSTEMS

Fully pressurized hydraulic system

Auxiliary pump and lines to drive generator

Medium pressure auxiliary hydraulic circuit for powering rotating grapples (includes pump, valves and lines)

High pressure grapple open close hydraulic circuit

OTHER STANDARD EQUIPMENT

Heavy duty upper frame with bottom guards

Door locks, cap locks and Caterpillar one-key security system

Mirrors (frame-right, cab-left)

12 000 kg (26,455 lb) MH counterweight

Automatic swing parking brake

Fine swing

Travel alarm

Cold weather starting aids

Sun screen

Product Link ready

Universal crosshead adapter for mounting magnets or grapples

Optional Equipment

Optional equipment may vary. Consult your Caterpillar dealer for details.

Guard, Falling Objects

Fan, hydraulic, auto reversing

25 kW hydraulic driven solid state generator

Magnet, Walker 1829 mm (72")

Scrapmaster Magnet for 16.5 m (54'2") front

Grapple, four tine, Orange Peel

2.0 yd³ (1.53 m³) for 7.3 m (24'3") MH stick

1.5 yd³ (1.15 m³) for 9.1 m (29'10") MH stick

Rear window exit with internal and external opening latch

NOTE: This is mandatory in the province of British Columbia

One of two stick options **MUST** be chosen

Stick, 7.3 m (24'3") Material Handling for 16.5 m (54'2") front

Stick, 9.1 m (29'10") Material Handling for 18 m (59'0") front

345C MH Material Handler

For more complete information on Cat products, dealer services,
and industry solutions, visit us on the web at www.cat.com

© 2005 Caterpillar
All Rights Reserved
Printed in U.S.A.

Materials and specifications are subject to change without notice.
Featured machines in photos may include additional equipment.
See your Caterpillar dealer for available options.

AEHQ5637 (3-05)

CATERPILLAR[®]