

527 Skidder

CAT[®]



Featured machine may include additional equipment applicable only for special applications. See your Caterpillar[®] dealer for available options.

3304 DITA Engine

Gross Power	124 kW	166 hp
Flywheel	112 kW	150 hp
Operating Weight	21 477 kg	47,250 lbs

527 Skidder

The 527 Skidder is designed to maximize skidding performance, reliability and ease of operation with the customer in mind.

Power Train

The field proven Cat® 3304 DITA diesel engine, heavy-duty torque converter and three-speed transmission are matched to deliver high horsepower for more rimpull, improved skidding performance and ease of operation.

Load-Sensing Hydraulic System

The load sensing hydraulic system reduces horsepower consumption and system heat. A single lever controls grapple and tong hydraulics, reducing operator efforts for improved productivity. Exclusive Auto-Grab hydraulics maintain constant tong gripping pressures to compensate for shifting loads.

Engine

Four-stroke cycle, four cylinder 3304 DITA diesel engine.

Ratings at 2200 rpm*	kW	hp
Gross power	124	166
Net power	112	150

Dimensions

Bore	120.65 mm	4.75 in
Stroke	152.4 mm	6.0 in
Displacement	7.0 L	425 in ³

Electrical System

24-volt

Features

- two, 12-volt maintenance-free batteries
- 75-amp alternator
- wiring harnesses wrapped with braided, vinyl-coated nylon shielding for maximum protection
- connectors are self-sealing, yet still allow easy service access

Application Flexibility

The 527 Skidder provides unsurpassed performance and application flexibility due to superior balance, torque converter power train and expanded track and grapple/arch options.

Operator Station

Excellent all-around viewing area, angled seat, and easy-to-reach controls reduce operator fatigue and increase productivity.

Operator Station

Enclosed cab is optional

Features

- enclosed cab and open canopy with screens meets operator protective structure criteria for forestry equipment SAE J1084 APR80
- single lever dozer control allows for easy dozer operation
- the seat is angled to the right by ten degrees providing a more comfortable view to grapple/winch operations
- power shift transmission allows for effortless and precise shifting
- single lever control operates all arch/grapple functions

Weight

(approximate)

Operating weight includes: enclosed cab, 5 PAT blade, full fuel tank, swing boom, 10 ft² grapple, and 30" (760 mm) tri-link track

Operating weight 21 477 kg
(47,250 lb)

Undercarriage

Use of D6R sized heavy-duty track prolongs the life of the key undercarriage components, including rollers, idlers, pins, bushings and shoes. An extended track roller frame places more track under grapple/winch loads and enhances balance.

Serviceability/Customer Support

Many convenient service features, including parts availability supported by a worldwide computer network, enhance Caterpillar's total commitment to customer support.

Transmission

Cat three-speed power shift design with heavy-duty torque converter.

Maximum travel speeds

		km/h	mph
Forward	1	3.7	2.3
	2	6.6	4.1
	3	11.5	7.1
Reverse	1	4.6	2.8
	2	8.3	5.1
	3	14.6	9.0

Features

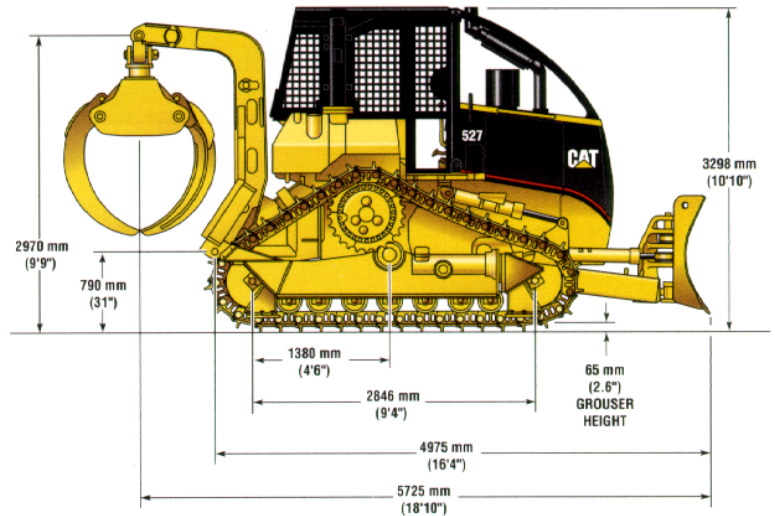
- planetary gear sets within transmission provide additional torque multiplication
- power shift transmission and torque converter reduce the need for gear changing and better match drawbar pull to ground conditions

Arch Configurations

Two arch configurations allow you to effectively match the 527 Skidder to a wide variety of skidding applications.

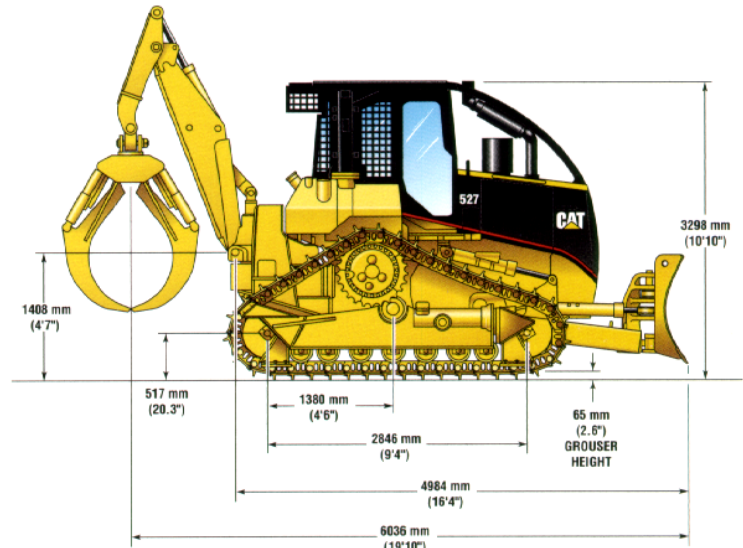
Single-function arch

- versatile attachment suitable for selection and clear cut applications
- reach consists of one vertical arc
- typical application include short cycles and/or larger diameter timber



Swing boom

- excellent reach to the rear and side for maximum skidder versatility
- suitable for hard to reach timber on steep slopes, soft ground, or selection harvest or thinnings
- reduces cycle times by reducing the amount of maneuvering of the skidder to reach logs
- complements the 527 excellent viewing area for outstanding operational ease and comfort
- includes single lever swing boom control



Undercarriage

Undercarriage options provide optimized performance and durability.

Ground contact area with:

560 mm (22") shoes	3.19 m ²	4928 in ²
610 mm (24") shoes	3.47 m ²	5376 in ²
660 mm (26") tri-link	3.76 m ²	5824 in ²
760 mm (30") tri-link	4.34 m ²	6720 in ²

Ground pressure:

560 mm (22") shoes	.67 kg/cm ²	9.05 psi
610 mm (24") shoes	.62 kg/cm ²	8.35 psi
660 mm (26") tri-link	.51 kg/cm ²	8.01 psi
760 mm (30") tri-link	.49 kg/cm ²	7.03 psi

Grapples

Choose from sorting or bunching style tongs.

Sorting Grapple

Capacity		Tong Opening	
m ²	ft ²	mm	in
.84	9.0	2540	100

Bunching Grapple

Capacity		Tong Opening	
m ²	ft ²	mm	in
0.93	10.0	2591	102

527 Skidder

Standard Equipment

Note: Standard equipment may vary. Consult your Caterpillar dealer for specifics.

Air cleaner, with pre-screener	Electronic Monitoring System (EMS)	Lighting system, halogen
Alarm, back-up	Engine enclosures, perforated	three front, four rear
Alternator, 75-amp/24-volt	Ether Starting Aid	Muffler (shielded)
Batteries, two 12-volt	Fuel Priming Pump	Seat, vinyl covered suspension, angled
Brake system; service, parking, and secondary	Gauges:	by ten degrees to the right
Blower fan	Engine coolant temperature	Seat belt
Canopy, Open ROPS with front, side and rear screens and doors	Fuel	Segmented sprocket
Cap locks:	Transmission oil temperature	Steering, clutch and brake
Oil filler	Guards:	Torque converter
Dipstick	Fenders, heavy-duty	Track:
Fuel tank fill	Extreme service crankcase	Adjusters, hydraulic
Fuel tank drain	Fuel tank, heavy-duty	Heavy-duty Sealed and Lubricated track
Hydraulic tank fill	Radiator, heavy-duty punched hole	Two piece master link
Radiator fill	Front brush sweeps	Seven roller track frames
Coolers, dual transmission oil	Pre-screener guard	End guiding guards
Direct electric starting, 24-volt	Heavy Duty Starting Motor	Transmission, power shift with three speeds forward and reverse
	Horn	
	Hydraulics, load sensing	

© 1996 Caterpillar
Printed in U.S.A.

AEHQ9018 (12-96)

Materials and specifications are subject to change without notice.

CATERPILLAR[®]