

**24 Volt 3-phase AC technology
for high performance and
excellent reliability**

**High energy efficiency for
longer run times**

**SpeedControl with rollback
protection on ramps**

**Designed and tested for the
toughest applications**

**Ergonomic design and controls
ensure greater productivity
throughout the entire shift**



ECR 327/336

Electric End Rider Pallet Truck (6000, 8000 lbs.)

The ECR 327/336 electric end rider pallet truck, with a 4 kW, 24 Volt 3-phase AC drive motor, provides superior performance for transport, order picking and dock operations.

Both the AC motor and CAN-Bus system are designed in-house by Jungheinrich engineers, providing optimum performance and greater reliability under the most arduous conditions. Built for heavy use and high loads, the ECR provides hour after hour of productive operation.

In addition, the motor and controller are carefully synchronized to ensure excellent

energy management and maximum efficiency. The ECR is also designed to hold a 750 Ah battery, boosting operating hours and reducing downtime due to charging or battery changes.

Jungheinrich's state-of-the-art impulse controller features "SpeedControl", a real-time travel-speed monitoring system that provides stepless speed control via a motorcycle-style throttle grip and rollback protection on ramps. Travel parameters, including acceleration, speed and motor braking, are easily adjustable. The electro-magnetic brake is applied whenever the drive switch is in neutral, and

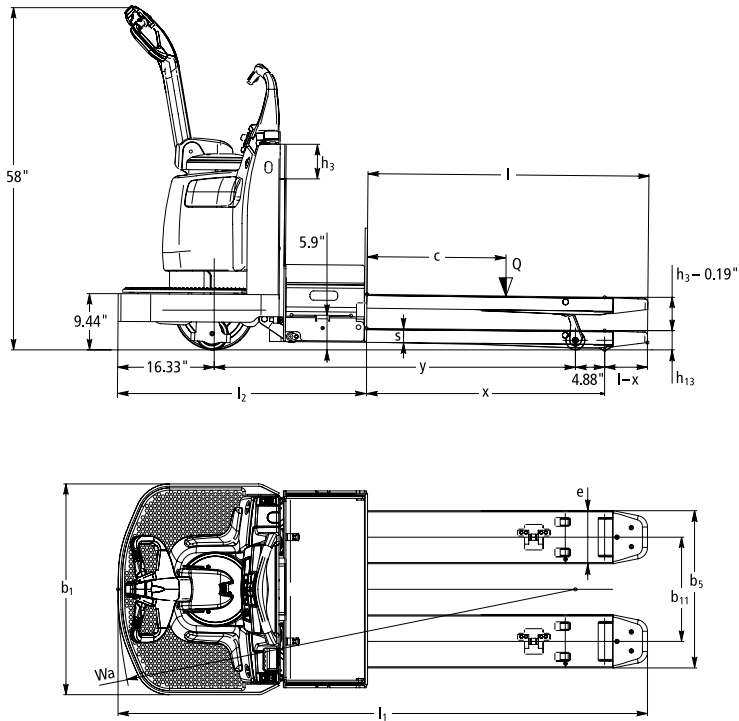
the truck is automatically stopped to ensure that it stays in safe mode.

The truck's solid steel frame is designed from the ground up to handle the harshest applications. Special materials and reinforcements are placed in critical points on the frame to provide maximum durability.

To keep the operator comfortable throughout the work shift, the ECR is also available with an optional spring-loaded, cushioned platform. The tiller arm is padded, and optional knee pads ensure a stable yet comfortable stance for the operator.

**JUNGHEINRICH**

ECR 327/336



		Standard Fork Tip								Extended Fork Tip					
Nominal Fork Length	inches	36.0	42.0	48.0	54.0	60.0	96.0	103.0	84.0	93.0	96.0	103.0	116.0	144.0	
Actual Fork Length	l inches	35.7	41.7	47.8	53.7	59.7	95.7	102.8	83.7	92.8	95.7	102.8	116.1	144.1	
Overall Length	l ₁ inches	78.0	83.9	90.0	95.9	101.9	138.0	145.0	125.9	135.0	138.0	145.0	158.8	185.8	
Wheelbase (raised)	y inches	49.4	55.4	61.5	67.5	73.5	109.6	116.6	81.5	81.5	81.5	81.5	114.3	109.3	
Load Wheel Distance	x inches	28.5	34.4	40.5	46.5	52.4	88.5	95.5	60.4	60.4	60.4	60.4	93.2	88.2	
Fork Tip Length	l-x inches	7.3	7.3	7.3	7.3	7.3	7.3	7.3	23.3	32.3	35.3	42.3	23.0	55.0	
Grade Clearance	%	38.0	34.0	31.0	28.0	26.0	17.0	16.0	23.0	23.0	23.0	23.0	17.0	17.0	
Turning Radius (raised)	Wa inches	65.6	71.7	77.7	83.7	89.7	125.8	132.8	97.7	97.7	97.7	97.7	130.5	125.5	
Fork Width	e inches	9.0								9.8					

Technical Data

as of: 01/2010

Characteristics	1.1	Manufacturer (abbreviation)	Jungheinrich	Jungheinrich	1.1	
	1.2	Manufacturer's type designation	ECR 327¹⁾	ECR 336¹⁾	1.2	
	1.3	Drive	electric	electric	1.3	
	1.4	Type of operation	walkie/ride-on	walkie/ride-on	1.4	
	1.5	Load capacity/rated load	Q (lbs)	6000	8000	1.5
	1.6	Load center distance	c (inches)	24	24	1.6
	1.9	Wheelbase (raised)	y (inches)	61.5 ²⁾	81.5 ²⁾	1.9
Weights	2.1	Service weight incl. battery (see line 6.5)	lbs	2478	2723	2.1
	2.2	Axle loading, loaded front/rear	lbs	3111/5367	3234/7489	2.2
	2.3	Axle loading, unloaded front/rear	lbs	1925/553	2116/607	2.3
Wheels/Chassis	3.1	Tires	PU (polyurethane)	PU (polyurethane)	3.1	
	3.2	Tire size, front	inches	13.5 x 3.3	13.5 x 3.3	3.2
	3.3	Tire size, rear	inches	3.2 x 6.5	3.2 x 6.5	3.3
	3.4	Additional wheels (dimensions)	inches	5.5 x 2.1	5.5 x 2.1	3.4
	3.5	Wheels, number front/rear (x = driven wheels)		1 x + 2/2	1 x + 2/2	3.5
	3.7	Track width, rear	b ₁₁ (inches)	17.8/13.0	17.8/13.0	3.7
	Dimensions	4.4	Lift height	h ₃ (inches)	5.9	5.9
4.15		Lowered fork height	h ₁₃ (inches)	3.25	3.25	4.15
4.19		Overall length	l ₁ (inches)	90.0	138.0	4.19
4.20		Length to fork face (headlength)	l ₂ (inches)	42.3	42.3	4.20
4.21		Overall width	b ₁ (inches)	35.8	35.8	4.21
4.22		Fork dimensions	s/e/l (inches)	2.4/9.0/47.7	2.4/9.8/95.7	4.22
4.25		Overall fork width	b ₅ (inches)	22.0/26.8	22.8/27.6	4.25
4.32		Ground clearance, center of wheelbase	m ₂ (inches)	0.98	0.98	4.32
4.33		Aisle width for pallets 48 x 40 (L x W)	Ast (inches)	93.3 ²⁾³⁾	141.3 ²⁾³⁾	4.33
4.35	Turning radius	Wa (inches)	77.7 ²⁾	97.7 ²⁾	4.35	
Performance	5.1	Travel speed, loaded/unloaded	mph	6.8/9.3	5.9/9.3	5.1
	5.2	Lift speed, loaded/unloaded	ft/min	7.8/9.9	7.6/9.9	5.2
	5.7	Gradeability, loaded/unloaded	%	13/15	10/15	5.7
	5.10	Service brake		regenerative	regenerative	5.10
	5.11	Parking brake		electro-magnetic	electro-magnetic	5.11
Motors	6.1	Drive motor rating S ₂ 60 min	kW/HP	4.0/5.4	4.0/5.4	6.1
	6.2	Lift motor rating at S ₃ 10%	kW/HP	1.5/2.0	1.5/2.0	6.2
	6.4	Battery voltage, nominal capacity (at 6 hour rate)	V/Ah	24/750	24/750	6.4
	6.5	Battery weight (minimum)	lbs	933	933	6.5
	Other Details	8.1	Type of drive control		3-phase AC drive control	3-phase AC drive control
8.4		Sound level at the driver's ear	dB(A)	63	63	8.4
8.6		Steering		mechanical	mechanical	8.6

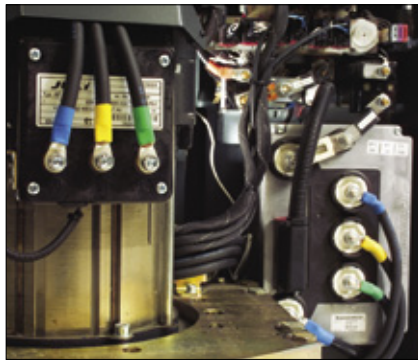
- 1) ECR 327 with 27 x 48 inch forks and standard fork tip; ECR 336 with 27 x 96 inch forks and extended fork tip
 2) Load section lowered: add 4.88 inches
 3) Includes 8 inches of maneuvering space

The Jungheinrich Advantage

Innovative 3-phase AC technology

Jungheinrich's proprietary 3-phase AC motor technology provides increased efficiency and reduced operating costs. The following advantages maximize uptime and productivity:

- Longer run times due to lower energy consumption and highly efficient energy management.
- Powerful acceleration and quick directional changes (plugging) without hesitation.
- No carbon brushes to replace, resulting in reduced maintenance requirements.



AC drive motor and controller

Controlled travel

SpeedControl, an impulse controller, facilitates safe, smooth travel and provides adjustable drive characteristics for every application.

- The requested travel speed on the motor-cycle-style throttle grip is maintained in every travel situation – including both upward/downward grades.
- Automatic parking brake prevents unintentional rollback on ramps or inclines.
- Individually adjustable travel parameters, such as acceleration, top speed, walkie speed and motor braking, allow for optimum adjustment to suit any application.



CanDis and CanCode

- 3 pre-set adjustable travel programs (optional).
- Crawl-speed button for maneuvering in tight areas with the handle in the vertical position.
- Very low noise level during travel.

Reliability

Jungheinrich's proprietary AC technology provides significantly greater reliability.

- Elimination of carbon brushes, springs and commutators in the 4 kW, 24 Volt AC motor limits maintenance expenses.
- The sealed controller, with a breathable Goretex membrane, is resistant to the harshest conditions. IP65 certification means it is protected against dust and can withstand inadvertent contact with pressurized water from all sides.
- The CAN-Bus system monitors truck parameters in real-time, providing instant diagnostics and feedback to the controller.
- The sealed connectors are also water and dust-resistant to IP65.

Available options

Several options are available to meet the specific needs of various applications, including:

- "CanDis" information display includes battery discharge indicator with lift interrupt, hour-meter and service code display.

- "CanCode" keypad with PIN code access and selectable travel programs.
- Coast Control (mechanical and electrical versions).
- Jog button in handle head.
- "ProPick" chassis-mounted, pedestrian jog control.



Storage tray and "ProPick" options

- Hinged load backrest (48 inches or 60 inches high).
- Storage tray mounted on battery or load backrest.
- Special color paint.
- Drive wheel and load wheel options.
- Pallet entry rollers for standard fork tip.
- Suspended platform.
- Anti-slip platform.
- Knee pads.
- Battery compartment rollers for side battery exchange.
- Battery gate switches.
- Freezer and corrosion packages.
- Accessory pole with option to mount working lights, strobe light and/or clipboard.
- Power hook-up for onboard terminal.
- Shrink wrap holder.



1-877-JH-FORKS

www.jungheinrich-lift.com

JUNGHEINRICH
Well worthwhile