

NISSAN
FORKLIFT

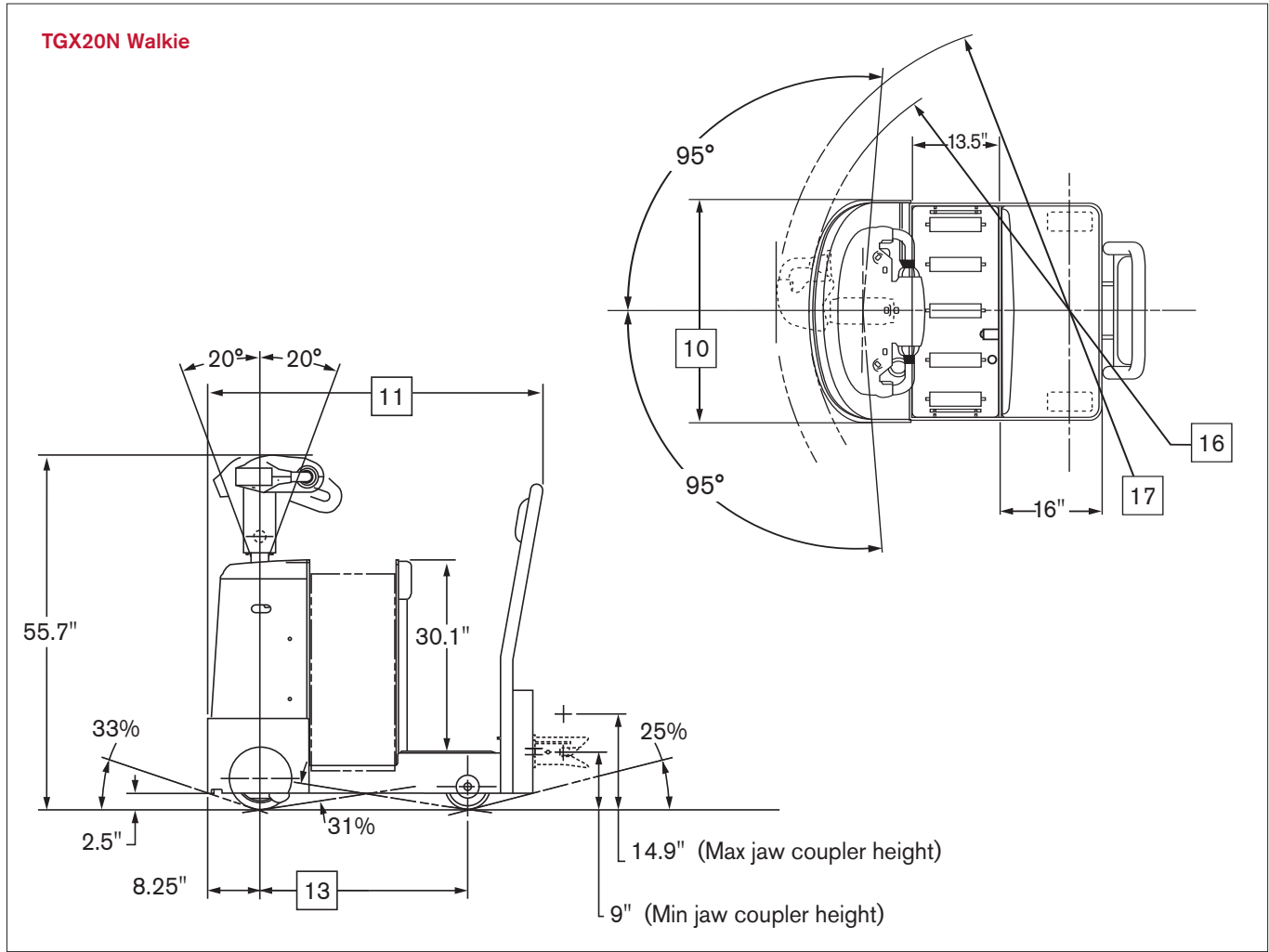
Platinum TGX Series

Walkie Rider Tow Tractor / **AC-Powered Models**

10,000 lb.
Rolling Load Capacity



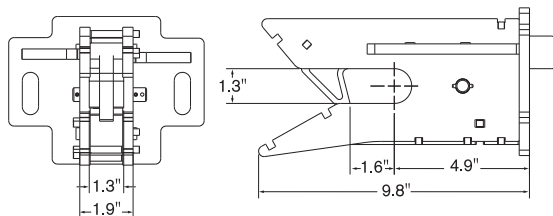
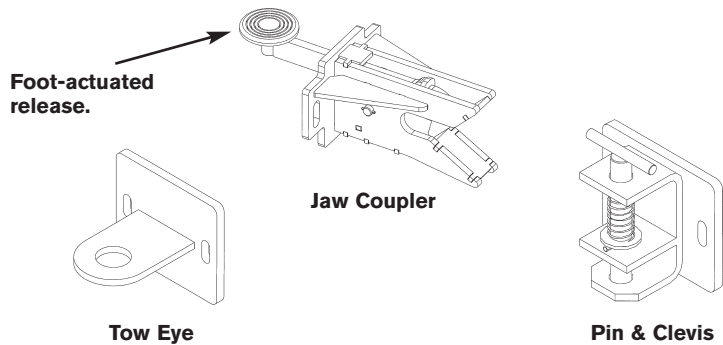
Dimensions



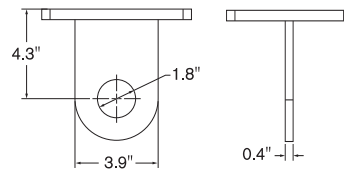
Adjustable Coupler Plates

Coupler plate allows each type of coupler to be adjustable in 1" increments

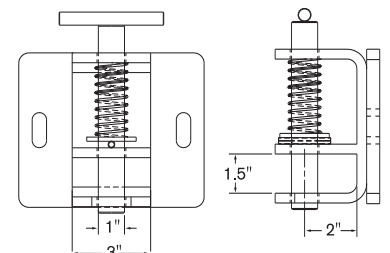
Type		Coupler Heights	
		Minimum	Maximum
Jaw Coupler	in (mm)	9.0 (228)	14.9 (380)
Tow Eye	in (mm)	9.3 (236)	15.3 (387)
Pin & Clevis	in (mm)	7.3 (186)	13.3 (337)



Jaw Coupler



Tow Eye



Pin and Clevis

10,000 lb. rolling load capacity

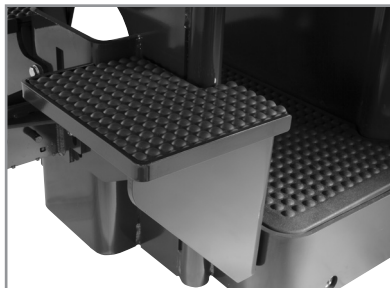
Main Truck Specifications

CHARACTERISTICS	1	Manufacturer's Name		Nissan	1	
	2	Model	Model designation	TGX20N	2	
	3		Long model code	TGXT2W4G20NV	3	
	4	Rolling Load Capacity		lb (kg)	10,000 (4535)	4
	5	Power Type	Electric		24 Volt	5
	6	Operator Type	Stand-up		Tow Tractor	6
	7	Tire Type	Drive tire		Solid Rubber	7
	8		Trail wheels		Poly	8
	9	Wheels	Drive/trail (x=driven)	number	1x / 2	9
DIMENSIONS	10	Overall Dimensions	Width	in (mm)	35.1 (890)	10
	11		Length - less coupler	in (mm)	52.8 (1340)	11
	12		Height - to top of steerhead	in (mm)	55.7 (1415)	12
	13	Wheelbase		in (mm)	32.7 (830)	13
	14	Front Overhang		in (mm)	8.25 (210)	14
	15	Grade Clearance	Under chassis	%	31	15
	16	Turning Radius	Minimum outside	in (mm)	41.0 (1040)	16
	17		Including handle (at 90°)	in (mm)	46.3 (1175)	17
	18	Truck Weight	No load, without battery	lbs (kg)	1195 (545)	18
	19	Tires / Wheels	Drive tire - dia. x width	in (mm)	10 x 4 (254 x 102)	19
20	Trail wheels - dia. x width		in (mm)	7 x 3 (178 x 76)	20	
SPEEDS	21	Speed - Travel	No load	mph (kph)	9.1 (14.6)	21
	22		Full load	mph (kph)	5.6 (9.0)	22
	23	Drawbar Pull	Normal	lb (N)	225 (1000)	23
	24		Maximum	lb (N)	710 (3158)	24
BATTERY	25	Compartment Size ¹	Length x Width x Height	in (mm)	33.3 x 13.5 x 31.6 (850 x 345 x 805)	25
	26	Amp Hr Capacity	Max (6-hr)	Ah	840	26
	27	Weight	Min / Max	lb (kg)	855 / 1500 (390 / 680)	27
	28	Lead Length	Position "B"	in (mm)	20 (508)	28
	29	Connector		type	SB-175 Red	29
	30	Battery Roller (Option)	Height from floor	in (mm)	7.05 (180)	30

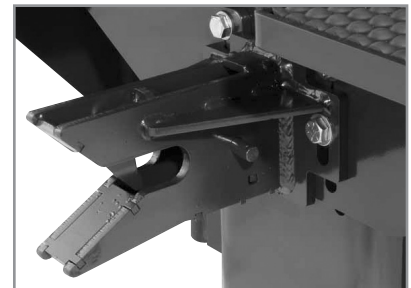
¹Battery compartment size with optional rollers & side gates - 30.9 x 13.5 x 31.6 (785 x 345 x 805)



Adjustable steerhead includes two butterfly controls allowing thumb or finger-tip actuation of travel and direction.



Rugged twin picking steps designed with traction padding are available as optional equipment.



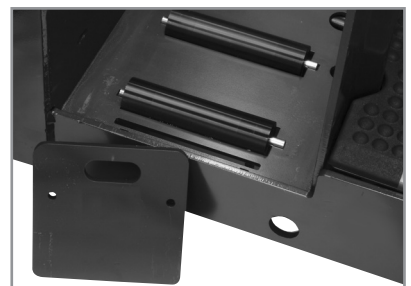
Standard jaw coupler has a robust design for secure towing. Its foot-operated release is conveniently located inside the operator compartment.



Optional multi-function LCD digital display includes PIN codes to restrict truck access, selectable performance modes, battery discharge indicator and speedometer. It also offers on-board diagnostics, troubleshooting and adjustment.



Optional convenience tray keeps operator items organized.



Battery roller design provides easier battery change out. Includes removable side gates.

Platinum TGX^{series}

Technical Information

Standard Equipment

- 24-volt electrical system
- Brushless AC drive motor and controller system
- Multi-function digital display includes battery discharge indicator with horn beep at low battery, (2) hour meters, and fault-code display
- Digital CAN-bus communications
- Programmable performance parameters, including speed settings up to 9.1 mph
- Adjustable steer head with butterfly speed control
- Fingertip accessible horn buttons
- Coast control with integrated sidetracker
- Large operator platform with antifatigue cushioned mat
- Padded front wall and operator backrest
- Electronic horn
- On/off key switch
- Heavy-duty steel hood and large front bumper
- Automatic jaw coupler with foot-operated release
- Rubber drive tire with string guard
- Heavy-duty, poly trail wheels with string guards
- Regenerative braking
- Spring applied/electronically released brake system with push button parking brake
- Sealed switches and controller for wet, cooler and freezer applications
- Motor and controller thermal protection
- Powder-coat paint finish

Optional Equipment

- Multi-function LCD display with:
 - PIN access
 - Selectable performance modes
 - BDI and speedometer
 - On-board diagnostics and troubleshooting
- Fixed steer head
- Twin picking steps
- Towing eye, pin and clevis, and other coupler designs available
- Magnetic mount convenience tray with stretch wrap holder
- Battery compartment rollers with side gates
- Battery gate interlock
- Non-marking rubber, traction rubber, or flat poly drive tire options

- Rubber or non-marking trail wheels
- Travel alarm
- Toggle switch

Ergonomics & Operator Comfort

T-style, adjustable steer head combined with cushioned platform and fully padded compartment provide an impressive workplace to achieve maximum operator comfort and reduced fatigue resulting in sustained productivity. The steer head's wide, 190° steering arc allows for precise maneuvering in tight spaces with minimal effort. Its ergonomic layout of soft touch switches includes two large thumb-actuated butterfly speed controls for simple operation.

Roomy, low profile compartment (8.8" platform height) permits easy entry/exit and walk-through. A cushioned platform mat provides added comfort.

The truck's standard coast control offers increased efficiency by allowing the truck to coast for more efficient order picking. Actuated by switches conveniently located on either side of the control head, the sidetracker feature allows the operator to walk beside the truck while performing low-level order picking, for greater efficiency and productivity.

Efficient Performance

Heavy-duty 5.2Hp, brushless, three-phase AC drive motor provides high power and torque to handle tough applications, with peak performance throughout the battery range. Longer run times per battery charge are achieved by using less energy per cycle.

For enhanced efficiency, its advanced motor controller/AC inverter electronically delivers power, as needed, to the AC drive motor. This system offers programmable regenerative neutral braking and proportional plugging. Its AC design eliminates forward and reverse contactors, and features electronic travel speed control for precise, efficient performance.

Optional Multi-Function LCD Display

An optional multi-function LCD display offers PIN codes to restrict truck access, selectable performance modes for customized productivity, and a battery discharge indicator with graphic representation of remaining battery charge. Plus, with its on-board diagnostics, troubleshooting, and adjustment, a service tech can make adjustments and perform maintenance without the need for a separate handset tool.

Smart Electric Brake

Electrical braking system utilizes regenerative motor torque prior to disc brake actuation, for less component wear and longer life. The spring-applied/electronically released disc brake system eliminates needed adjustments, for reduced maintenance. The service/park brake can be activated by pressing either brake button on the steer head.

Automatic Jaw Coupler

The standard heavy-duty automatic jaw coupler is equipped with a foot-operated release pedal, located inside the operator compartment. Optional couplers are also available (see page 2 for details).

Wheels

Wide drive and trail wheels offer increased floor surface contact and string guards help prevent debris from getting into axles and bearings.

Drive Unit Assembly

Vertically-mounted, balanced drive system with drive motor, transmission and drive tire, reduces steer effort and prevents unbalanced torque conditions. Quiet, spiral beveled gear drive system with sealed ball bearings, provides solid performance with low steer effort. Five-nut removal of the drive tire simplifies replacement when needed.

Ease of Maintenance

Brushless AC drive motor uses fewer components and requires less maintenance for lower operating costs. Easily accessible, rotation sensing encoder is externally mounted on the drive motor for simplified replacement. Motor and controller feature thermal protection

system to slow or shut down truck in response to high temperatures.

Digital CAN communication between the controller and steer head reduces the number of wires in the steer head harness, for reduced maintenance. Hall Effect speed and acceleration control sensor simplifies maintenance and limits downtime due to its non-contact design, with no mechanical wiping action, potentiometers, or heaters. Onboard diagnostics simplifies maintenance.

One-piece cover removal makes access to the drive unit, and major components quick and easy. All lubrication fittings are easily accessible with the truck upright.

Environmental

All components are designed to withstand wet, cold and/or freezer applications to -20° F (-28.9° C). The main controller features an ingress protection rating of IP65 against dust and moisture intrusion.



ISO 14001:2004
NISSAN GREEN PROGRAM

Nissan Forklift Corporation reserves the right to make product changes relating to colors, equipment, specifications or available options without notice. For more information, contact your Nissan Forklift representative.

NISSAN
FORKLIFT