

NISSAN
FORKLIFT

Platinum WPX Series

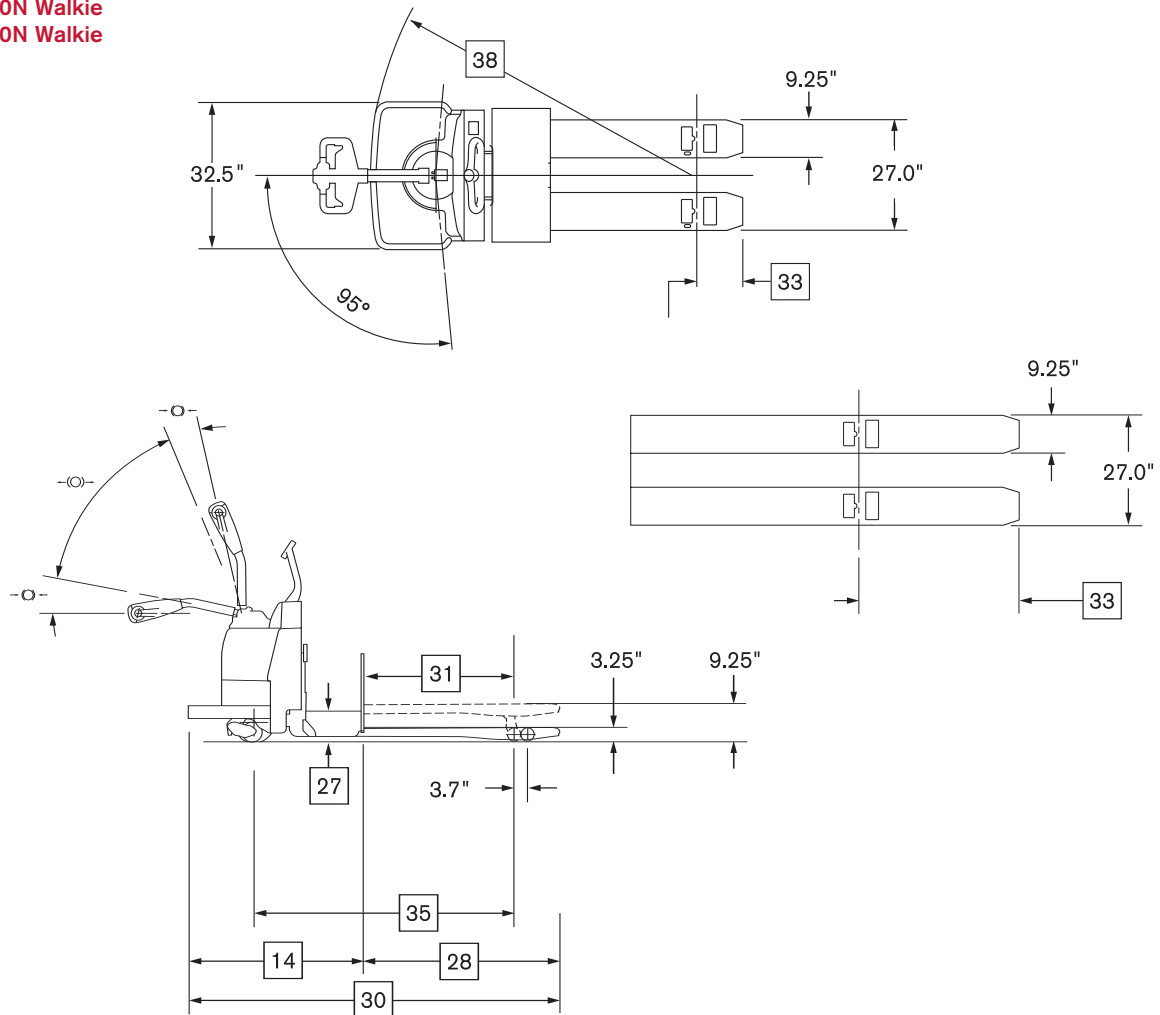
Walkie Pallet Truck / **AC-Powered Models**

6,000 & 8,000 lb.
Capacities

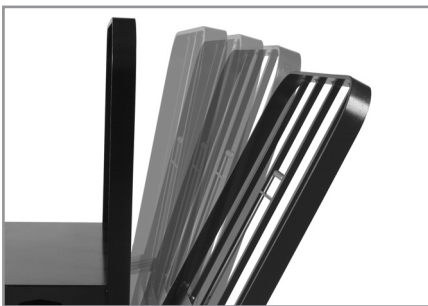


Dimensions

WPX60N Walkie
WPX80N Walkie



Options



Load backrests have slip-on or tilt-down designs available to facilitate battery change out. Tilt down includes Nissan's EZ release feature.



Optional multi-function LCD digital display includes PIN codes to restrict truck access, selectable performance modes, battery discharge indicator and speedometer. It also offers on-board diagnostics, troubleshooting and adjustment.



Battery roller design provides easier battery change out. Includes removable side gates.

6,000 & 8,000 lb. capacity

Main Truck Specifications

				Nissan	Nissan		
CHARACTERISTICS	1	Manufacturer's Name		Nissan	Nissan	1	
	2	Model	Model designation	WPX60N	WPX80N	2	
	3		Long Model Code	WPXT2W1G60NV	WPXT2W1G80NV	3	
	4	Load Capacity	Rated capacity	lb (kg)	6000 (2720)	8000 (3630)	4
	5	Power Type	Electric		24 Volt	24 Volt	5
	6	Operator Type			Walkie	Walkie	6
	7	Tire Type	Drive tire		Solid Rubber	Solid Rubber	7
	8		Load wheels		Vulkollan Poly	Vulkollan Poly	8
FORKS	9	Wheels	Drive/load (x=driven)	number	1x / 2	1x / 2	9
	10	Fork Size	Outside spread	in (mm)	27 (685)	27 (685)	10
	11	Fork Height	Raised position	in (mm)	9.25 (235)	9.25 (235)	11
	12		Lowered position	in (mm)	3.25 (82.5)	3.25 (82.5)	12
DIMENSIONS	13	Individual Fork Width		in (mm)	9.25 (235)	9.25 (235)	13
	14	Overall Dimensions	Head length	in (mm)	34.7 (880)	34.7 (880)	14
	15	Width	Chassis	in (mm)	32.5 (825)	32.5 (825)	15
	16	Tires / Wheels	Drive tire - dia. x width	in (mm)	10 x 5 (254 x 127)	10 x 5 (254 x 127)	16
SPEEDS	17		Load wheels - dia. x width	in (mm)	3.25 x 6 (83 x 152)	3.25 x 6 (83 x 152)	17
	18	Speed - Travel	No load	mph (kph)	3.7 (5.9)	3.7 (5.9)	18
	19		Full load	mph (kph)	3.7 (5.9)	3.7 (5.9)	19
	20	Speed - Lift / Lower	No load	sec.	3.6 / 5.1	3.6 / 5.1	20
BATTERY	21		Full load	sec.	5.1 / 4.8	6.1 / 4.7	21
	22	Compartment Size ¹	Length x Width x Height	in (mm)	31.9 x 13.25 x 32 (810 x 335 x 815)		22
	23	Amp Hr Capacity	Max (6-hr)	Ah	750	750	23
	24	Weight	Min / Max	lb (kg)	800 / 1500 (365 / 680)		24
	25	Lead Length	Position "B"	in (mm)	20 (508)	20 (508)	25
	26	Connector		type	SB-175 Red	SB-175 Red	26
	27	Battery Roller (Option)	Height from floor (forks lowered)	in (mm)	7.9 (200)	7.9 (200)	27

¹ Battery compartment size with adjustable retainers - 30.9 x 13.25 x 32 (785 x 335 x 815); w/optional rollers & side gates - 31.1 x 13.25 x 32 (790 x 335 x 815)

Specifications

				Single Pallet				Double Pallet		
SPECIFICATIONS	28	Fork Length	Nominal	in	36	42	48	84	96	28
	29		Actual	in (mm)	35.7 (910)	41.7 (1060)	47.7 (1210)	59.7 (1515)	95.7 (2430)	29
	30	Overall Truck Length		in (mm)	70.4 (1790)	76.4 (1940)	82.4 (2095)	94.4 (2400)	130.4 (3315)	30
	31	Face of Forks to Center	Forks raised	in (mm)	24.4 (620)	30.4 (770)	36.4 (925)	48.4 (1230)	56.5 (1435)	31
	32	of Load Wheel	Forks lowered	in (mm)	28.0 (710)	34.0 (865)	40.0 (1015)	52.0 (1320)	60.1 (1525)	32
	33	Center of Load Wheel	Forks raised	in (mm)	11.3 (290)	11.3 (290)	11.3 (290)	11.3 (290)	39.2 (995)	33
	34	to Tip of Forks	Forks lowered	in (mm)	7.7 (195)	7.7 (195)	7.7 (195)	7.7 (195)	35.6 (905)	34
	35	Wheelbase	Forks raised	in (mm)	51.6 (1310)	57.6 (1465)	63.6 (1615)	75.6 (1920)	83.5 (2120)	35
	36		Forks lowered	in (mm)	55.2 (1405)	61.2 (1555)	67.2 (1710)	79.2 (2015)	87.1 (2215)	36
	37	Grade Clearance	Forks raised w/pallet	%	36.4	32.5	29.4	24.8	22.4	37
	38	Turning Radius		in (mm)	59.6 (1515)	65.5 (1665)	71.5 (1820)	83.5 (2125)	91.4 (2325)	38
	39	Right Angle Stacking Aisle ¹	40", 42", 48" Load Width	in (mm)	69.0 (1755)	75.0 (1905)	81.0 (2060)	93.0 (2365)	131.0 (3325)	39
	40	90° Equal Intersecting Aisle ¹	40" Load Width	in (mm)	57.5 (1460)	60.6 (1540)	63.8 (1620)	70.1 (1780)	76.8 (1950)	40
	41		42" Load Width	in (mm)	58.6 (1490)	61.7 (1570)	64.9 (1650)	71.2 (1810)	77.9 (1980)	41
42		48" Load Width	in (mm)	61.9 (1575)	65.0 (1655)	68.2 (1735)	74.5 (1895)	81.2 (2065)	42	
43	Truck Weight	No load, without battery	lbs (kg)	985 (450)	1015 (460)	1040 (475)	1095 (495)	1215 (550)	43	

¹ Add 6-8" for ease of operation. Includes 1" clearance on each side of load.

Platinum WPX^{series}

Technical Information

Standard Equipment

- 24-volt electrical system
- Brushless AC drive motor and controller system
- Multi-function digital display includes battery discharge indicator with lift lockout, (3) hour meters, and fault-code display
- Digital CAN-bus communications
- Programmable performance parameters
- Ergonomic control handle with butterfly speed control
- Fingertip control of lift, lower, and horn buttons
- Electric horn
- On/off key switch
- Tapered fork tips with pallet entry/exit slides
- Steel side stabilizers
- Adjustable battery retainers
- SB-175 red battery connector
- Vulkollan poly load wheels with string guards
- Rubber drive tire with string guard
- Regenerative braking
- Spring applied/electronically released brake system
- Sealed switches and controller
- Motor and controller thermal protection
- Hydraulic overload protection valve
- Powder-coat paint finish

Optional Equipment

- Multi-function LCD display with:
 - PIN access
 - Selectable performance modes
 - BDI and speedometer
 - On-board diagnostics and troubleshooting
- Magnetic mount convenience tray with stretch wrap holder
- Tilt-down load backrest with EZ release (48" or 60" extension)
- Slip on/off load backrest (48" or 60" extension)
- Battery compartment rollers with side gates
- Battery gate interlock
- Travel alarm
- Toggle switch
- Fork auto-lift function
- Non-marking rubber, traction treaded rubber or flat poly drive tire options
- Special paint colors

Ergonomics & Operator Comfort

A wide, 190° steering arc and large, sealed, ball-bearing steering mechanism allows exceptional turning with minimal effort. Spring-loaded handle and roomy steering control head promote effortless movement into the operating range. The control handle features tubular steel construction and the control head is constructed from a fiberglass-filled polymer composite, with internal steel reinforcements, for higher strength and increased durability.

Thumb or fingertip-actuated butterfly speed controls on either side provide easy and precise operation. Ergonomic, fingertip layout of the soft-touch lift, lower and horn buttons delivers comfortable operation.

Large switch on the end of the control head changes the truck's travel direction if operator contact is inadvertently made.

Efficient Performance

Heavy-duty 5.2Hp, brushless, three-phase AC drive motor provides high power and torque to handle high productivity operations, with peak performance throughout the battery range. Longer run times per battery charge are achieved by using less energy per cycle.

Its advanced motor controller/AC inverter electronically distributes power, as needed, to the AC drive motor, or DC pump motor, for enhanced efficiency. This system offers programmable regenerative neutral braking and proportional plugging. The AC design eliminates forward and reverse contactors, and uses electronic travel speed control for precise, efficient performance.

Optional Multi-Function LCD Display

An optional multi-function LCD display offers PIN codes to restrict truck access, selectable performance modes for customized productivity, and a battery discharge indicator with graphic representation of remaining battery charge. Plus, with its onboard diagnostics, troubleshooting, and maintenance adjustment capabilities, a service technician can make adjustments and perform maintenance without the need for a separate handset tool.

Smart Electric Brake

Electrical braking system utilizes regenerative motor torque prior to disc brake actuation, for less component wear and longer life. The spring-applied/electronically released disc brake system eliminates needed adjustments, resulting in reduced maintenance and lower operating costs. Brake actuation occurs when the handle is in the upper and lower braking range.

Fork Assembly

Forks are 9¼" wide and constructed from ¼" plate steel, and designed with a reinforced tip for extra durability. Various lengths are available for both double and single pallet fork options. All come with standard 27" wide fork spread.

Proven, push-type lift linkage design uses rugged 1½" x 1½" solid steel tie rods to absorb high impact shocks caused by dock boards and dock plates. Push type design achieves full 6" of lift while preventing the tie rods from extending beyond the fork plane. This design also reduces maintenance since no adjustments are needed.

Alloy steel fork slides facilitate pallet entry and exit eliminating the need for entry rollers or discs. Tie rods are positively aligned and pinned to eliminate the need for field adjustments. Full-length, angle iron reinforcements enhance torsion strength for increased durability and longer life.

Optional Auto-Lift

Release the lower button when the forks are lowered and the forks automatically lift 2½" to prevent them from dragging across uneven floors.

Wheels

6" wide Vulkollan poly load wheels with dual bearings offer increased floor surface contact and string guards help prevent debris from getting into axles and bearings. Load wheels swing through a small 7" arc to achieve a full 6" lift.

Hydraulics

The heavy-duty integrated lift system (including DC motor, lift pump and fluid reservoir), features an overload valve to protect hydraulic

components, and includes a check valve and flow regulator. No lift limit switch is needed since the controller cuts out pump.

Drive Unit Assembly

Quiet, spiral beveled gear drive system with sealed ball bearings, provides solid performance with low steer effort. Five-nut removal of the drive tire simplifies replacement when needed.

Ease of Maintenance

Brushless AC drive motor uses fewer components and requires less maintenance so lower operating costs are achieved. Easily accessible, rotation sensing encoder is externally mounted on the drive motor for simplified replacement. As an added safeguard the truck motor and controller feature thermal protection which slows or shuts down the truck in response to high temperatures.

Digital CAN communication between the controller and control handle reduces the number of wires in the control handle harness, for reduced maintenance. Hall Effect speed and acceleration control sensor simplifies maintenance and limits downtime due to its non-contact design with few moving parts, and with no mechanical wiping action, potentiometers, or heaters. Elimination of directional and lift contactors, combined with enhanced thermal capabilities means optimum performance and minimal downtime. On-board diagnostics simplifies maintenance.

One-piece cover with two-bolt removal makes access to the drive unit, and major components quick and easy. All lubrication fittings are easily accessible with the truck upright.

Environmental

This truck is ideal for applications with multiple environments. All components are designed to withstand wet, cold and/or freezer applications to -20° F (-28.9° C). The main controller features an ingress protection rating of IP65 against dust and moisture intrusion.



ISO 14001:2004
NISSAN GREEN PROGRAM

Nissan Forklift Corporation reserves the right to make product changes relating to colors, equipment, specifications or available options without notice. For more information, contact your Nissan Forklift representative.

NISSAN
FORKLIFT