



# TL943

## Telehandler



## SPECIFICATIONS

### Engine

Model	Cat® 3054C	
Gross Power (Basic)	74.5 kW	99 hp
Net Power (Basic)	70.4 kW	94.5 hp

- Net Power shown is the power available at the flywheel when equipped with fan, air cleaner, muffler, and alternator.

### Weights

Operating Weight	11 814 kg	26,050 lb
------------------	-----------	-----------

### Operating Specifications

Rated Load Capacity	4082 kg	9,000 lb
Maximum Lift Height	13.1 m	43 ft
Maximum Forward Reach	9.6 m	31.4 ft
Frame Leveling	10°	
Top Travel Speed	28.3 kph	17.6 mph
Capacity at Max Height	3175 kg	7,000 lb
Capacity at Max Reach	544 kg	1,200 lb
Turning Radius over Tires	3.7 m	12 ft

### Hydraulic System — Implement

Gear Pump	Tandem	
-----------	--------	--

- Auxiliary Hydraulic Circuit used for all attachments equipped with cylinders or other hydraulic components. Consists of valves, controls, and hydraulic lines.

### Service Refill Capacities

Fuel Tank	144 L	38 gal
Hydraulic System	151.4 L	40 gal

### Work Tools

Hydraulic IT Coupler	Includes Auxiliary Electrics	Includes Auxiliary Electrics
Standard Tilt Carriage	1270 mm	50 in
Wide Tilt Carriage	1829 mm	72 in
Pallet Forks	(2) 1524 mm, 51 mm x 152 mm (2) 1219 mm, 60 mm x 102 mm	(2) 60 in, 2 in x 6 in (2) 48 in, 2.36 in x 4 in
Cubing Forks	(2) 1219 mm, 51 mm x 51 mm	(2) 48 in, 2 in x 2 in
Standard Rotate Carriage	1270 mm	50 in
Wide Rotate Carriage	1829 mm	72 in
Swing Carriage	100°, 1829 mm, 4028 kg Capacity, 2268 kg Swung	100°, 72 in, 9,000 lb Capacity, 5,000 lb Swung
Side Shift Carriage	1.22 m	48 in

### Tires

Standard	13.00 x 24-12 PR	
Optional	13.00 x 24 Foam Filled 13.00 x 24 Rock Lug	

### Transmission Speeds

Forward	4 speed	
Reverse	3 speed	

### Boom Performance

Boom Up	11.8 Seconds	
Boom Down	9.1 Seconds	
Tele In	12.9 Seconds	
Tele Out	14.7 Seconds	
Drawbar Pull (Loaded)	10 258 kg	22,619 lb

### Axles

- Trunnion mounted planetary 55 degree steer axles.
- Integral steer cylinder.
- High bias limited slip differential on front axle.

### Brakes

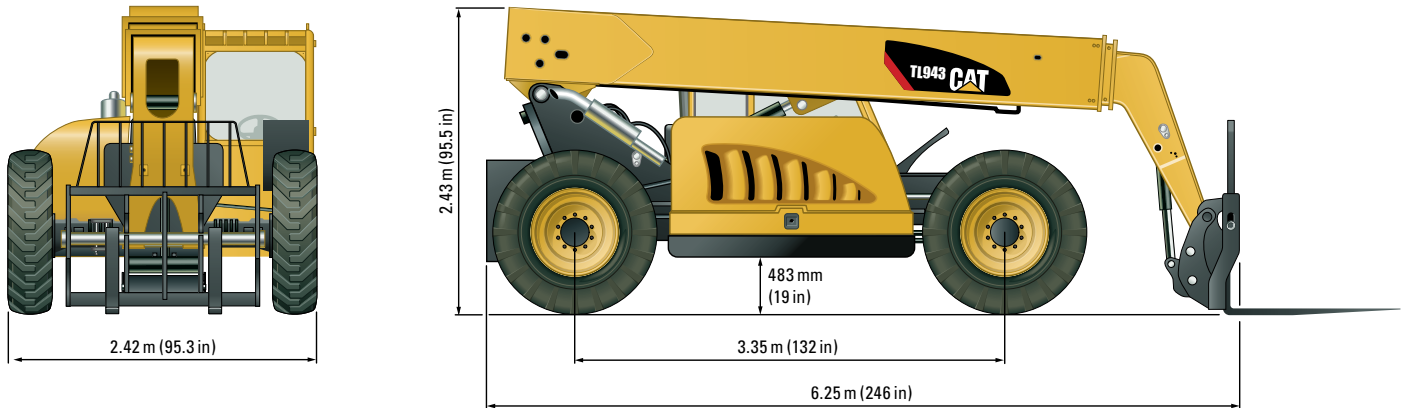
- Service Brakes are inboard wet disc brakes on front axle.
- Parking Brakes are wet disc spring-applied hydraulic release. Light on dash indicates when brake is on.

### Instruments

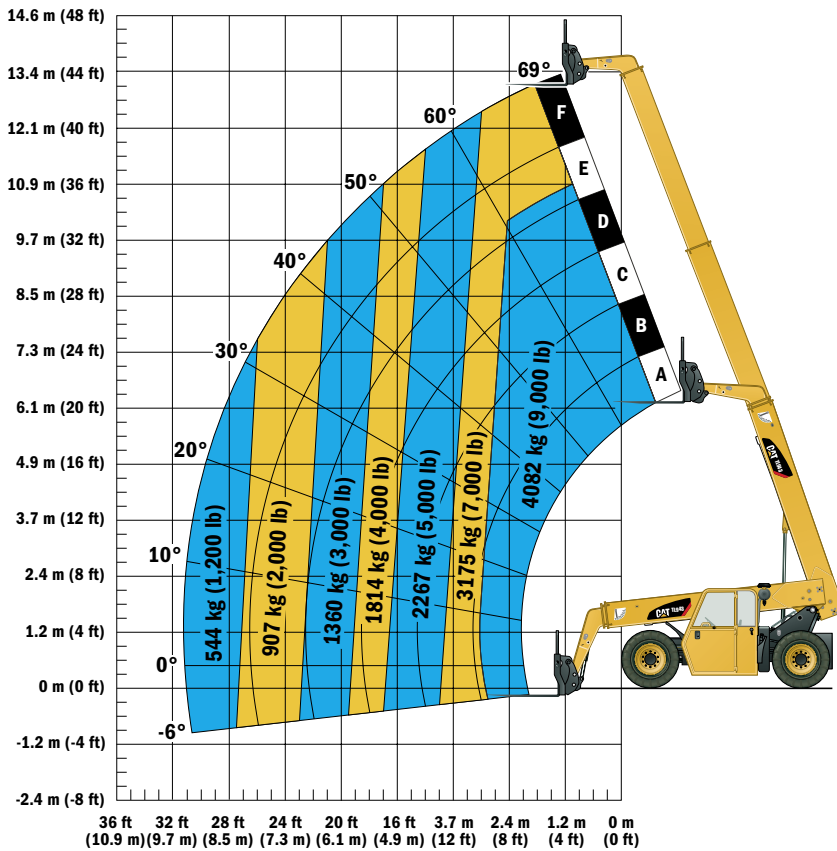
- Volt meter, hourmeter, engine oil pressure gauge, fuel gauge, water temperature gauge. All gauges protected by clear acrylic cover.

**Dimensions**

All dimensions are approximate.



**Load Chart and Dimensions**



**IMPORTANT**

Rated lift capacities shown are with machine equipped with carriage and pallet forks. The machine must be level on a firm surface with undamaged, properly inflated tires. Machine specifications and stability are based on rated lift capacities at specific boom angles and boom lengths. (If specifications are critical, the proposed application should be discussed with your dealer.)

DO NOT exceed rated lift capacity loads, as unstable and dangerous machine conditions will result.

DO NOT tip the machine forward to determine the allowable load.

Use only JLG approved attachments with proper material handler model/attachment load capacity charts displayed in the operator's cab. OSHA requires all rough terrain forklift operators be trained according to OSHA 29 CFR 1910.178 (1).

*Due to continuous product improvements, machine specifications and/or equipment changes may be made without prior notification. This machine meets or exceeds ANSI/ITSDF B56.6-2005 as originally manufactured for intended applications.*

