

HTT 8675

SERIES II

75-ton (70.0 mt) Hydraulic Truck Crane

TE 8675

SERIES II

75-ton (70.0 mt) Truck Terrain Crane

- 75 tons at 9 ft radius (70.0 mt at 2.5m radius)
- 41-127 ft (12.5-38.7 m) four section, full power latching boom with no charted capacity deductions for telescoping loads
- 38 ft - 64 ft (11.6-19.5 m) two-piece, bi-fold, on-board lattice attachment with 2°, 15°, 30°, and 45° offsets
- Two 16 ft (4.9 m) lattice extensions provide a total attachment length of 96 ft (29.3 m) - optional
- 230 ft (70.2 m) maximum tip height
- Modular style counterweights
- 16,880 lbs (7 656.6 kg) maximum winch line pull
- 460 fpm (140.2 m/min) maximum winch line speed
- Next generation operator's cab with improved visibility and ergonomics
- Automated manual transmission
- Front and rear air ride suspension
- Anti-lock (ABS) brakes
- Four lockable storage compartments available
- "Stow 'n Go" steel pontoons



The HTT's all-wheel steer provides outstanding on-site mobility.



Link-Belt
C R A N E S

HTC 8675

SERIES II

75-ton (70.0 mt) Hydraulic Truck Crane

HTT 8675

SERIES II

75-ton (70.0 mt) Truck Terrain Crane

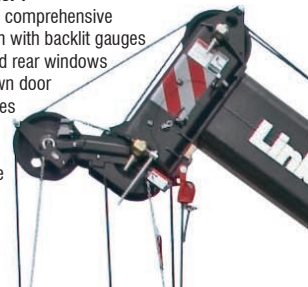
- 4-section full power latching boom with attachment flexibility
- Big, wide cab with outstanding visibility
- Winches deliver impressive numbers of line pull and line speed
- Counterweight flexibility, big engine and transmission power, along with air ride promise incredible mobility on the road or on the job

↓ All counterweight configurations can be raised and lowered by hydraulic cylinders from either side of the upper structure for ease of installation and removal.



Comfortable carrier :

- Dash-mounted comprehensive instrumentation with backlit gauges
- Sliding side and rear windows and roll up/down door window provides excellent ventilation
- Fully adjustable air-ride fabric seat
- Suspended pedals



38-64 ft (11.6-19.5 m) two-piece bi-fold lattice attachment with 2°, 15°, 30° and 45° offsets



Outstanding mobility on the road and on the job site

- Cruise control
- Three stage engine compression brake
- Ether injection system – optional
- Automated manual transmission (no clutch pedal) — 12 speeds forward, 2 speeds reverse with two modes of operation: fully automatic and semi-automatic
- Job site travel is permissible with all 18,400 lbs (8 346.1 kg) of counterweight for exceptional job site versatility:
 - HTC: 1.3 mph (2.1 km) job site travel
 - HTT: 1.2 mph (1.9 km) job site travel
- Highway speeds unmatched in the industry today:
 - HTC: up to 62.8 mph (101.1 km/hr)
 - HTT: up to 56.1 mph (90.2 km/hr)



↑ Boom dolly/trailer ready when equipped with optional boom float kit and rear electrical and air connections

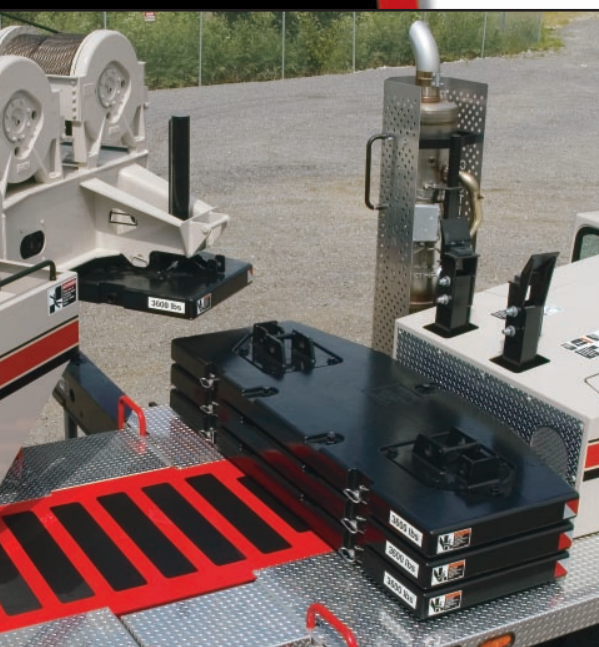
→ Optional rear electrical and air connections

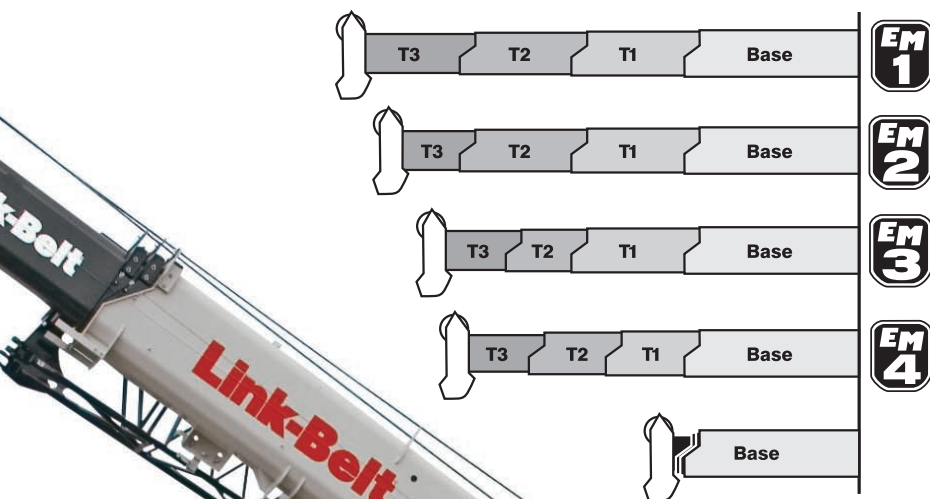


↓ There are two standard locking storage boxes with options for up to four boxes.



↓ Raydan™ air-ride suspension front and rear provides a smooth ride and precise handling. Optional air-ride lift system holds the rear suspension retracted while the crane is on outriggers.





4-section full power latching boom with attachment flexibility

- 41-127 ft (12.5-38.7 m) latching boom with four boom modes for superior capacities throughout the extension range
- No charted capacity reductions for telescoping loads
- Boom requires no greasing because of ingenious Teflon wear pucks impregnated in the full contact wear pads
- No minimum boom angle for extending or retracting the boom sections
- 38-64 ft (11.6-19.5 m) two-piece, bi-fold, on board lattice attachment with 2°, 15°, 30°, and 45° offsets
- Two 16 ft (4.9 m) lattice inserts provide a total attachment length of 96 ft (24.4 m)
- 230 ft (70.2 m) maximum tip height



Optional hoist drum cable follower and optional third wrap indicators

Standard 10,800 lbs (4 898.8 kg) counterweight

Folding viewing mirror for travel

Optional integrated air conditioning

Pull-out CabWalk™ slides out from secured travel position underneath operator's cab

Mechanical boom angle indicator - standard

Innovative two-part paint coating technology, coupled with pre-assembly paint process, provides the finest quality coating system available today.

Large engine doors allow for easy access

Non-slip surface strips on carrier deck

Optional daytime running lights

Self-storing fifth outrigger pontoon

Large west coast-style rear viewing mirrors

Integrated air conditioning (not a roof-mounted system)

Full air, S-cam anti-lock (ABS) brakes

Aluminum wheels and radial tires

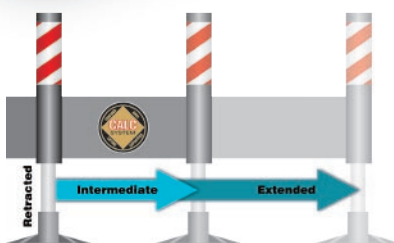
Stow 'n Go outrigger pontoons

Carrier-mounted outrigger controls located on each side of carrier, include an engine throttle-up switch for fast outrigger deployment. For fine level adjusting of the carrier, throttle can be taken down to idle.

Powerful and responsive hydraulics

- Six pump, pressure compensated hydraulic system allows simultaneous and precise function of boom hoist, winch, swing, and telescope.
- Two-speed hydraulic piston motor hoist system delivers superior hoisting. Matched size optional front and rear winches provide equal max line pulls of 16,880 lbs (7 657 kg) and max line speeds of 460 fpm (140.2 m/min) on 16" (41 m) root diameter groove drums.
- Drum rotation indicators - standard.
- Bi-directional hydraulic swing motor mounted to a planetary reduction unit for 360° continuous smooth swing. Spring applied hydraulic released 360° swing park brake provides infinite swing park positions as well as free swing when control is in neutral position.

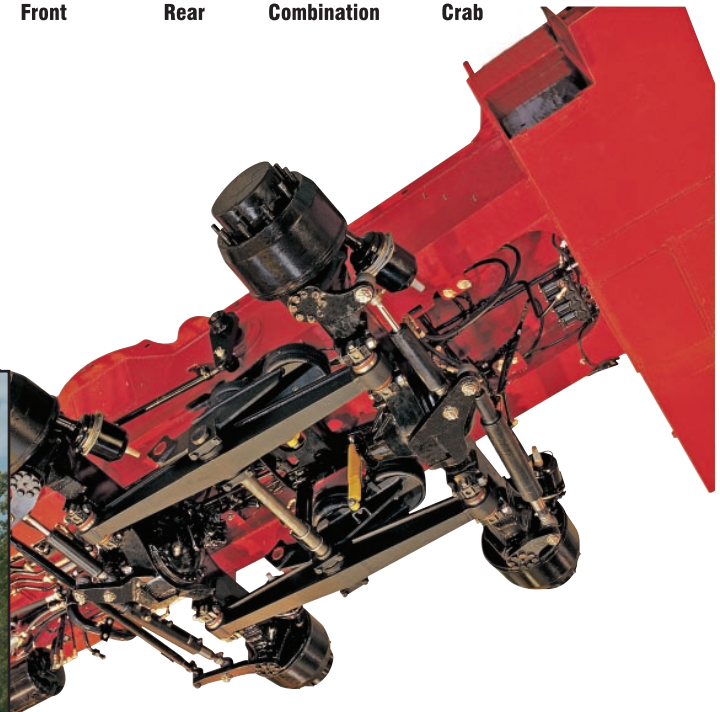
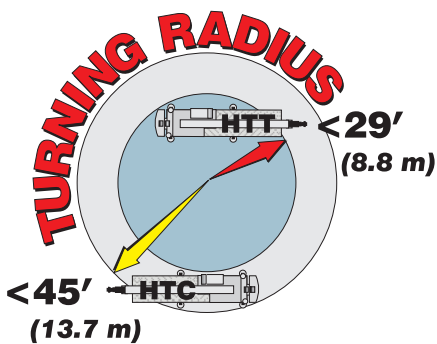
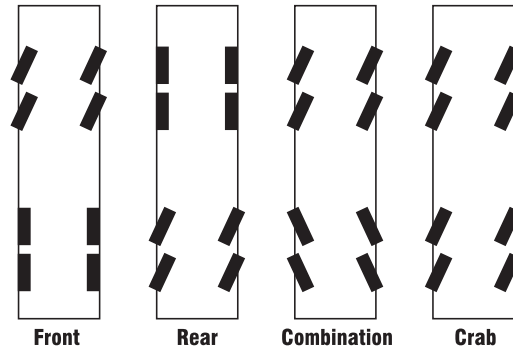
CALC — Outrigger beams have three different stages (retracted, intermediate, and fully extended) providing lifting capacities in confined areas.





Steerable all wheel axles, in conjunction with super single tires, makes the HTT even harder to beat on the job-site. And NO changes to the on-outrigger capacity charts.

- Drive and steer capabilities for the rear axles
- Four steering modes:
 - Independent front
 - Independent rear
 - Combination
 - Crab
- Rear axles self-center and lock in the straight ahead position for high speed travel.
- Turning radius under 29 ft (8.8 m) at the edge of the tire
- 445/65R22.5 tires front and rear that are interchangeable
- Only one spare rim and tire combination is needed.
- Transverse (cross-axle) differential locks that greatly improve traction on unimproved job-site conditions.



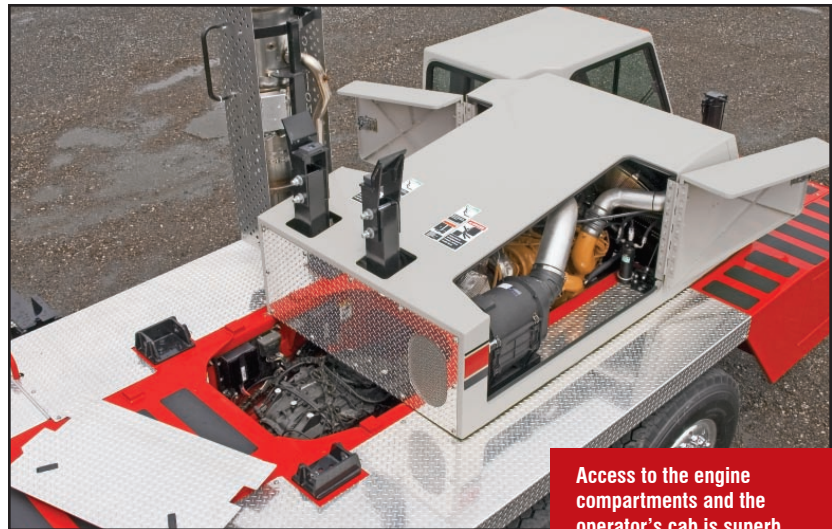


Roomier and quieter operator's cab

- Extra large front window almost seamlessly merges into the roof window
- Sliding left side door, right and rear windows, and swing up top window provide excellent ventilation
- All gauges, switches, indicators, and controls are placed in the operators forward line of sight for excellent ergonomics
- All gauges and switches are backlit for excellent visibility when the cab working lights are switched to the on position
- Available — Integrated air conditioning utilizes the same ventilation outlets as the standard heating system



Integrated Microguard rated capacity limiter with color graphic display, for excellent contrast even in direct sunlight, aids the operator in safe and efficient operation by continuously monitoring a multitude of crane conditions. Optional external and internal light bars inform the operator and/or ground crew of the percentage of capacity.



Access to the engine compartments and the operator's cab is superb with strategically-located ladders and steps.



Multiple counterweight configurations give you capacities for any size job

- Standard – Total of 10,800 lbs (4 898.8 kg) of removable counterweights. Capacities for four different counterweight configurations.
- Optional – Up to 18,400 lbs (8 346.1 kg) of removable counterweights. Capacities for up to six different counterweight configurations.
- All configurations can be raised and lowered by hydraulic cylinders from either side of upper structure for ease of installation and removal.

**Your crane investment is
always protected ... with your
Link-Belt distributor.**

When you invest in a Link-Belt crane, you invest in a legacy of outstanding customer support dating back to 1874. The ultimate value of a machine begins with state-of-the-art design and quality manufacturing, but it is the excellent Link-Belt distributor product support that determines its long term value. This philosophy has earned Link-Belt cranes the enviable position of traditionally commanding some of the highest resale prices in the industry.

"... to be
recognized
as a
leader
in
**customer
service &
satisfaction.**"
— The Link-Belt Vision

As a member of Link-Belt Cranes user's group, you will have access to:

Link-Belt
Preferred

- Online access to a comprehensive library of all parts, service and operator manuals for YOUR crane
- Interactive, live groundbearing calculations for YOUR crane
- Plus a vast array of information on new products, services and special offerings



Link-Belt headquarters - Lexington, Kentucky

Master Technician TRAINING PROGRAM

Link-Belt's investment in the highly acclaimed Master Technician Training Program is further testimony to its commitment to highly trained, experienced service personnel.

Technical schools are specifically designed to establish proficiency in three phases: fundamentals, machine systems, and diagnostics/repair. To further support these highly trained distributor personnel, Link-Belt has dedicated, full time factory technical advisors available with comprehensive machine records, drawings and technical publications to quickly isolate and resolve service issues.

Link-Belt Construction Equipment Company is a leader in the design, manufacture and sales of telescopic and lattice boom cranes, with headquarters in Lexington, Kentucky.

In the recent decade, a dynamic and highly focused Link-Belt has emerged as a market leader in crane design and product quality standards by focusing on continuous improvement and employee empowerment.

Link-Belt's core production base and center for worldwide operations is its 500,000 sq. ft. (46 451.5 m²) manufacturing facility in Lexington, Kentucky.

With major expansions over the last ten years, along with continuous improvement philosophies, this facility has emerged as the most modern crane facility in North America.



No one knows your Link-Belt crane better than our trained technical specialists and coupled with the energy of our customer parts representatives, no one in the crane industry provides faster, more efficient customer service.

With state of the art computer information systems, distributors order Genuine Link-Belt Parts 24 hours a day, 7 days a week.

Our dedicated 72,000 sq. ft. (6 689 m²) Parts Distribution Center is an integral part of our product support commitment where we invest in an extensive and well planned parts inventory. And all parts in stock ship the same business day.



Link-Belt Parts Distribution Center

Link-Belt[®]

C R A N E S

LINK-BELT CONSTRUCTION EQUIPMENT COMPANY

Lexington, Kentucky | www.linkbelt.com

© Link-Belt is a registered trademark. Copyright 2007. All rights reserved.

We are constantly improving our products and therefore reserve the right to change designs and specifications.

Litho in U.S.A. #4339 9/07