

# 953D WH

Waste Handler Track Loader

**CATERPILLAR**<sup>®</sup>



#### **Engine**

Flywheel Power	110 kW	148 hp
Engine Model	Cat <sup>®</sup> C6.6 ACERT <sup>™</sup>	

#### **Buckets**

Capacity – GP Landfill	2.3 m <sup>3</sup>	3 yd <sup>3</sup>
Capacity – MP Landfill	2.1 m <sup>3</sup>	2.74 yd <sup>3</sup>



## 953D WH Features

### Unmatched Versatility

The 953D Waste Handler is the all-purpose machine for small landfills and demolition sites.

Your track loader will be able to

- Excavate and stockpile to build new cells
- Keep the discharge area clear
- Load and tow trucks
- Sort out recyclables and spread trash
- Excavate, carry and spread soil cover material
- Compact top layer before daily cover is applied

### Improved Serviceability

Radiator guard and hydraulic fan door are hinged to provide a quick and easy access for cleaning and servicing.

Most of daily maintenance checks are performed from right side and ground level. A 90° tiltable cab allows complete service of the hydraulic system.

### Engine

The Cat® C6.6 engine with ACERT™ Technology meets stringent Tier 3/Stage IIA and Japan MLIT Step 3 emission regulations while providing outstanding engine performance, fuel efficiency and long-term durability.

### Undercarriage

SystemOne™ is a Cat exclusive. Designed exclusively by Caterpillar for Cat machines, SystemOne extends undercarriage system life, improves reliability and reduces owning and operating costs.



**Our customers think the track loader is the 2nd most important machine behind the compactor in a landfill.**

**Discover the assets of this Cat® Waste Handler ...**

### Contents

Waste Handling Arrangement .....	3
Options .....	4
953D Waste Handler Specifications .....	5
953D WH Standard Equipment .....	8
953D WH Optional Equipment .....	8

# Waste Handling Arrangement

Tailored for waste applications.

## Final Drive Seal Guards

Protects the Duo Cone seal against wrapping of wires or plastics.

## Hydraulic Reversible Fan

Purges the debris from the air inlets by reversing the airflow. Limits radiator plugging and increases maintenance interval.

## Turbine Precleaner

Increase engine air filter life by pre-cleaning the air.

## Guard, Idler and Lift Lines

Protects and limits the entry of debris into the tensioning system and lift lines.

It includes scrapers mounted around idler.

## Rubber Mounted Windshield

Makes the windshield replacement easy and fast.

## Eight Lights

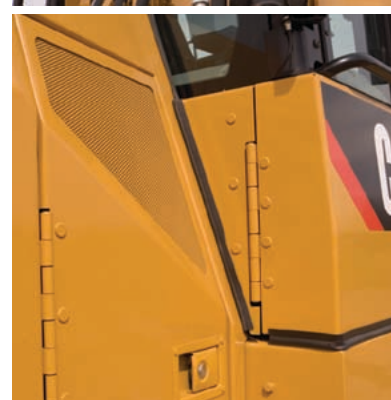
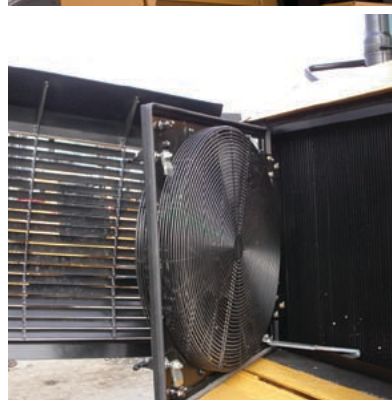
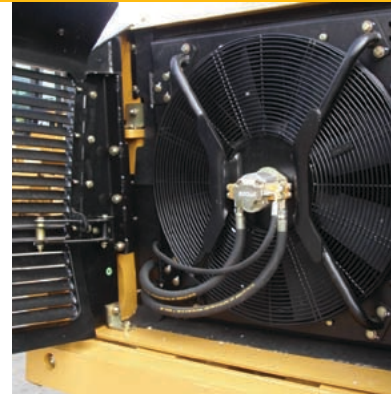
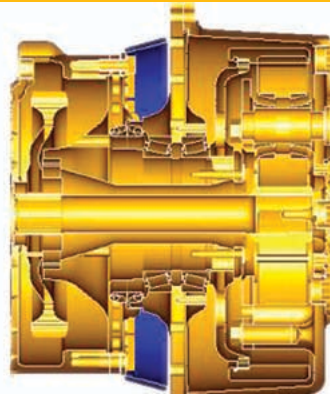
Increase work time with four lights at the front and four at the back.

## Hinged Grill and Radiator Fan

Provides excellent access to radiator and fan for cleaning.

## Extensive Sealing

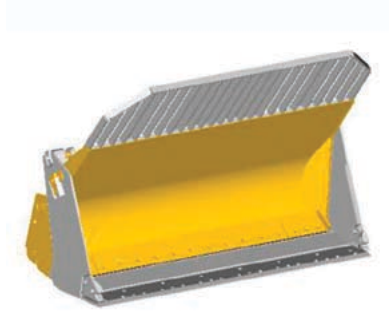
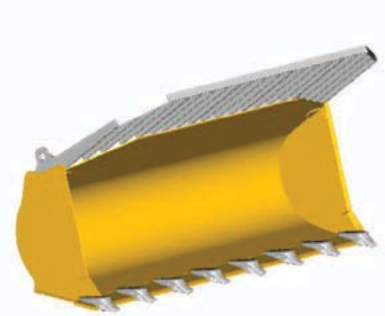
Improved sealing between engine enclosure, cab and frame limits radiator plugging.





# Options

Tailored for waste applications.



## Center Holes Shoes

The center holes in the track allow sprocket to punch out dirt and debris, that prevents an increase of track wear caused by an abnormal track tension. This is the best choice in landfill.

## Striker Bars

Very useful in landfills, the striker bars removes waste from the tracks to prevent damaging the fenders and the cab. Equipped with a step, it facilitate the access to the cab from the rear.

## General Purpose Bucket – Landfill

This trash rack increases the standard bucket capacity to move low density materials.

## Multi-Purpose Bucket – Landfill

This buckets provides the ability to load, push, grab. Trash rack increases the standard MP bucket capacity to move low density materials.

## Guard, Cab Lights and Windshield Screen

Provides additional protection to the windshield and the lights against debris.

## Guard Track Roller

Provides additional protection for rollers and reduce debris entry inside the links.

## Tilt Cab System

The D-Series enables the cab to tilt up to 90°. The optional hydraulic jack provides a 30° tilting capability recommended for an easy servicing in the field.

## Fast Fill System

Special port and vent designed to minimize the fuel tank refill time and increase productivity.

## Engine

Flywheel Power	110 kW	148 hp
Engine Model	Cat® C6.6 ACERT™	

- Engine ratings at 2,000 rpm.
- Meets the U.S. EPA Tier 3, European Union Stage III A and Japan MLIT Step 3 Emission regulations.
- Net flywheel power advertised is the power available at the flywheel when the engine is equipped with fan, air cleaner, muffler, and alternator.
- No derating required up to 3000 m (9,842 ft) altitude.

## Undercarriage

Track Shoe Width – Standard	480 mm	18.9 in
Track Shoe Width – Optional	380 mm	15 in
Track Gauge	1800 mm	71 in
Track on Ground	2320 mm	91.3 in
Ground Contact Area – Standard Shoe	1.8 m <sup>2</sup>	2,790 in <sup>2</sup>
Ground Contact Area – Optional Shoe	2.2 m <sup>2</sup>	3,410 in <sup>2</sup>
Ground Pressure – Standard Shoe	65.8 kPa	9.5 psi
Ground Pressure – Optional Shoe	84.1 kPa	12.3 psi
Track Shoe Type	Double Grouser	

## Weights

Operating Weight	15 595 kg	34,381 lb
------------------	-----------	-----------

- Operating Weight: Includes coolant, lubricants, 100% fuel tank, ROPS/FOPS cab, General Purpose Bucket with long bolt-on teeth and segments and 75 kg (165 lb) operator.

## Buckets

Capacity – GP Landfill	2.3 m <sup>3</sup>	3 yd <sup>3</sup>
Capacity – MP Landfill	2.1 m <sup>3</sup>	2.74 yd <sup>3</sup>
Width – GP Landfill	2458 mm	96.8 in
Width – MP Landfill	2536 mm	99.8 in

- Bucket width based on a bare bucket.

## Operating Specifications

Track on Ground	2320 mm	91.3 in
Ground Pressure	65.8 kPa	9.5 psi
Max Travel Speed	10 km/h	6.2 mph

## Service Refill Capacities

Fuel Tank	316 L	83.5 gal
Cooling System	31 L	8 gal
Crankcase (with Filter)	16.5 L	4.4 gal
Final Drives (each)	10.8 L	2.8 gal
Hydraulic Tank	70 L	18.5 gal

## Ripper

Type	Radial	
Number of Pockets	3	
Overall Width/Beam	1952 mm	76.9 in
Penetration	240 mm	9.45 in
Ripping Width	1800 mm	70.9 in

## Hydraulic System – Implement

Type	Close center load sensing/piston	
Output	140 L/min	30.8 gal/min
Main Relief Valve Setting	28 000 kPa	4,061 psi
Cycle Time – Raise	5.9 seconds	
Cycle Time – Dump	1.5 seconds	
Cycle Time – Float Down	3.2 seconds	
Total Cycle Time	10.6 seconds	

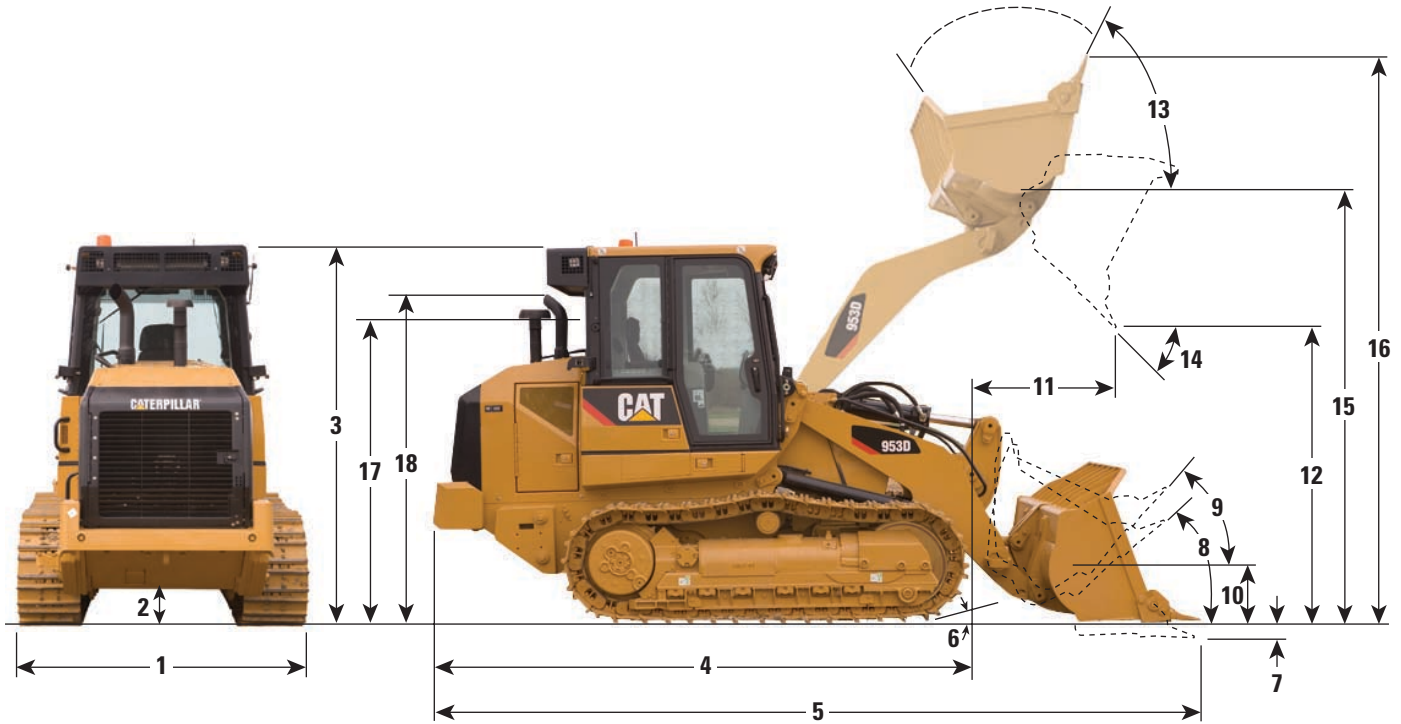
## Standards

- ROPS (Rollover Protective Structure) offered by Caterpillar for the machine meets ROPS criteria SAE J1040 MAY94, ISO 3471:1994 DLV criteria SAE J397B, ISO 3164:1995.
- FOPS (Falling Object Protective Structure) meets SAE J/ISO 3449 APR98 Level II, ISO 3449:1992 Level II, DLV criteria SAE J397B, ISO 3164:1995.
- Brakes meet SAE J/ISO 10265 MAR99, ISO 10265:1998.
- The operator sound exposure Leq (equivalent sound pressure level) measured according to the work cycle procedures specified in ANSI/SAE J1166 OCT98 is 79 dB(A), for cab offered by Caterpillar, when properly installed and maintained and tested with the doors and windows closed.
- The operator sound pressure level measured according to the procedures specified in ISO 6396:1992 is 74 dB(A) for the cab offered by Caterpillar, when properly installed and maintained and tested with the doors and windows closed.
- Hearing protection is recommended when operating with an open operator station and cab (when not properly maintained or doors/windows open) for extended periods or in noisy environment.
- The exterior sound pressure level for the standard machine measured at a distance of 15 m (49 ft) according to the test procedures specified in SAE J88 APR95, mid-gear-moving operation, is 76 dB(A).
- The labeled sound power level is 109 dB(A) measured according to the test procedure and conditions specified in 2000/14/EC.

# 953D Waste Handler Specifications

## Dimensions

All dimensions are subject to change without notice.



<b>1</b> Overall machine width without bucket:		
with standard tracks – 480 mm (19.7 in) shoes	2280 mm	89.7 in
with narrow tracks – 380 mm (14.9 in) shoes	2180 mm	85.8 in
<b>2</b> Ground clearance	416 mm	16.3 in
<b>3</b> Machine height to top of cab	3105 mm	122.2 in
<b>4</b> Length to front of track	4363 mm	171.7 in
<b>5</b> Overall machine length*	6252 mm	246.1 in
<b>6</b> Carry position approach angle		15°
<b>7</b> Digging depth*	140 mm	5.5 in
<b>8</b> Maximum rollback at ground		41°
<b>9</b> Maximum rollback at carry position		48°
<b>10</b> Bucket height in carry position	548 mm	21.6 in
<b>11</b> Reach at full lift height and 45° dump*	1195 mm	47 in
<b>12</b> Clearance at full lift height and 45° dump*	2694 mm	106 in
<b>13</b> Maximum rollback, fully raised		56°
<b>14</b> Maximum dump, fully raised		55°
Grading angle		74°
<b>15</b> Height to bucket hinge pin	3610 mm	142.1 in
<b>16</b> Overall machine height, bucket fully raised	4882 mm	192.2 in
<b>17</b> Height to top of seat with headrest	2560 mm	100.7 in
<b>18</b> Height to top of stack	2783.5 mm	109.6 in

\* With general purpose bucket and extra duty teeth.

Dimensions vary with bucket. Refer to Operating Specifications chart.

Standard equipment may vary. Consult your Cat dealer for details.

For standard equipment, please refer to the 953D Track Loader information.

## 953D WH Optional Equipment

Optional equipment may vary. Consult your Cat dealer for details.

### ELECTRICAL

Lights, 4, extra  
Beacon, rotating

### OPERATOR ENVIRONMENT

Control, joystick, MP bucket  
Control, two levers, GP bucket  
Comfort seat, air suspended, heated  
Cab window, front sealed  
Cat Messenger

### POWER TRAIN

Fan, demand, reversible  
Tank fuel, fast fill  
Air inlet, pre-cleaner, turbine

### HYDRAULICS

Hydraulic oil, bio  
Oil change, high speed  
Hydraulics MP Bucket, lines front  
Hydraulics RIPPER, control, lines rear  
Hydraulics MP + RIPPER, lines front and rear

### REAR ATTACHMENT

Striker bar, rear  
Ripper, multi-Shank  
Hitch, standard  
Hitch, extended  
Counterweight, light  
Counterweight, additional

### BUCKETS

General Purpose, for bolt-on GET  
General Purpose, flush mounted adapt  
Multi-Purpose  
Multi-Purpose, landfill  
General Purpose, landfill, flush mounted adapt  
General Purpose, landfill and demolition

### BUCKET ATTACHMENTS

Teeth, Extra Duty  
Teeth, General Duty  
Teeth, Penetration  
Bolt On, Cutting Edge  
Bolt On Segments, Cutting Edge  
Cutting Edge Segment  
Tips, Extra Duty

### GUARDS

Guard, track roller  
Guard, idler  
Guard, cab lights  
Guard, lift lines  
Screen, windshield  
UNDERCARRIAGE  
Track shoes, 380 mm (15 in), double grouser  
Track shoes, 480 mm (19 in), center hole  
Track shoes, 480 mm (19 in), double grouser  
Track shoes, 800 mm (31 in), Wide Gauge  
Final drive, waste  
Undercarriage, 2100 mm (83 in), Wide Gauge

### OTHER ATTACHMENTS

Cab, tilt jack, hydraulic  
Radio, AM/FM, CD  
Heather, engine coolant, 120V  
Heather, engine coolant, 240V  
Re-fueling pump  
Sediment pump, fuel tank  
Cat Product Link  
Antifreeze, - 50° C (-58° F)

# 953D Waste Handler

For more complete information on Cat products, dealer services, and industry solutions, visit us on the web at [www.cat.com](http://www.cat.com)

© 2009 Caterpillar Inc.  
All rights reserved

Materials and specifications are subject to change without notice. Featured machines in photos may include additional equipment. See your Caterpillar dealer for available options.

CAT, CATERPILLAR, SAFETY.CAT.COM, their respective logos, "Caterpillar Yellow" and the "Power Edge" trade dress, as well as corporate and product identity used herein, are trademarks of Caterpillar and may not be used without permission.

AEHQ6062 (09-2009)

Replaces AEXJ0015

**CATERPILLAR**<sup>®</sup>