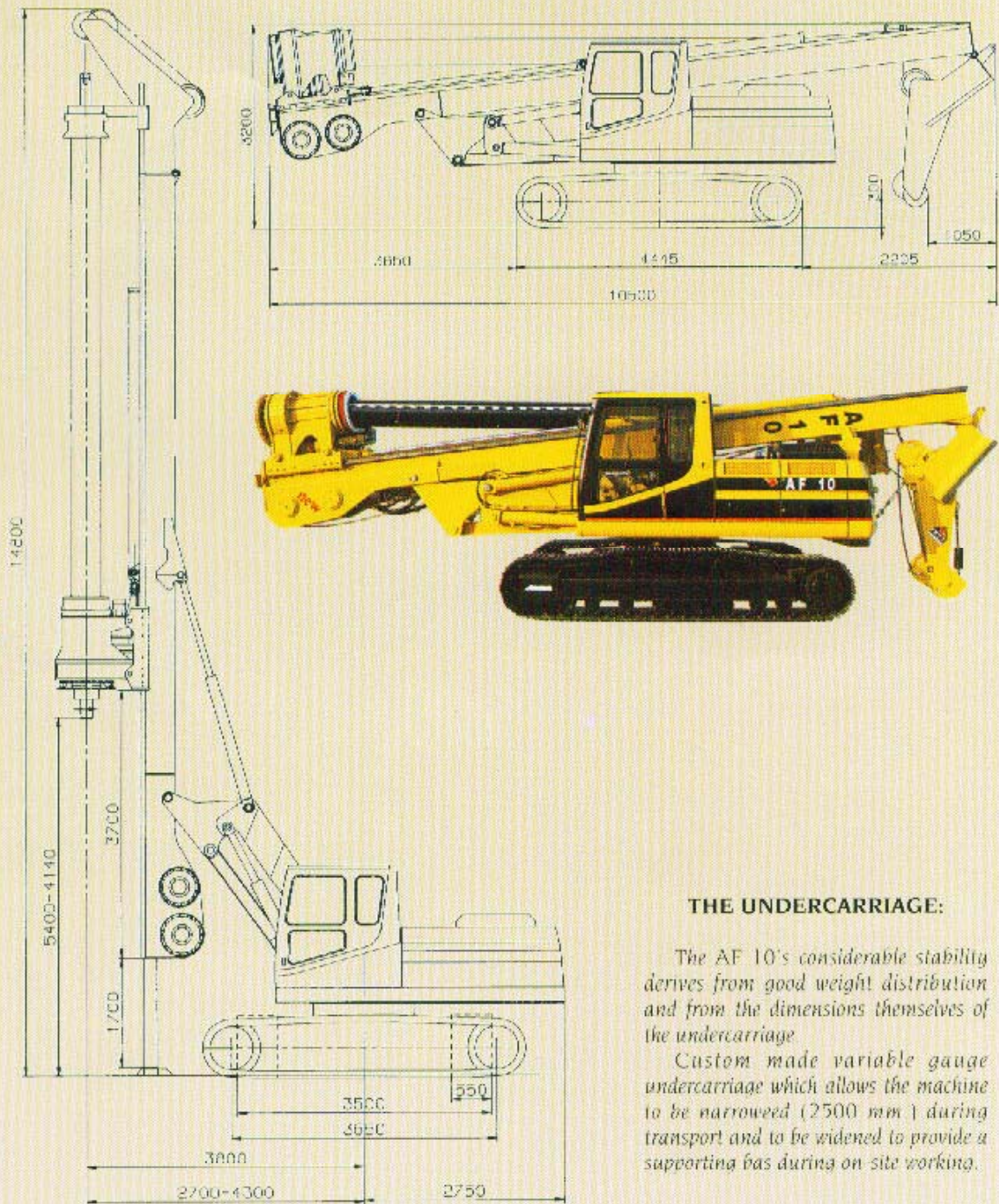




AF 10







**THE UNDERCARRIAGE:**

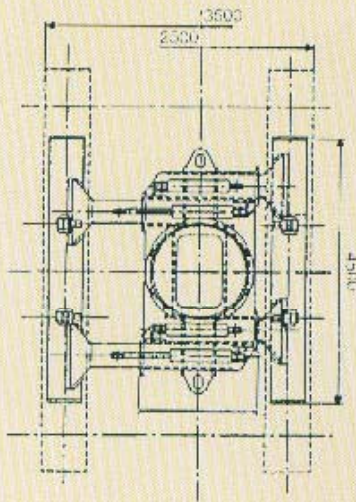
The AF 10's considerable stability derives from good weight distribution and from the dimensions themselves of the undercarriage.

Custom made variable gauge undercarriage which allows the machine to be narrowed (2500 mm) during transport and to be widened to provide a supporting base during on-site working.

BASE MACHINE	
BASE CARRIER	CATERPILLAR 320 L
ENGINE	CAT 3066 I
POWER	106 Kw - 145 HP
ROTATION SPEED	2000 rpm
HYDRAULIC SYSTEM	
Main Pump (Hydraulic oil flow)/Pressure	2 x 185 L/min - 350 bar
Service Pump (Hydraulic oil flow)/Pressure	1 x 80 L/min - 320 bar
CRAWLER SPEED (max.)	3 - 5 Km/h
UNDERCARRIAGE	Extensible tracks, class D5
LENGHT OF CRAWLERS center/center	3646 mm
OVERALL CRAWLERS LENGHT	4445 mm
STANDARD WIDTH OF TRACK SHOES	550 mm
WIDTH IN WORKING POSITION	3500 mm
WIDTH IN TRANSPORT POSITION	2500 mm
HEIGHT IN TRANSPORT POSITION	3200 mm

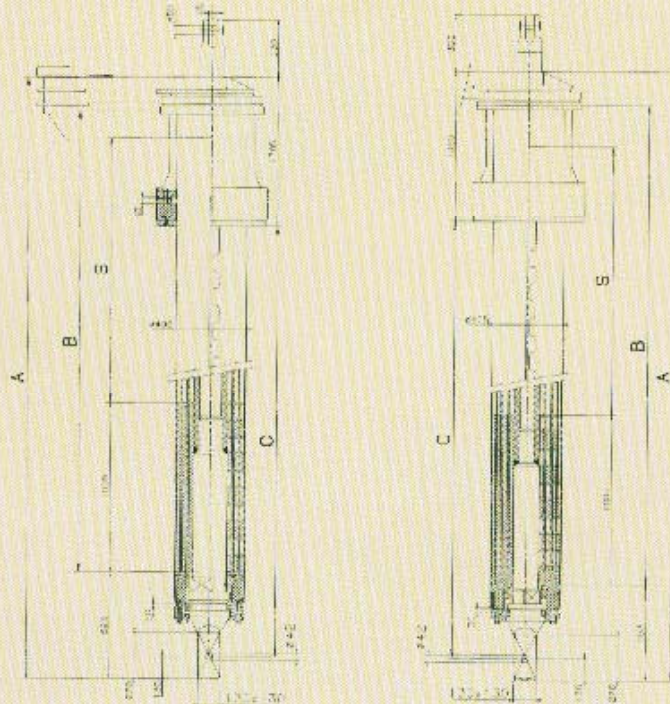


# TECHNICAL DATA



Four hydraulic cylinders are used for the telescopic unthreading of the tracks which increase the width by 1.000 mm. to the standard support size of 3.500 mm

The length of the tracks is also considerable. (4.445 mm )



## DRILLING DEPTH (with tool 1,5 m high and high boom)

No. Telescopic Bars/Nominal Depth	LENGHT A mm	PIPE B mm	C mm	STROKE S mm	MAX DEPTH m	WEIGHT (t)
5/35	8600	7800	7580	6575	35	4,5
5/42	10600	9800	9600	8575	42	5,2

## STANDARD DRILLING EQUIPMENT

Push Pull System on the rotary		Cylinder	
Rotary	max torque rotation speed discharge speed	102 kNm 7 - 27 rpm 35 - 110 rpm	
Mast Height	horizontal adjustment cylinders retracted	15 m	
Main Winch	pulling force (in kN) max. line speed (m/min) rope diam. (mm)/length (m)	140 80 22/62,5	
Auxiliary Winch	pulling force (in kN) max. line speed (m/min) rope diam. (mm)/length (m)	75 80 18/65	
Pull-Down Cylinder	stroke length (m) = push down/pull (kN) pull-down speed (m/min)	3 7 = 150/180 0 10	
3 <sup>rd</sup> Winch (optional)	stroke length (m) crowd force push down/pull (kN)	/ / 150/150	
Oscillator Attachment (optional)		- Frame connection to the undercarriage - Hydraulic plant modification	
Max Drilling diameter (mm)	without casing with casing with oscillator	1500 1200 1200	
Casing Length max (mm)	without oscillator with oscillator	3500 2500	8500 8500
Weight (with standard Kelly bar)		38 tons	

Due to the IMT's policy of continuous development and improvement, the right is reserved to change the specifications without notice. - Credito ROSINI-SABBIONI