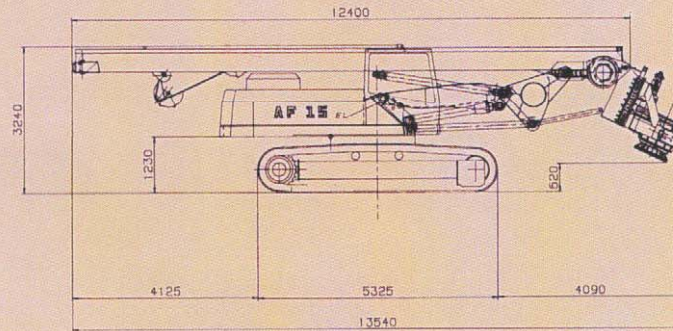
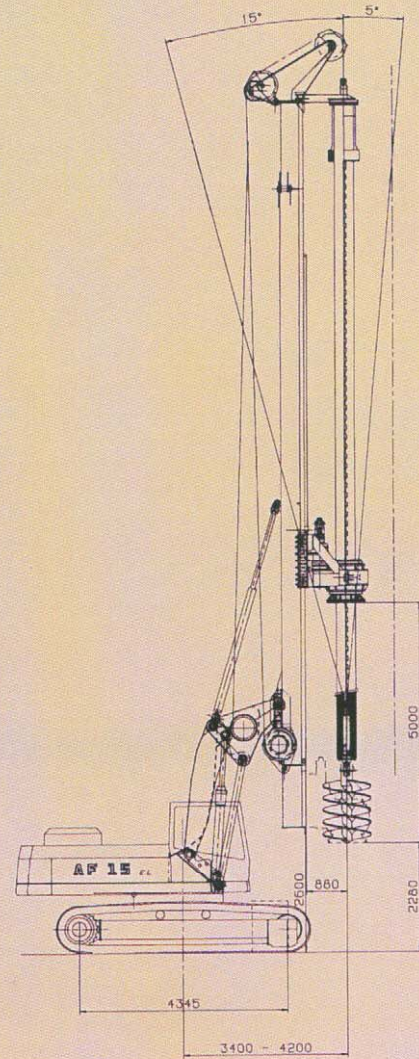
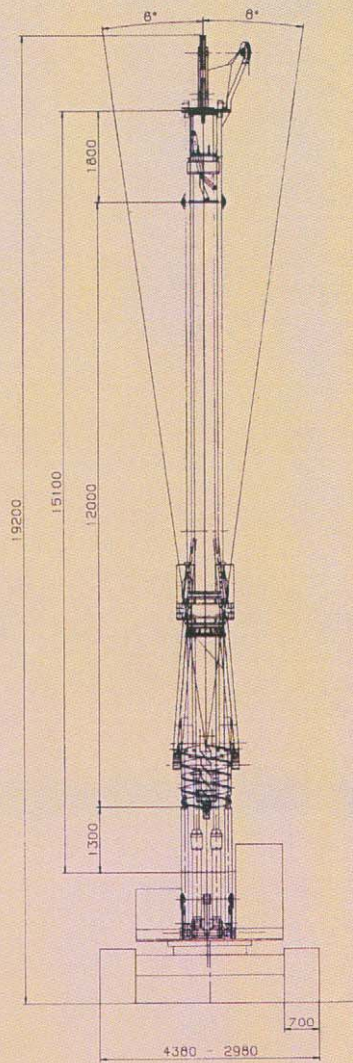




AF 15

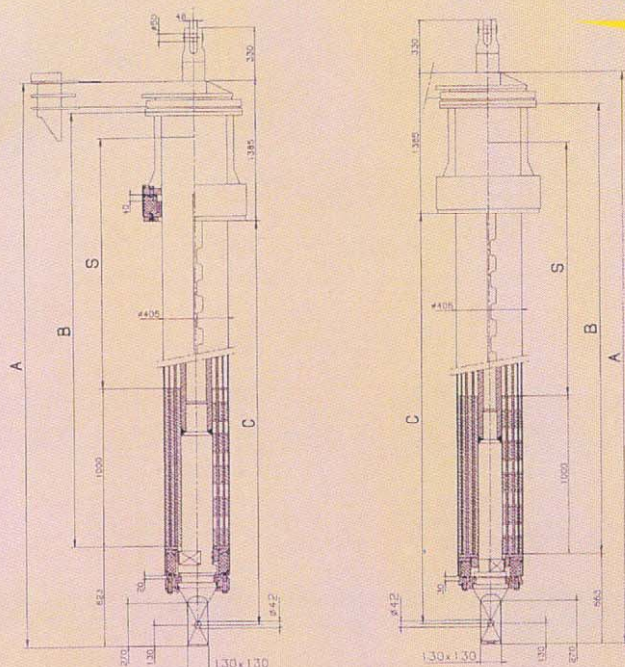




BASE MACHINE

BASE CARRIER	CATERPILLAR 330 EL
ENGINE	CAT 3306 TA
POWER	183 Kw - 250 HP
ROTATION SPEED	1800 rpm
HYDRAULIC SYSTEM	
Main Pump (Hydraulic oil flow)/Pressure	2 x 200 L/min - 350 bar
Service Pump (Hydraulic oil flow)/Pressure	1 x 100 L/min - 320 bar
CRAWLER SPEED (max.)	2,7 - 4,5 Km/h
UNDERCARRIAGE	Extensible tracks, class D7, traction force 340-400 kN
LENGTH OF CRAWLERS center/center	4060 mm
OVERALL CRAWLERS LENGTH	5040 mm
STANDARD WIDTH OF TRACK SHOES	700 mm
WIDTH IN WORKING POSITION	4400 mm
WIDTH IN TRANSPORT POSITION	3000 mm
HEIGHT IN TRANSPORT POSITION	3260 mm

TECHNICAL DATA



DRILLING DEPTH (with tool 1,5 m high and high boom)

No. Telescopic Bars/Nominal Depth	LENGTH A mm	PIPE B mm	C mm	STROKE S mm	MAX DEPTH m	WEIGHT (t)
4/35	10955	10135	9940	8975	35,2	5,9
4/42	12550	11730	11535	13570	41,6	6,6
4/46	13550	12730	12535	11570	45,6	7,2
5/45	10990	10230	9980	8975	44,2	5,6
5/54	12585	11825	11575	10570	52,2	6,3
5/60	13980	13200	12970	11965	59,2	7,0

$$M.D. = C - 3150 + 1500 + S (N-1)$$

STANDARD DRILLING EQUIPMENT

Push-Pull System on the rotary		Cylinder
Rotary	max torque rotation speed discharge speed	156 kNm 8 - 30 rpm 40 - 110 rpm
Mast Height	horizontal adjustment cylinders retracted	19 m
Main Winch	pulling force (in kN) max. line speed (m/min) rope diam. (mm)/length (m)	160 90 26/90
Auxiliary Winch	pulling force (in kN) max. line speed (m/min) rope diam. (mm)/length (m)	80 90 18/85
Pull-Down Cylinder	stroke length (m) = push down/pull (kN) pull-down speed (m/min)	5 = 165/180 0 - 9
3 th Winch	stroke length (m) crowd force push down/pull (kN)	Optional
Oscillator Attachment (optional)		- Frame connection to the undercarriage - Hydraulic plant modification
Max Drilling diameter (mm)	without casing with casing with oscillator	1800 1500 1500
Casing Length max (mm)	without oscillator with oscillator	4500 4500
Weight (with standard Kelly bar)		56 tons



IMT srl • INDUSTRIA MECCANICA TRIVELLE
Via d'Ancona, 39 - Osimo (AN) - Italy
Tel. 071-714645 r.a. - Fax 071-7133352