

KELLY TRACTOR



2019



**Quality In
Construction
Equipment**



Sales 305-592-0556 • Fax 305-463-6063
Parts: 305-592-7763 • Fax: 305-463-6066

www.kellytractor.com

KELLY TRACTOR

Dear Kelly Tractor Co. Customer,

From farm tractors, backhoe loaders, forklifts, cranes, drill rigs and portable work tools, and much more, our new equipment catalog showcases a wide variety of machines from some of the world's foremost manufacturers.

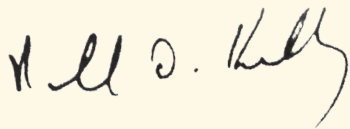
Kelly Tractor Co.'s commitment to the construction and farming markets spans 81 years, providing our customers with top equipment at a reasonable prices backed by our outstanding dealer support. Our origins started with the farming community back in 1933 in Clewiston, Florida with our first store and to this day, we have a very dedicated agricultural division based in Ft Myers and Clewiston. We also have supported the South Florida construction market in providing our customers total equipment solutions to keep their businesses running profitably and efficiently.

While quality equipment and a dedicated product support team are Kelly Tractor Co. traditions, we're also proud to support the construction and farming industries by encouraging young people to consider a career in construction and farming.

As we keep an eye on meeting the demands of the future, we know that your biggest priority is the work that needs to get done today. With that in mind, we've designed this catalog to serve one important mission: ***Provide a one-stop source of the equipment and tools you need to boost productivity, reduce downtime and cut operating costs on the projects at hand.***

Here to always being "well equipped" for success!

Sincerely,



Nicholas D. Kelly
Executive Vice President



KELLY TRACTOR

www.kellytractor.com

Quality you Can Trust

Product Line



Table of Contents

CONSTRUCTION PRODUCTS

WACKER

Vibratory Plates, Single Direction2
 Reversible Plates/Rammers3
 Rollers and Dumpers.....4
 High Frequency Internal Vibrators
 Vibrator Heads/Flexshafts5
 Rebar Tier/Rebar Cutter6
 External Vibrators7
 Internal Vibrators8
 Wet Screenshot9
 Trowels10
 Light Towers/Light Balloons11
 Portable Generators12
 Mobile Generators.....13
 Pumps14

UTILITY LOADERS

SULLAIR

Portable Compressors15

SULLIVAN PALATEK

Tampers and Hammers
 Diggers and Breakers
 Drills and Drivers 16-18

METSO

Crushers and Screens 19-20

MAULDIN

Compact Paving Products21

BROCE BROOM

Sweepers.....22

DRILLS

IMT

Drilling Rigs 23

CRANES

LINK-BELT

Rough Terrain/Hydraulic Cranes
 Lattice Boom Crawlers.....24-25

LIFT TRUCKS

CAT®

Used Equipment.....26
 Product Support/Parts27
 Used parts.....28
 CAT® Lift Trucks 29-31

HARLO

Forklifts.....32

JUNGHEINRICH

Industrial Products33

LANDOLL/BENDI

Lifts/Booms/Scissor Lifts 34-35

GENIE

Lifts, Booms, Scissor Lifts..... 36-37

JLG

Aerial Work Platforms 38-40

KELLY TRACTOR

Used Forklifts41

AGRICULTURAL TRACTORS

MASSEY FERGUSON

Agricultural Tractors 42-45

CHALLENGER

Agricultural Tractors 46-48

ROGATOR/TERRAGATOR

Agricultural Tractors 49

DIAMOND MOWERS

Boom Mowers 50

AG ATTACHMENTS

WOODS EQUIPMENTS

Mowers, Cutters, Steer Augers 51-52

SMITH CHALLENGER

Heavy Duty Broom Tractors 53-55

ABI

Irrigation Equipment 56-57

SUNFLOWER

Harrows58

DEGELMAN

Dozer Blades, Manure Spreader,
 Prong picker, Rock Digger,
 Rock Rake, Signature Rock Pickers
 59-61

ROME

Plows..... 62

FORESTRY

MARDEN INDUSTRIES INC.

Brush and Weed Cutters
 Pasture Renovators
 Forestry Implements..... 63-64

SUPERTRAK, INC.

Forestry Tractors65

TRAILERS

BELSHE

Trailers66

INTERSTATE

Trailers67

TOWMASTER

Trailers68

FELLING

Trailers 69-74

CAT®

..... 75-79

KELLY TRACTOR

ORDERING INFORMATION

..... 80-81

Notes 82-83



WACKER
NEUSON

SINGLE DIRECTION VIBRATORY PLATES (50-110 lbs)

Single Direction Soil

Vibratory plates have set the standard for the industry in confined area compaction of sand, gravel and crushed aggregate, as well as hot and cold asphalt. These vibratory plates are ideal for backfill trenches, slab base preparation, curbs and gutters. Wacker plates can compact 10 to 40 inch lifts of soil.

Model	Oper. Wt (lb)	Operating Width & Height (in)	Cent. Force (lb)	Surface Capacity (soil) ft ² /h	Advance Travel (ft/min)	Engine Manufacturer
VP 1135A	137	14 x 25	2,470	5,800	95	Honda
VP 1340	163	15.5 x 26.5	2,925	5,800	84	Wacker Neuson
VP 1340A	163	15.5 x 23	2,925	5,900	84	Honda
VP 1550	184	19.5 x 23	4,500	6,600	67	Wacker Neuson
VP 1550A	184	19.5 x 23	4,500	6,600	67	Honda
VP 2050	103	20 x 23	4,500	7,880	88	Wacker Neuson
VP 2050A	103	20 x 23	4,500	7,880	88	Honda
WP 1540	190	15.5 x 20	3,375	6,590	100	Wacker Neuson
WP 1540A	185	15.2 x 23	3,375	6,590	85	Honda
WP 1550	194	19.5 x 23	3,375	9,750	100	Wacker Neuson
WP 1550A	190	19.5 x 23	3,375	9,750	100	Honda



VP 1550A

VIBRATORY PLATES: Single Direction Asphalt

Model	Oper. Wt (lb)	Operating Width & Height (in)	Cent. Force (lb)	Surface Capacity (soil) ft ² /h	Advance Travel (ft/min)	Engine Manufacturer
VP 1135AW	137	14 x 25	2,470	5,800	95	Honda
VP 1340W	163	15.5 x 26.5	2,925	5,800	84	Wacker Neuson
VP 1340AW	163	15.5 x 23	2,925	5,900	84	Honda
VP 1550 W	184	19.5 x 23	4,500	6,600	67	Wacker Neuson
VP 1550A W	184	19.5 x 23	4,500	6,600	67	Honda
VP 2050 W	103	20 x 23	4,500	7,880	88	Wacker Neuson
VP 2050A W	103	20 x 23	4,500	7,880	88	Honda
WP 1540W	190	15.5 x 20	3,375	6,590	100	Wacker Neuson
WP 1540AW	185	15.2 x 23	3,375	6,590	85	Honda
WP 1550W	194	19.5 x 23	3,375	9,750	100	Wacker Neuson
WP 1550AW	190	19.5 x 23	3,375	9,750	100	Honda



WP 1550A



WACKER
NEUSON

REVERSIBLE VIBRATORY PLATES

Reversible vibratory plates are ideally suited for compaction in confined spaces of granular and mixed soils such as utility trenches and along highways, dams, parking areas, airports, bridge construction, railroad beds, foundations, walls and abutments.

Model	Oper. Wt (lb)	Operating Width & Height (in)	HP	Surface Capacity (soil) ft ² /h	Frequency Hz	Engine Manufacturer
BPU 2540A	309	15.8 x 26	5.5	5,425	90	Honda
BPU 3050A	366	19.7 x 27.5	9.0	6,781	90	Honda
BPU 3050H	386	19.7 x 29.8	6.8	6,781	90	Hatz
BPU 3750A	529	19.7 x 29.4	8.0	8,073	90	Honda
BPU 3750H	545	19.7 x 29.8	6.8	8,719	90	Hatz
BPU 4045A	710	17.7 x 35.4	8.0	9,300	69	Honda
DPU 4545He	893	17.7 x 35.4	9.4	9,687	69	Hatz
BPU 5545He	714	15.7 x 35.4	7.2	10,462	69	Honda
DPU 6555He	1060	21.7 x 35	9.6	12,917	69	Hatz
DPU 6555Hec	1064	21.7 x 35	9.6	12,917	69	Hatz
DPU 100-70Les	1,654	27.6 x 42.2	13.5	13,875	56	Kohler
DPU 130	2,613	N/A	21.5	24,025	N/A	Kohler

DPU 100-70Les



BPU 4045A

VIBRATORY RAMMERS

Vibratory rammers are ideal for compaction of cohesive, granular and mixed soils around foundations, columns, trench backfill, and wherever compaction is needed. These rammers combine a long shoe stroke with high impact compaction up to 25" (71 cm) lift. Ideal for use for building construction, highway and road construction, civil engineering projects, utilities and municipalities.

Model	Oper. Wt (lbs)	Ramming Shoe Size (W X L)	HP @4,400 rpm	Operating speed Travel Speed (ft/min)	Surface capacity Compaction (ft ² /h)	Engine Manufacturer
BS 50-2	129	9.8 x 13	2.2	25	1,274	Wacker Nueson
BS 50-2i	131	11 x 13	2.2	31	1,710	Wacker Nueson
BS 60-2i	145	11 x 13	2.4	32	1,763	Wacker Nueson
BS 70-2i	164	11 x 13	2.7	29	1,598	Wacker Nueson
BS 50-4s	139	11 x 13.3	3.2	26	1,428	Wacker Nueson
BS 60-4s	157	11 x 13.2	3.2	28	1,543	Wacker Nueson
DS 70*	183	11 x 13	4.1	43	1,598	Yanmar



BS 50-2

*- Diesel



WACKER NEUSON

VIBRATORY ROLLERS

Ride On Rollers – Offer articulated hydrostatic drive, extreme maneuverability and high curb clearance. The model RD-12 features fuel efficient diesel power, two-speed operation and a water sprinkling system for asphalt.

RD 12



RD 27-100



Model	Oper. Wt with 175lb operator	Drum width & Diameter (in)	HP	Cent. Force Front Drum (lbf)	Frequency VPM	Surface Capacity (ft ² /h)	Engine Manufacturer
RD-12-90	2,491	35.4 x 22	20.5	3,400	70	84,281	Wacker Neuson
RD 12A-90	2,498	35.4 x 22	20.3	3,400	70	84,281	Honda
RD 16-90	3,274	35.4 x 22	22.5	3,400	70	90,094	Kohler
RD 16-100	3,351	39.4 x 22	22.5	3,400	65	100,104	Kohler
RD 27-100	5,770	39.4 x 27.6	32.7	5,328	66	107,639	Perkins
RD 27-120	6,226	47.2 x 27.6	32.7	6,475	66	129,167	Perkins

Functionality and ergonomics provides operator comfort and high productivity.

These mid-sized dumper features metric to payload capacity, power swivel material handling and hydrostatic permanent four wheel drive as a standard. The hydrostatic drive system offers user-friendly controls eliminating the need to change gears. The Wacker Neuson Wheel Dumper offers superior performance.

1501



Model	HP	Travel Speed (mph)	Payload (lbs)	Net Weight (lbs)
1500	23	10	3,307	2,910
3001	34	14	6,614	5,578
6001	65	16		11,023



WACKER NEUSON

INTERNAL VIBRATORS MODULAR INTERNAL VIBRATORS

Economical Concrete Consolidation for every need

The electrical driven HMS system is extremely versatile. These high frequency flex-shaft internal vibrators can be adapted to every type of application. Heads and shafts can be easily combined and rapidly exchanged to match the right equipment to the job. Unique hybrid heads offer optimum concrete consolidation and movement. WACKER Neuson internal vibrators provide reliable performance and quality concrete.



M2000

Electric Motors	Voltage1~V	Power kW (hp)	Weight (lb)	L x W x H (in)	Power Cable (ft)
M 1000	115	1.0 (1.3)	11.7	13.8 x 6.3 x 7.9	2
M 2000	115	1.7 (2.3)	13.1	13.8 x 6.3 x 7.9	2
M 3000	115	2.3 (3.1)	17.8	13.8 x 6.3 x 7.9	2

Gasoline Engines	Engine/Motor	Power kW (hp)	Weight (lb)	L x W x H	Tank Capacity (US qt)
A 1500/35	air cooled Honda 4 stroke	1.0 (1.3)	23.40	16.7 x 10.8 x 15.9	0.6
A 5000/160		4.0 (5.4)	52.0	22.3 x 16.6 x 15.2	3.8

Flexible shafts	SM-1	SM2-E	SM4-E
Weight (lb)	3.3	5.5	9.5
Length (In)	36	78	156

Flexible shafts	SM0-S	SM1-S	SM2-S	SM3-S
Weight (lb)	2.9	6	9.5	13
Length (In)	18	36	78	120

Flexible shafts	SM4-S	SM5-S	SM7-S	SM9-S
Weight (lb)	15.7	20.5	28.4	33.3
Length (In)	156	198	276	360

VIBRATOR HEADS

Vibrator Heads - standard and rubber coated

	H65	HR 48	HR 65	HR 70	HR 70S
Diameter (in)	2.5	1.89	2.5	2.75	2.75
Weight (lb)	15	6	8.4	11	6
Length (in)	15.3	14	15	15	6

Vibrator heads - short

	H25S	H35S	H 45S
Diameter (in)	1	1.4	1.8
Weight (lb)	1.8	3.6	6.2
Length (in)	11.7	12.3	12

Vibrator heads - Hybrid

	H 25A	H 35HA	H 45HA	H 50HA
Diameter (in)	1	1.4	1.8	2
Weight (lb)	2.6	4.4	6.8	7.9
Length (in)	15	15.9	15.4	15.6



H25A

FLEXSHAFTS FOR INTERNAL VIBRATORS

Model	SM OS	SM 1E	SM 2E	SM 3S	SM 4E	SM 5S	SM 7S	SM 9S
Length (ft)	1.5	3	6.5	10	13	16.5	23	30
Weight (lbs)	2.9	3.3	5.5	13	10	20.5	28.4	33.3



Flexshafts / Internal Vibrators / Vibrator Heads



Model	L X W X H Extended (in)	Weight lbs (kg)	Tray
DF 16 Rebar Tier	34.8 x 4.7 x 6.5	4.9 (2.2)	77 ties per strip

COMPATIBILITY CHART

	Model	SM2-E	SM4-E									
H25	M1000	Acceptable	Acceptable	Acceptable	Acceptable	Acceptable	Acceptable	Acceptable	Acceptable	Acceptable	Acceptable	Acceptable
	M2000	Not Recommended	Not Recommended	Not Recommended	Acceptable	Acceptable	Acceptable	Acceptable	Acceptable	Acceptable	Acceptable	Acceptable
	M3000	Not Recommended	Not Recommended	Not Recommended	Acceptable	Acceptable	Acceptable	Acceptable	Acceptable	Acceptable	Acceptable	Acceptable
H35	M1000	Acceptable	Acceptable	Acceptable	Acceptable	Acceptable	Acceptable	Acceptable	Acceptable	Acceptable	Not Recommended	Not Recommended
	M2000	Acceptable	Acceptable	Acceptable	Acceptable	Acceptable	Acceptable	Acceptable	Acceptable	Acceptable	Acceptable	Acceptable
	M3000	Acceptable	Acceptable	Acceptable	Acceptable	Acceptable	Acceptable	Acceptable	Acceptable	Acceptable	Acceptable	Acceptable
H45	M2000	Acceptable	Acceptable	Acceptable	Acceptable	Acceptable	Acceptable	Acceptable	Acceptable	Acceptable	Acceptable	Acceptable
	M3000	Acceptable	Acceptable	Acceptable	Acceptable	Acceptable	Acceptable	Acceptable	Acceptable	Acceptable	Acceptable	Acceptable
H55	M1000	Acceptable	Acceptable	Acceptable	Acceptable	Acceptable	Acceptable	Acceptable	Acceptable	Acceptable	Acceptable	Acceptable
	M1000	Acceptable	Acceptable	Acceptable	Acceptable	Acceptable	Acceptable	Acceptable	Acceptable	Acceptable	Acceptable	Acceptable
H65	M2000	Acceptable	Acceptable	Acceptable	Acceptable	Acceptable	Acceptable	Acceptable	Acceptable	Acceptable	Acceptable	Acceptable
	M3000	Acceptable	Acceptable	Acceptable	Acceptable	Acceptable	Acceptable	Acceptable	Acceptable	Acceptable	Acceptable	Acceptable

Acceptable Combination
 Not Recommended
 Do Not Use

Rebar Cutter and Bender

Model	Weight (lb)	Cutting Diameter (in)	Cutting Speed (sec)
RCE Range			
RCE 16	15.7	0.6	5
RCE 20	22.0	0.8	5
RCE 25	30.4	1.0	5
RCP Range			
RCP 12	14.8	0.5	5
RCP 16	20.1	0.6	4
RCP 20	30.2	0.8	5
RCP 25	30.6	1.0	5.5
RCP 32	59.5	1.3	6



WACKER NEUSON

EXTERNAL VIBRATORS 6000 RPM Concrete Vibrator for Exposed Surfaces (6000 1/min)

The concrete vibrator is hard to beat when it comes to quality surfaces or special designs.

The performance of these vibrators has to be seen to be delivered. Specifically designed for visible, quality concrete, this vibrator not only provides optimum surfaces but it also achieves outstanding compaction within the construction element itself. The low weight and its compact size make it perfectly suited for all types of special construction designs.

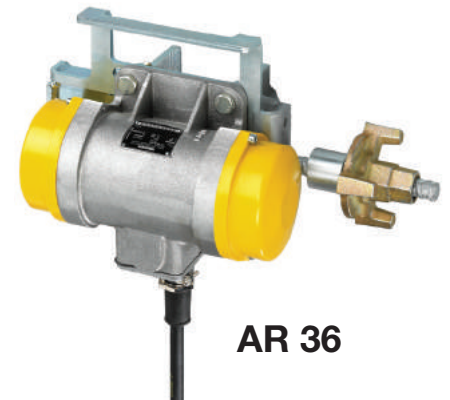
External Vibrators for the production of fairfaced concrete

External vibrators for quality concrete consolidation

AR 36	AR 36/3.6/115W	AR 36/6/41.5
Vibrations rpm	3,600	6,000
Centrifugal force max (lbf)	667.7	780
Rated Voltage 1~V	115	41.5
Rated current A	3.5	9
Weight (lbs)	14.6	12.1
Power Cable (ft)	0	32.8
L x W x H	N/A	9.1 x 8.9 x 4.1
Standard centrifugal force (lbf)	564.3	487.8

External vibrator with integrated frequency converter

ARFU 36/6/115	
Vibrations rpm	6000
Centrifugal force max (lbf)	780.1
Rated Voltage 1~V	115
Rated current A	12 A
Weight (lbs)	31.3
Power Cable (ft)	49.2
L x W x H	9.1 x 8.9 x 4
Standard centrifugal force (lbf)	487.8



AR 36

EXTERNAL VIBRATORS 3600 RPM PNEUMATIC EXTERNAL VIBRATORS AR

These vibrators offer continuous vibration without electrical current. The AR series of pneumatic external vibrators offers continuous vibration for non-stop applications. They owe their durability to their strong and simple design. Their low maintenance requirements and their long service life. They are the first choice when electricity is not readily available.

External Vibrators for precast segment production

	Vibrations (rpm)	Centrifugal Force	Fastening
AR 26	6,000	781 lbf	Flange
AR 36	6,000	781 lbf	Flange
AR 51	3,600	1,920 lbf	Base plate taper pin
AR 75	3,600	3,867 lbf	Flange
ARFU 36	6,000	780.1 lbf	Flange



WACKER
NEUSON

ELECTRIC INTERNAL VIBRATORS

Nothing upsets these internal vibrators with integrated inverters because the motor speed remains constant no matter what the properties of the freshly mixed concrete. The result: a job uniformly well done. In addition, they prove their worth with maximum compaction diameter and topmost compaction performance. Because arising electrical currents, which could endanger the operator, are switched off so quickly (< 2ms) by the IRFUN, safety is uncompromised and they are also short circuit proof.

Powerful and reliable high frequency internal vibrators with an integrated motor in the vibrator head. The housing has been specially designed for the professional vibration of fresh concrete, above all for concrete of the consistency classes F2 (plastic consistency) and F3 (standard consistency). This type of equipment is ideal for the applications in building and civil engineering sites and any other job that requires an economic and profitable compaction.



High Frequency internal vibrators with integrated converter

Model	Dia of Vib head (in)	Length of Vib head (in)	Weight of Vib head (in)	Operating Weight (lbs)	Vibrations (rpm)	Voltage**1~V
IRFU 30	1.2	13.8	3.1	25.4	12,000	120
IRFU 38	1.4	13.6	4.9	30.0	12,000	120
IRFU 45	1.8	15	7.7	32.2	12,000	120
IRFU 57	2.2	15.8	12.8	43.7	12,000	120
IRFU 60HR	2.6	16.3	13.7	48.1	12,000	120
IRFU 65	2.6	19.3	20.3	56.2	12,000	120

High Frequency internal vibrators with integrated frequency converter

Model	Dia of Vib head (in)	Length of Vib head (in)	Weight of Vib head (in)	Operating Weight (lbs)	Vibrations (rpm)	Voltage**1~V
IRSE-FU 45	1.8	15.0	7.7	33.1	12,000	220-240
IRSE-FU 57	2.2	15.8	12.8	37.48	12,000	220-240

ELECTRIC INTERNAL VIBRATORS

These products offer continuous vibration without electric current. There is no questioning the long service life and long-term operating power of WACKER Neuson external vibrators. Offering maximum performance under the most extreme applications with continuous operation. The vibration-proof and heat-resistant coils in the electric motor as well as the special heavy-duty bearings provide for durability and reduced maintenance.



Pneumatic External Vibrators (PAR)	PAR 6/2	Par 10/2	Par 27/2	Par 45/2
L x W x H (with mounting device) In	6.4 x 7.5 x 5.5	6.4 x 7.5 x 5.5	7.1 x 9.5 x 8.5	7.1 x 9.5 x 8.5
Weight (without mounting device) lb	13.9	15.9	33.7	36.4
Vibrations rpm	17,000	16,500	16,000	8,500
Centrifugal Force (lbf)	1,349	2,248	6,070	10,116
Drive	Compressed air	Compressed air	Compressed air	Compressed air
Operating Pressure (psi)	87	87	87	87
Air Consumption (ft3/min)	35.3	38.9	55.8	58.6



WACKER NEUSON

WET SCREEDS

Vibratory screeds offer both reliable performance and operator comfort.



VIBRATORY SCREED



	Weight (lbs)	Engine /Motor	Engine Manufacturer	Displacement (in3)
P 35A	34.2	Air-cooled	Honda	2.2

4-8 ft (1200-2400 mm) blade lengths

	SB-4F	SB 15M	SB 6F	SB 20M	SB 8F
Weight (lbs)	8.4	10.1	11.90	13.4	16.8
Length (in)	47.2	59.1	70.9	78.7	94.4
Width (in)	6.5	6.5	6.5	6.5	6.5

10-16 ft (3,000-4900 mm) blade lengths

	SB 10F	SB 12F	SB 14F	SB 16F
Weight (lbs)	8.4	10.1	11.90	13.4
Length (in)	47.2	59.1	70.9	78.7
Width (in)	6.5	6.5	6.5	6.5

Wet Screeds, Gas Breakers

BTS 630



GAS BREAKERS

Cut or trim beams, brick slabs, curbstones, expansion joints, concrete or asphalt openings, steel rods and grinders with BTS series of portable cut-off saws. Applications for municipalities include steel rod and tile cutting are ideal for fire or rescue work.

Model	Oper. Wt (lb)	HP	Cutting Depth (in)	Blade Speed (rpm)	Arbor Size (in)
BTS 630	24.0	5.8	4.1	4,250	0.787
BTS 635s	24.9	5.8	5	4,240	1.0



WACKER
NEUSON

WALK BEHIND CONCRETE TROWELS

Walk behind power trowels incorporate the following handy features to speed the completion of projects, maintain uptime; width pitch control range of 0-15" which can be adjusted during operation of equipment; centrifugal clutch pulley that automatically adjusts for belt stretch, blade control and drive components that are heat treated and rust resistant for extra long life.



CT 36

Trowels

Model	Oper. Wt (lb)	Trowel Dia. (in)	No. Blades	Speed Range (rpm)	Pitch (degrees)
CT 24	160	24	4	90-141	0-15
CT 36 - 5A	183	36	4	60-125	0-30
CT 36-6	183	36	4	60-125	0-30
CT 36-8A	208	36	4	60-125	0-30
CT 36-9	199	36	4	60-125	0-30
CT 36-8A-V	208	36	4	25-200	0-30
CT 36-9-V	199	36	4	25-200	0-30
CT 48-8A	234	48	4	60-125	0-30
CT 48-9	227	48	4	60-125	0-30
CT 48-11A	250	48	4	60-125	0-30
CT 48-13A-V	268	48	4	25-200	0-30

RIDE-ON HIGH SPEED TROWELS

Versatile machine for high quality finishing

Wacker Neuson's easy to operate ride-on power trowels offer accurate and highly productive floating and finishing for large concrete surfaces and super flat floors. Ride-On Trowels offer a unique variable clutch that provides proper torque and speed range to match concrete conditions without mechanical adjustments.

CRT 48



Model	Oper. Wt (lb)	Trowel Diameter (in)	HP	Number of Blades	Speed Range (rpm)	Pitch (degrees)
CRT 36-25	835	36	25	8	3,600	0-25
CRT 36-26A	830	36	22.2	8	3,600	0-25
CRT v36-26A	817	36	22.2	8	3,600	0-25
CRT 48-33K	1,280	48	32.4	10	3,600	0-25
CRT 48-33K DF	1,343	48	32.4	10	3,600	0-25
CRT 48-35V	1,130	48	35.0	10	3,600	0-25
CRT 48-35L	1,340	48	34.9	10	3,600	0-25



WACKER
NEUSON

LIGHT TOWERS

The LTW Series of wide-body light towers combine superior job site lighting with various power options up to a 20kW in a rugged, heavy duty steel frame, wide track width, independent torsion axles and a heavy duty tongue and hitch assembly to ensure reliable off-road towing.

LTN 6K



Model	Engine	Mast Height (ft)	Illumination of Coverage at 5 fc (54 lux) ft ²	Voltage (V)	Lamp Type
LTN 6L	Kohler	30	12,960	120	Metal Halide
LTN 6C	Caterpillar	30	12,960	120	Metal Halide
LTN 6K	Kubota	30	12,960	120/240	Metal Halide
LTN 8K	Kubota	30	12,960	0.5	Metal Halide
LTN 6KV	Kubota	28.5	12,960	120	Metal Halide
LTN 8KV	Kubota	28.5	13,960	120	Metal Halide
LTW 6K	Kubota	30	12,960	120/240	Metal Halide
LTW 8K	Kubota	30	12,960	120/240	Metal Halide
LTW 20Z1	Isuzu	30	12,960	120/240	Metal Halide
LTW 20Z3	Isuzu	30	12,960	120/208	Metal Halide



Available With CAT® Diesel



LIGHT BALLOONS

Wacker Neuson's light balloon feature a compact design providing optimal brightness without glare. Ideally suited for general job site illumination, road work, indoor/outdoor illumination of concrete pours and party rentals. Light Balloons feature rugged, simple construction allowing for use almost anywhere a reliable light source is needed. A powerful and portable package to light your jobsite!

LBA 110M

LBS 110M



Model	L X W X H (in)	Height Max Balloon (ft)	Operating Weight (lbs)	Lamp Output W	Voltage (V)
LBS 110M	64 x 56 x 103	17.3	93.6	1,000	120
LBA 110M	39 x 39 x 28	27.6	56	1,000	120



PORTABLE GENERATORS

High Performance generators are designed for construction. Industrial, commercial, domestic and farm electrical applications.

Features and Benefits:

- Super quiet muffler
- 120/240V power switch provides a full 120V power or shared from both 120V and 240V receptacles ((G 3.7A and G/GS 5.6A only)
- Heavy-duty lightweight compact frame
- Integral lifting eye to accommodate 3" hook
- Magnetic circuit breaker
- Premium grade ground fault interrupter (GFI)
- Overhead valve engines with automatic decompression and maintenance-free electronic ignition
- Automatic low oil shutdown



GP 2500



GP 5600



GPS 9700

Model	Weight Dry (lb)	Electrical Power Max/Cont	AC Output Volt-Amp	Hz Frequency	HP	Engine Manufacturer
GP 2500A	98	2,500/2,250	120V/18.8	60	4.8	Honda
GP 2600	105	2,600/NA	120V/18.8	60	5.6	Wacker Neuson
GP 3800A	167.8	3,800/3,400	120/240V 28.3/16A	60	7.1	Honda
GP 4000	152	4,000/3,600	120/240V 30/15A	60	9.0	Wacker Neuson
GP 5600A	196	5,600/5,000	120/240V 41.7/20.8A	60	10.7	Honda
GPS 5600A	209	5,600/5,000	120/240V/41.7/20.8A	60	10.7	Honda
GP 6600A	229.8	6,600/6,000	120/240V/50/25A	60	11.7	Honda
GPS 6600A	213	6,600/6,000	120/240V/50/25A	60	11.7	Honda
GPS9700V	221	9,700/9,300	120/240V/80.8/40.4A	60	18.0	B & S Vanguard



MOBILE GENERATORS

Heavy-duty, compact trailer and skid-mounted generators are designed to provide single and three-phased portable power for construction, commercial and industrial applications.

Features and Benefits

- Sound-attenuated lockable enclosure
- LCD digital meter control panel
- AC mounting panel
- Solid state voltage regulation
- Three-position voltage selector switch
- Brushless generator
- Multiple convenience outlets with circuit breakers
- Compression terminal lugs for direct wiring
- Automatic remote start
- Super quiet muffler
- Automatic engine shutdown
- Reliable liquid-cooled diesel engine
- Large capacity fuel tank
- Fully equipped highway ready trailer
- External coolant/oil drains
- Trailer mounted



G 70

Model	Oper. Wt (lbs) w/o Trailer/Trailer	Prime Output kW	Voltage AC Output	HP	HZ	Engine Manufacturer
G 14	1,603/1,951	13.5	120/240 V	24.3	60	Kubota
G 25	1,911/2,802	19.5	240/480V	35.4	60	Isuzu
G 50	3,178/4,663	38	240/480V	74.0	60	John Deere
G 70 (Tier 3)	3,464/4,949	58	240/480V	99.0	60	John Deere
G 70 (Tier 4)	3,510/4,995	63	240/480V	115.0	60	Cummins
G 100 (Tier 3)	4,699/7,507	80	240/480V	133.0	60	John Deere
G 100 (Tier 4)	4,804/7,612	80	240/480V	147.0	60.0	Cummins
G 120 (Tier 3)	4,725/7,533	96	240/480V	158.0	60	John Deere
G 120 (Tier 4)	6,268/7,638	96	240/480V	173.0	60	Cummins
G 150 (Tier 3)	6,202/9,782	121	240/480V	197.0	60	John Deere
G 150 (Tier 4)	6,143/9,723	121	240/480V	256.0	60	Cummins
G 180 (Tier 3)	6,213/9,793	143	240/480V	237.0	60.0	John Deere
G 180 (Tier 4)	6,154/9,734	143	240/480V	256.0	60	Cummins
G 240 (Tier 3)	6,714/10,914	191	240/480V	315.0	60	John Deere
G 230 (Tier 4i)	6,500/10,700	184	240/480V	314.0	60	Cummins
G 320	8,750/13,145	256	240/480V	433.0	60	Cummins



CENTRIFUGAL TRASH PUMPS

For water containing debris and solids up to 2 inches, use the PT series of gasoline or diesel powered centrifugal trash pumps.

CENTRIFUGAL DEWATERING PUMPS

These pumps are self-priming for easy operation. They are capable of handling clear water as well as water containing solids up to ¼ inch in diameter.

DIAPHRAGM PUMPS

The PD diaphragm trash pumps are used for clear water as well as water containing debris or solids up to 1.75 inches in diameter. These pumps are ideal for mud, slurries and seepage application.



PT 2



PG 3



PDT 3

Model	Oper. Wt (lbs)	Suction Size (in)	Flow Rate (gpm)	HP	Discharge Head (ft)	Suction Height Lift (ft)	Solid Size (in)
Trash Pumps							
PT 2	96	2.0	172	5.7	106	25	1.0
PT 2A	96	2.0	172	4.8	106	25	1.0
PT 2H	131	2.0	172	4.6	106	25	1.0
PT 3	140	3.0	356	9.0	92.9	25	1.5
PT 3A	150	3.0	356	7.9	92.9	25	1.5
PT 3H	169	3.0	356	6.8	92.9	25	1.5
PTS 4V	358	4.0	689	16.0	105	25	2.0
PT 6LT	2,443	2.0	1,300	31.8	100	25	2.0
PT 6LS	1,940	2.0	1,300	32.5	100	25	3.0
Dewatering Pumps							
PG 2	53	2.0	158	4.3	98	26	0.25
PG 2A	53	2.0	159	3.5	98	25	0.25
PG 3	69	3.0	256	5.7	101	26	0.25
PG 3A	69	3.0	264	4.8	98	25	0.25
Diaphragm Pumps							
PDT 2	131	2.0	50	4.3	25	25	1.5
PDT 2A	131	2.0	50	3.5	25	25	1.5
PDT 3	140	3.0	88	4.3	25	25	1.625
PDT 3A	140	3.0	88	3.5	25	25	1.625
PDI 3A	140	3.0	88	3.5	25	25	1.625

ELECTRICAL SUBMERSIBLE PUMPS

Wacker Neuson's lightweight portable submersible pumps are used for dewatering clear water as well as water containing debris, solids up to ¼ in diameter.

PS 3 1500



Model	Oper. Wt (lb)	Diameter Discharge (in)	Total head (ft)	Discharge Capacity (gpm)	Solids Diameter (in)	at rpm (rpm)
PSR1 500	26	0.075	39.5	45	0.236	3,255
PSG2 500	23	2.0	39.5	62.4	0.236	3,255
PST2 400/PSTF2 400	25	2.0	39.0	53	0.276	3,321
PS2 500	21	2.0	39.0	62.34	0.236	3,270
PSA2 500	22	2.0	39.0	62.34	0.236	3,270
PS2 800	29	2.0	39.0	82	0.236	3,300
PS2A 800	30	2.0	39.0	82	0.236	3,300
PST3 750/PSTF3 750	42	3.2	62.0	60	0.276	3,408
PS3 1500	63.5	3.0	68.9	111	0.334	3,440
PSW3 1500	72	3.2	68.9	111	0.236	3,480
PS2 2200	64	3.0	85.0	130.2	0.334	3,465
PS2 1503	64	2.0	75.46	105.7	0.334	3,400
PS3 2203	71	3.0	66.93	203.4	0.334	3,435
PS3 3703	121	3.0	101.7	219.3	0.334	3,410
PS3 5503	146	3.0	124.7	260.2	0.334	3,430
PS4 5503	146	4.0	78.74	428	0.334	3,430
PS4 7503HH	205	4.0	137.1	348.7	0.334	3,440
PS4 11003HH	287	4.0	167.3	377	0.334	3,480



PORTABLE COMPRESSORS

More than 25 years ago, Sullair Corporation revolutionized the US air compressor industry by introducing the first line of rotary screw compressors. With only two major moving parts, a male and female rotor, screw compressors are exceptionally simple, reliable machines. Today, the predominant type of portable air compressor in use. Sullair's new line of portables, ranging from 125 to 1900 cfm, is designed for compactness, maneuverability and accessibility for routine maintenance.



1600



750



185

Model	CFM	Engine Type	Rated Pressure PSIG	Working Weight (lbs)
185	185 cfm@100 psig	CAT C2.2 Tier 4	100	2,130
200H	200 cfm@150 psig	CAT C3.4 Tier 4	150	2,395
260	260 cfm@100 psig	CAT C3.4 Tier 4	100	2,840
300HH	300 cfm@200 psig	CAT CA4.4 Tier 4	200	5,450
375	375 cfm@100 psig	CAT CA4.4 Tier 4	100	5,450
375H	375 cfm@150 psig	CAT CA4.4 Tier 4	150	5,450
375HH	375 cfm@200 psig	CAT CA4.4 Tier 4	200	5,450
425	425 cfm@100 psig	CAT CA4.4 Tier 4	100	5,450
425H	425 cfm@150 psig	CAT CA4.4 Tier 4	150	5,450
550RH	550 cfm@250 psig	CAT C7 Tier 3	250	7,000
600H	600 cfm@150 psig	CAT C9.3 Tier 4	150	16,810
600HH	600 cfm@200 psig	CAT C7 Tier 3	200	7,000
700HH	700 cfm@200 psig	CAT C9.3 Tier 4	200	16,810
750	750 cfm@125 psig	CAT C9.3 Tier 4	125	16,810
750H	750 cfm@150 psig	CAT C9.3 Tier 4	150	16,810
750HH	750 cfm@175 psig	CAT C9.3 Tier 4	175	16,810
750XHH	500 cfm@500 psig	CAT C-15 ATAAC	500	16,040
825	825 cfm@125 psig	CAT C9.3 Tier 4	125	16,810
900	900 cfm@100 psig	CAT C9.3 Tier 4	100	16,810
900H	900 cfm@150 psig	CAT C9.3 Tier 4	150	16,810
900XH	900 cfm@350 psig	CAT C-15 ATAAC	350	16,040
1050	1050 cfm@100 psig	CAT C9.3 Tier 4	100	16,810
1300H	1300 cfm@150 psig	CAT C-15 ATAAC	150	15,950
1300HH	1300 cfm@200 psig	CAT C-15 ATAAC	200	16,350
1450HH	1450 cfm@175 psig	CAT C-15 ATAAC	175	16,350
1600	1600 cfm@100 psig	CAT C-15 ATAAC	100	16,260
1600H	1600 cfm@150 psig	CAT C-15 ATAAC	150	16,350

Sullivan Palatek®

Rotary Screw Air Compressors



D185P3



D750



D185



D1600



D375

The Ultimate Performance
Rotary Screw Air Compressor

Portable Compressors
Manufactured in the USA

185 cfm to 1800 cfm

John Deere, CAT and Cummins Engines

3 year Air End Warranty

Utility Models

Offshore Models

High Pressure Portable and Skid
950/350 to 1150/350

Instrument Quality Air
375H to 1600H

Skid Mount Aftercoolers

Skid Mount Dryers and Aftercoolers

Electric Construction Compressors

50 to 450 HP

Electronic Parts Orders through SmartEquip

Sullivan Palatek®

Sullivan Palatek offers a complete contractor line of pneumatic tools from Paving Breakers, Rock Drills, Busters, Diggers, Chippers and Tampers. These tools are based on tired and true working designs. Manufactured and Assembled in the USA!

BACKFILL TAMPER

The tamper cylinders are precision ground from alloy steel and have an internal oiler. They come with a 6" hollow cast iron butt and can be used with a variety of different optional tamping butts.

Model	Net Weight (lbs)	Bore (in)	Stroke (in)	Blows per Minute	Waranty
SBT-6	40.0	1.5	5.5	800	1 year



SBT-6

CHIPPING HAMMERS

The full line of 15 pound class Chippers can come with open handles with thumb triggers or heavy duty 4 bolt handles with external Thumb triggers or internal triggers. The open handle forged and is machined from high alloy steel with a shock, tool steel piston. The 4 bolt chipper is machined from high alloy steel and cast "D" handle with an easy to use Thumb or internal trigger. All are available with optional universal ball retainers. The 3" and 4" Thumb and Internal trigger 4 bolt chippers are available with Screw-On Universal Ball retainers. The light chipper is 11 pounds for easy overhead and light demolition work, has a stepped piston, cast handle with top mount trigger.

Model	Net Weight (lbs)	Bore (in)	Stroke (in)	Blows per Minute	Waranty
SCHO-2	13.0	1.125	2	2,300	1 year
SCHO-3	14.0	1.125	3	2,200	1 year
SCHO-4	15.0	1.125	4	1,800	1 year
SCH-2	13.0	1.125	2	2,300	1 year
SCH-3	14.0	1.125	3	2,200	1 year
SCH-4	15.0	1.125	4	1,800	1 year
SCH-11	11.0	1.125	2.375	2,550	1 year

CLAY DIGGERS

Available in two sizes: the 30 pound has the same rugged construction as the 30 pound breaker with the "D" handle with internal trigger. The 20 pound has a machined cylinder head with a cast "D" handle and thumb trigger.

Model	Net Weight (lbs)	Bore (in)	Stroke (in)	Blows per Minute	Waranty
SCD-30	30.0	1.75	3.375	1,550	1 year
SCD-20	19.0	1.418	2.75	1,560	1 year



SCD-20

PAVING BREAKERS

The line of paving breakers include 30, 40, 60 and 90 pound "T" handle tools, all with industry standard chuck sizes. They are all built from a proven market design, 4 bolt back threads, heavy duty side rod bolts and springs, forged alloy construction with removable chucks. Internal oilers on the 30, 60 and 90 pound breakers, 40 lb requires in line oiler.

Model	Net Weight (lbs)	Bore (in)	Stroke (in)	Blows per Minute	Waranty
SPB-90	92.5	2.625	6.0625	1,250	1 year
SPB-60	67.0	2.25	4.0937	1,400	1 year
SPB-40	42.0	1.73	5.75	900	1 year
SPB-30	34.0	1.75	3.375	1,550	1 year



SPB-60

Sullivan Palatek®

ROCK DRILLS

The Sullivan-Palatek line of drills are available in many weight sizes from 20-60 pounds and a large variety of chuck sizes. The SRD-75 is a heavy quarry drill suitable for drilling in granite and available in two chuck sizes. The SRD-55 is a quarry drill that can be used on high psi concrete it is a proven Toyo design and is available in 2 chuck sizes.

SRD-20



SRD-50



Model	Net Weight (lbs)	Bore (in)	Stroke (in)	Blows per Minute	Waranty
SRD-75	61.0	2.625	3.22	2,250	1 year
SRD-55	56.0	2.625	2.6875	1,650	1 year
SRD-50	51.0	3.0	2.0	2,300	1 year
SRD-30	29.0	2.4375	1.4375	2,700	1 year
SRD-20	16.5	1.9375	1.89	2,300	1 year

SPIKE DRIVERS

Railroad spike drivers are the same design as the standard paving breakers and have a special forged alloy striking dolly with an additional grease fitting for lower end lubrication. The SSD-60 is used on seasoned ties and the SSD-90 is for new or green ties.

SSD-60



SSD-90



Model	Net Weight (lbs)	Bore (in)	Stroke (in)	Blows per Minute	Waranty
SSD-90	89.5	2.625	6.0625	1,250	1 year
SSD-60	64.0	2.25	4.0937	1,400	1 year

Model	Net Weight (lbs)	Length (in)	Stroke (in)	CFM	Waranty
Air Cannon	5 lbs	48"	n/a	135	90 days



Kelly Tractor Co is now an authorized distributor for Metso® Aggregate Mobile Crushing and Screening Plants, Cone Crushers, Gyrotory Crushers, Impactors, screens and Jaw Crushers. At Metso®, we know that the real measure of our worth is the results we deliver to our customers.



Mobile Jaw Crushing Plants



Mobile Impact Crushing Plants



Cone Crushers



Gyrotory Crusher



Mobile Screens



Compact Impact



Metso Nordberg Impact
NP Series Crushers



Metso Screens



Jaw Crushers

For more information on Metso Aggregate Equipment

please contact Mike Wohlert 561-373-1448 or email him at: Mike_Wohlert@kellytractor.com

“Para Español, llame a Juan Lopez (305) 592-0556 Juan_Lopez@kellytractor.com”

Mobile Jaw Crushing Plants



The Lokotrack® mobile jaw crushing plants is the ideal solution for most difficult transportation conditions and it can be transported in an airplane, by ski lift or on a flat bed trailer. Our Lokotracks are the most compact jaw crushing plants and provide great performance especially in recycling and contracting segment.

Mobile Impact Crushing Plants

The Lokotrack® LT Series are the most compact impact crushers on tracks, most commonly used for crushing medium to hard rocks for recycling. The Mesto Mobile impactor crushing plants can crush any recycled material from asphalt to concrete and brick materials.





Nordberg® HP Series cone crushers

The Nordberg HP cone crushers is the most popular in the world. Each rock crusher is proven to be an outstanding performer in the thousands of mining, industrial and quarrying applications.



Gyratoy Crusher

The ultimate performance of the Nordberg GP7 secondary gyratory crusher is the result of its large feed opening combined with the highest power rating and its size class. The Unique design of this true secondary gyratory crusher enable the use of a 560 kw (750 hp) power rating in hard rock crushing applications.



Metso CVB™ Inclined Screens

As part of Metsos PREMIER screen series, the CVB™ is fully configurable, designed to incorporate any type of screening media for maximum operational flexibility while achieving safe and simple maintenance.



Metso Premier TS™ multislope screens

As part of the Metso PREMIER screen series, the TS™ is fully configurable, designed to incorporate any type of screening media for maximum operational flexibility while achieving safe and simple operation.



Metso Compact FS Screens

As part of the Metso COMPACT screen series, the FS™ is designed for integration into tight spaces, both fixed and mobile plants and includes carefully selected features in a standard configuration, for easy and reliable operation.



Metso PREMIER ES™ horizontal screens

As part of the PREMIER screen series, the ES™ is fully configurable, designed to incorporate any type of screening media for maximum operational flexibility while achieving safe and simple maintenance.



Jaw Crushers

Nordberg® C Series jaw crushers are engineered for the toughest feed materials. They are proven reliable and productive in thousands of real mining, quarrying, recycling and industrial applications. You can rely on the Nordberg C series jaw crushers as the backbone of your process.





MAULDIN PAVING PRODUCTS

Kelly Tractor Co. now carries the complete line of Mauldin® Paving Products by Calder Brothers.

- Pavers
- Tack Sprayers
- Maintainers
- Motor Graders
- Rollers
- Water Tanks



1550 SERIES Mini-Paver



M413XT Maintainer



M 622 Compact Motor Grader



Precision Spray Unit



MT 600 Sprayer

Broce Broom

CR-350-SWEEPER

350 Series 4 wheel

The Broce® Curb Sweeper is designed to help clean in places that are tough to reach and are outside the sweeping radius of the main broom core. The Broce Curb Sweeper features a 27" diameter brush, heavy-duty construction, a reversible hydraulic operated float and a hydraulically operated float and down pressure for sweeping.

CR-350



MK-1 TRANSFER SWEEPER

The Model 350 Broce Broom with blade and gutter attachment working in front of a MK1 make a perfect team to complete the cleaning process.

MK-1



250 SERIES 3 WHEEL

The hydraulic tow hitch on every CB-250 is now standard with no cranking making it easier to transport machine to the job site.

CB 250





THE PERFECT BLEND OF TECHNOLOGY, PERFORMANCE AND PRODUCT SUPPORT

Known the world over, IMT hydraulic rigs are regarded as the most reliable, productive, stable and operator friendly within the drilling industry. Kelly Tractor Co. maintains the largest rental fleet in the Western Hemisphere by supporting foundation contractors with rigs designed to get the job done in a variety of soil and rock conditions.

IMT drill rigs are mounted on CAT® excavator bases which meet all current emissions requirements and standard. This allows us the ability to add the extensive resources, knowledge and parts availability of the CAT® dealer network to keep your rig up and running. Our dedicated product support team ensures that our rigs are ready when you are.

Additionally, Kelly Tractor Co. operates a 30,000 sq. ft. state of the art manufacturing facility in central Florida which is capable of design and fabrication of replacement kelly bar parts as well as repairs and rebuilds. Our fabrication and welding procedures along with proper metals analysis ensure your project is done right.

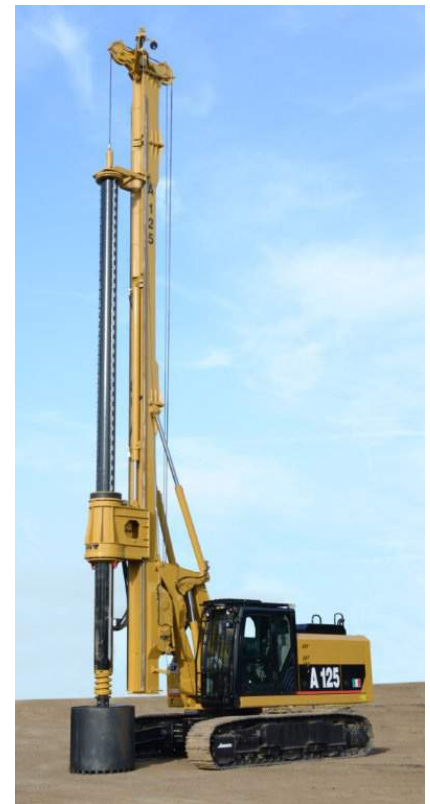
For more information, please call: 863-354-9036

Kelly Bar Repair Quotes: Ext. 24

Custom Parts Quotes: Ext. 31

Sales and Rental 888-955-3559
 Parts (561) 683-2015 Ext. 104
 Service (863) 354-9036

www.kellytractor.com/foundation-group



A125



AF350

Model	Base	HP @ 1800 rpm	Operating Weight w/standard Kelly Bar LBS
A125	IMT	163	78,264
A150	IMT	217	85,985
AF190	Cat 329E	245	119,050
AF250	Cat 336E	323	152,120
AF270	Cat 349E	432	176,368
AF300	Cat 349E	432	219,360
AF350	Cat 374D	512	258,970



RTC-8090

Kelly Tractor Co. offers Florida's premier solution for your lifting needs. As an authorized dealer for Link-Belt cranes, we provide the full compliment of construction cranes.

Our dedicated sales and support staff consists of the most experienced professionals in the industry. Our objective is to meet and exceed all of your crane needs with the highest quality products backed by the best parts and service team in the business. Whether you are in the market to purchase or simply rent, Kelly Tractor Co. is the best choice.

SE Florida - Julio Rivas - Phone: (305) 613-1571

NE Florida - Hugo Verez - Phone: (407) 399-1248 - Se Habla Español

West Coast Florida - Bill Hershner - Phone: (941) 350-9023

Parts (561) 683-2015 Extension 104

Rough Terrain Cranes

Models	Capacity US t (mt)	Boom type & Length ft (m)	Maximum Tip Height ft (m)	Operating Weight (lbs) kg
RTC-8030 II	30 (30)	4-Section 29-91.4 (8.8-27.8)	143 (43.6)	55,600 (25 220)
RTC 8050 II	50 (50)	4-Section 35.6-110 (11.6-35)	168 (51.2)	72,700 (32 976)
RTC 8065 II	65 (60)	4-Section 38-115 (11.6-35)	211.6 (64.5)	84,000 (38 600)
RTC 8080 II	80 (80)	4-Section 38-64 (11.6-19.5)	230.8 (70.4)	87,123 (39 518)
RTC 8090 II	90 (80)	5-Section 38-140 (11.6-42.7)	238 (72.5)	99,100 (44 951)
RTC 80110II	110 (100)	5-Section 40-150 (12.2-45.7)	250 (76.2)	129,442 (58 714)
RTC 80130 II	130 (120)	5-Section 41.3-162 (12.6-49.3)	278 (84.7)	130,589 (59 234)

Hydraulic Truck Cranes

Models	Capacity US t (mt)	Boom type & Length ft (m)	Maximum Tip Height ft (m)	Operating Weight (lbs) kg	Engine Type & HP (kW)
HTC-8640 SL	40 (36.2)	4-Section 35.6-110 (10.8-33.5)	167 (50.9)	65,605 (29 758)	Cummins ISL9 365 (272)
HTC-8660 II	60 (50)	4-Section 35.6-110 (10.8-33.5)	167 (50.9)	72,769 (33 007)	Cummins ISL9 365 (272)
HTC-8675 II	75 (70)	4-Section 41-127 (12.5-38.7)	230 (70.2)	85,276 (38 681)	Cummins ISX12 450 (336)
HTC-8690 II	90 (81.6)	5-Section 38-140 (11.6-42.7)	237 (72.2)	91,086 (41 316)	Cummins ISX12 450 (336)
HTC-86100	100 (85)	5-Section 38-140 (11.6-42.7)	237 (72.2)	91,086 (41 316)	Cummins ISX12 450 (336)
HTC-3140	140 (120)	5-Section 41.4-162 (12.6-49.3)	278 (84.7)	103,414 (46 908)	Cummins QSB-6.7 250 (185)
HTC-3140 LB	140 (120)	6-Section 42.3-195.3 (12.8-59.5)	311 (94.7)	108,618 (49 268)	Cummins QSB-6.7 250 (185)



Telescopic Crawler

Models	Capacity US t (mt)	Boom Type and Length ft (m)	Height Width Length ft (m)	Engine Type & HP (kW)	Gradeability	Operating Weight lb (kg)	Track extended gauge & length ft (m)
TCC-500	50 (51)	4-Section 35.6-110 (10.8-33.6)	H: 9.10 (3.01) W: 11.5 (4.12) L: 45.3 (13.85)	Cummins QSB 215 (160) Tier 4f	40%	97,600 (44 225)	Gauge: 11 (3.35) Length: 18 (5.47)
TCC-750	75 (70)	4-Section 38.6-115.6 (11.8-35.2)	H: 10.9 (3.29) W: 11.5 (3.63) L: 48.9 (14.35)	CAT C6 262 (195) Tier 3	40%	100,000 (45 359)	Extended: 15.2 (4.63) Intermediate: 13.6 (4.12) Track Length: 19.6 (5.95)
TCC-1100	110 (100)	5-Section 40-150 (12.2-45.7)	H: 11.8 (3.60) W: 11.9 (3.62) L: 48.6 (14.81)	Cummins QSL 320 (239) Tier 4	40%	221,500 (100 47 1)	Extended: 15.18 (4.63) Intermediate: 12.73 (3.88) Retracted: 8.9 (2.73) Track Length: 23.35 (7.12)

All Terrain Cranes

Models	Capacity US t (mt)	Boom type & Length ft (m)	Maximum Tip Height ft (m)	Operating Weight (lbs) kg	Upper Engine Type & HP (kW)
ATC-3210	210 (185)	6-Section	326.7 (99.6)	125,585 (55 603)	Cummins 215 (160)
ATC-3275	275 (250)	7-Section	350 (106.7)	136,000 (61 688.5)	Cummins 215 (160)

Lattice Crawler Cranes

Models	Capacity US t (mt)	Crane Operating Weight lb (kg)	Boom Type & Length ft (m)
138 HSL	80 (73)	145,403 (65 954) Counterweights "ABC"	Tube: 40-200 (12.19-60.96) Angle: 40-150 (12.19-45.72)
218 HSL	110 (100)	192,735 (87 423)	Tube: 40-230 (12.19-70.10)
238 HSL	150 (137)	262,677 (119 148) Counterweights "ABC"	Tube: 50-260 (15.24-79.25)
248 HSL	200 (182)	270,130 (122 529)	Tube: 55-285 (16.76-86.86)
298 HSL	250 (227)	390,069 (176 932)	Tube: 60-300 (18.29-91.44)
348 Hylab 5	300 (273)	505,688 (229 376)	Tube: 70-300 (21.3-91.4)
			Long Range: 85-355 (25.01 - 108.2)
548	550 (500)	966,214 (438 267)	Heavy duty: 79-315 (24-96) Long Range: 138-154 (42.62-108)



TCC-1100



238 HSL



USED EQUIPMENT

Our used equipment sales representatives can assist you in selecting the right machine from our inventory. Many of our low hour, late model CAT® machines are from our own rental fleets, where they are maintained by trained technicians. We also carry some competitive lines.

Whether you are right around the corner or around the world, our representative can coordinate the delivery of your used equipment purchase right to your doorstep.

To search our large inventory of used equipment, visit www.kellytractor.com and click on the “New/Used Equipment” button on left center of the Home Page.



735



966H



365 BL



D6N LGP

The site is updated daily so you'll see the very latest in available inventory.

We also feature the following equipment for sale (based on availability): Agricultural tractors, agricultural irrigation systems, grooming and pasture mowers, tillers, air compressors, air tools, breakers, generators, rammers, vibratory plates, cranes, forklifts, pasture renovators, equipment trailers and a large variety of attachments.

For more information, please contact the used equipment sales department at (305) 592-0556 or e-mail us at ktccat@kellytractor.com



PRODUCT SUPPORT / PARTS

Parts

Our parts availability is one of the reasons the products we represent offer a greater value to our customers. Kelly Tractor Co. inventories over 45,000 line items and provides at least 84% parts availability off the shelf. This inventory includes complete engines, transmissions and other major components. In addition, we stock parts for most major brands of lift trucks.

Product Support Services

- Preventative Maintenance Services – field and shop
- 7 Convenient locations – **Miami, Davie, West Palm Beach, Clewiston, Fort Myers, Mulberry, and Orlando**
- Emergency parts network 24 hours a day
- Qualified service technicians
- Technicians on call after hours for emergency services
- Hydraulic hoses and fitting supplies
- Hydraulic test benches
- Exchange components available
 - o Engines
 - o Transmissions
 - o Hydraulic Cylinders
 - o Torque converters
 - o Final drives
- Large parts inventory
- Technical analysis inspections
- Dynamometer
- Specialized shops
- Special diagnostic tools
- Repair options
- Caterpillar remanufactured components
- Bucket/Ground Engaging Tools inspections
- Certified machine rebuild options
- Condition Monitoring
 - o Vision Link – Web based machine location, health, fuel consumption, and hours etc.
 - o SOS – Scheduled oil sampling
 - o Web based SOS results
 - o Machine inspections (TA1 and TA2)





USED PARTS

Call Today for price and availability

Kelly Tractor Co. stocks an assortment of used parts.

Please contact us to find out if we have the part for you.



For more information on used parts please contact:

**Kelly Tractor Co.
8255 NW 58 St
Miami, FL 33166
305-592-5374 x 1141
usedparts@kellytractor.com**



CAT® LIFT TRUCKS

With load capacities ranging from 2,500 to 36,000 lbs., Cat Lift Trucks product offerings consist of electric counterbalanced cushion and pneumatic tire lift trucks as well as internal combustion cushion and pneumatic tire forklifts. With a dedicated focus on quality, reliability and customer service, Cat Lift Trucks offers innovative material handling solutions.

EP4000



Class IV Internal Combustion Cushion Tire (LP Gas)

Model	Capacity (lbs)	Turning Radius (in)	Length (in)	Width (in)	Height (in)	Weight (lbs)
3,000-6,000 lb capacity LP Gas Cushion Tire						
2C3000	3,000	70	82	38	81	6,065
2C3500	3,500	71	83	38	81	6,450
2CC4000	4,000	73	86	40	81	7,010
2C4000	4,000	77.5	90.5	42	81.5	7,360
2C5000	5,000	79.5	92.5	42	81.5	8,155
2C5500	5,500	81	95	42.4	81.5	9,050
2C6000	6,000	82.5	96.5	42.4	81.5	9,480
2C6500	6,500	83.5	97.5	42.4	81.5	9,840
7,000-15,000 lb capacity LP Gas Cushion Tire						
GC35K	7,000	88	98.8	46.5	86.8	11,550
GC40K	8,000	90	100.4	46.5	86.8	12,280
GC40KSTR	8,000	82.3	94.9	46.5	86.8	12,470
GC45KSWB	10,000	92.1	103.1	46.5	86.8	14,265
GC55K	12,000	100.4	114.6	52	86.8	15,850
GC55KSTR	12,000	92.5	104.5	52	86.8	16,645
GC60K	13,500	101.2	116.1	56.7	88.8	19,310
GC70K	15,500	101.2	116.1	56.7	88.8	20,900
GC70KSTR	15,500	97.2	107.5	56.7	88.8	21,870
Model	Capacity (lbs)	Max Fork Height (in)	Length (in)	Width (in)	Height (in)	Weight (lbs)
8000-15,000 lb capacity LP Gas Cushion Tire						
GC40KPRHSTR	8,000	198.8	94.9	46.5	86.8	12,470
GC45KPRHSTR	10,000	198.8	103.1	46.5	86.8	14,265
GC55KPRSTR	12,000	179.5	104.5	52	86.8	16,645
GC70KPRH	15500	198.8	116.1	56.7	88.8	20,900
GC70KPRHSTR	15500	198.8	107.5	56.7	88.8	21,870

2C6000



Class 1 - Electric Counterbalanced

Model	Capacity (lbs)	Voltage (V)	Turning Radius (in)	Length (in)	Width (in)	Height (in)	Weight (lbs)
2,500-4,000 lb capacity 3 -Wheel Pneumatic Tire							
2ET2500	2,500	48	56.7	69.9	41.7	80.4	5,947
2ETC3000	3,000	48	60.9	74.3	41.7	80.4	6,520
2ET3000	3,000	48	65.2	78.6	41.7	80.4	6,627
2ETC3500	3,500	48	60.9	74.3	44.1	80.4	7,084
2ET3500	3,500	48	65.2	78.6	44.1	80.4	6,957
2ET4000	4,000	48	65.2	78.6	44.1	80.4	7,343
3,000-4,000 lb capacity Pneumatic Tire							
EPC3000	3,000	48	73.2	78.3	41.7	80.4	6,597
EP3000	3,000	48	78.1	82.6	44.1	80.4	6,503
EPC3500	3,500	48	73.2	78.3	44.1	80.4	6,906
EP3500	3,500	48	78.1	82.6	44.1	80.4	6,812
EP4000	4,000	48	78.1	82.6	44.1	80.4	7,175
3,000-6500 lb capacity Electric Cushion Tire							
E3000 36V	3,000	36	70.5	78	37	86	6,200
E3000 48V	3,000	48	70.5	78	37	86	6,200
E3500 36V	3,500	36	70.5	78	37	86	6,800
E3500 48V	3,500	48	70.5	78	37	86	6,800
EC4000 36V	4,000	36	72.5	81	39	86	7,400
EC4000 48V	4,000	48	72.5	81	39	86	7,400
E4000 36V	4,000	36	74.5	82	41.5	87	8,100
E4000 48V	4,000	48	74.5	82	41.5	87	8,100
EC22N2 36V	4,500	36	73.2	82	41.5	87	8,805
EC22N2 48V	4,500	48	73.2	82	41.5	87	8,805
EC25N2 36V	5,000	36	73.2	82	41.5	87	9,140
EC25N2 48V	5,000	48	73.2	82	41.5	87	9,140
EC25EN2 36V	5,000	36	77.3	85.9	41.5	87	9,350
EC25EN2 48V	5,000	48	77.3	85.9	41.5	87	9,350
EC25LN2 36V	5,500	36	77.3	85.9	43.5	87	9,680
EC25LN2 48V	5,500	48	77.3	85.9	43.5	87	9,680
EC30N2 36V	6,000	36	78.8	88.8	43.5	87	10,635
EC30N2 48V	6,000	48	78.8	88.8	43.5	87	10,635
EC30LN2 36V	6,500	36	79.5	88.8	43.5	87	11,090
EC30LN2 48V	6,500	48	79.5	88.8	43.5	87	11,090
5,000-6,000 lb capacity Pneumatic Tire							
2EPC5000	5,000	80	78.7	90.4	47.2	88.2	10,472
2EP5000	5,000	80	84.7	96.1	47.2	88.2	10,311
2EPC6000	6,000	80	78.7	90.6	47.2	88.2	11,530
2EP6000	6,000	80	84.7	96.3	47.2	88.2	11,303
2EP6500	6,000	80	84.7	96.5	51.2	88.2	11,876
8,000-10,000 lb capacity Pneumatic Tire							
2EPC8000	8,000	80	89.9	150.3	52.8	88.6	14,623
2EP8000	8,000	80	96.5	156	52.8	88.6	14,553
2EP8500	8,500	80	103.8	161.5	57.1	88	15,580
2EPC9000	9,000	80	89.9	150.3	57.1	88	15,637
2EP9000	9,000	80	96.5	144.1	57.1	88	15,547
2EP10000	10,000	80	96.5	156	57.1	88	16,402
2EP11000	11,000	80	103.8	161.5	57.1	88	17,476



Class IV - Internal Combustion Pneumatic Tire (LP Gas)

Model	Capacity (lbs)	Turning Radius (in)	Length (in)	Width (in)	Height (in)	Weight (lbs)
3000-7000 lb capacity Internal Combustion Pneumatic Tire						
2P3000	3,000	76.8	89	42	82.5	5,650
2P3500	3,500	78	90	42	82.5	6,070
2PC4000	4,000	79.5	92	42	83	6,750
2P4000	4,000	86.5	98	45.5	83	7,370
2PD4000	4,000	86.5	98	45.5	83	7,610
2P5000	5,000	87.8	100	45.5	83	7,990
2PD5000	5,000	87.8	100	45.5	83	8,210
2P5500	5,500	91.1	104	50	83	9,090
2PD5500	5,500	91.1	104	50	84	9,330
2P6000	6,000	93.7	107	50	84	9,400
2PD6000	6,000	93.7	107	50	84	9,640
2P6500	6,500	96	108	50	84	10,150
2PD6500	6,500	96	108	50	84	10,390
2P7000	7,000	96	110	51	84.5	10,340
2PD7000	7,000	96	110	51	84.5	10,590
8,000-12,000 lb capacity Internal Combustion Pneumatic Tire						
GP40N1	8,000	101	118	55.5	90.5	12,900
DP40N1	8,000	101	118	55.5	90.5	13,050
GP45N1	9,000	107	123	57.5	90.5	13,800
DP45N1	9,000	107	123	57.5	90.5	13,950
GP50CN1	10,000	109	125	57.5	90.5	14,950
DP50CN1	10,000	109	125	57.5	90.5	15,100
GP50N1	11,000	114	132.5	57.5	90.5	15,950
DP50N1	11,000	114	132.5	57.5	90.5	16,100
GP55N1	12,000	116	132	57.5	90.5	16,700
DP55N1	12,000	116	132	57.5	90.5	16,843
15000 lb capacity Diesel Pneumatic Tire						
DP70E	15,500	133.7	143.3	85.6	95.3	20,705
17,500-36000 lb capacity Diesel Pneumatic Tire						
P22000	22,000	157.5	168.9	99	114.8	34,613
P26500	26,500	159.8	172.2	99	114.8	37,412
P30000	30,000	163.8	178.1	102.4	116.5	41,293
P33000	33,000	179.1	190.2	102.4	116.5	40,411
P36000	36,000	189.6	198.6	103.7	116.5	42,395

5,500 LB CAPACITY PALLET JACK

This hand pallet truck has been engineered to provide long-lasting strength and versatility. Cat Lift Trucks can help you solve your tough material handling needs, with a full range of durable pallet trucks capable of handling your toughest applications.



2PD6000

Hand Pallet Truck

Model	Width (in)	Fork Length (in)	Lowered Height (in)	Raised Height (in)	Capacity (lbs)
A400002750	27	48	2.03	5.5	3,300
A400002748	27	48	2.92	7.67	5,500
A400002048	20.5	48	2.92	7.67	5,500
A400002036	20.5	35.5	2.92	7.67	5,500
A400002043	20.5	43.3	2.92	7.67	5,500



ROUGH TERRAIN FORKLIFTS

Harlo has maintained leadership in this industry by working with many of the major tractor companies in America and by continually improving the design and quality of its forklifts and forklift components.

Harlo-designed mast assemblies are made out of steel, rolled to their specifications from Harlo-owned rolls. Their testing facilities set up for stability ratings of forklift units. Every mast produced by Harlo is put in a special test stand and cannot be shipped until the inspection is complete.

Harlo HP5000

Engine	Cummins QSB 4.5 electronic
Type	4 Cycle Diesel
HP	110@2500 rpm
Wheel Base	83
Fuel Tank	21.5
Drive tread width (in)	62
Underclearance (in)	15
Steer (2WD) (in)	68
Steer (4WD) (in)	68



Mast Options					
Capacity at 24 in load center	Lift Height (ft)	Over Height Lowered (in)	Carriage Width (in)	2WD Weight (lbs)	4WD Weight (lbs)
5,000 lbs	12 ft 2 Stg	110	48	11,697	11,947

Harlo HP6500/8500

Harlo HP6500/8500

Engine	Cummins QSB 4.5 electronic
Type	4 Cycle Diesel
HP	110@2500 rpm
Wheel Base	83.5
Fuel Tank	21.5
Drive tread width (in)	65.3
Underclearance (in)	15
Steer (2WD) (in)	68
Steer (4WD) (in)	73.6



Mast Options						
Capacity at 24 in load center (lbs)	Lift Height (ft)	Over Height Lowered (in)	Overall Extended (in)	Carriage Width (in)	2WD Weight (lbs)	4WD Weight (lbs)
6,500	15 ft 2 Stg	125	210	60, 72 or 84	13,122	13,458
	22 ft 3 Stg	125	300	60, 72 or 84	13,742	14,032
	28 ft 3 Stg	146	372	60	14,041	14,228
6,500 Free Lift	20 ft Stg	117	266	60, 72 or 84	13,840	14,130
8500	15 ft 2 Stg	125	212	60, 72 or 84	15,492	15,678
	16 ft 3 Stg	100	228	60, 72 or 84	15,648	15,724
	22 ft 3 Stg	125	100	60, 72 or 84	15,697	16,268
8500 Free Lift	20 ft Stg 3	117	266	60, 72 or 84	15,852	16,174



JUNGHEINRICH INDUSTRIAL PRODUCTS

Jungheinrich offers you the right pallet truck, forklift, and order picker for any application. With over 600 different vehicles to choose from, you are sure to find what you need for your operations, regardless of the lifting height, surface, or transport distances involved. For more information on our material handling equipment, click on the product group you are interested in.

- Hand Pallet trucks
- Pallet trucks
- Stacker
- Electric counterbalance trucks
- ICE trucks
- Reach trucks
- Order pickers
- Tow Tractors





THE BENDI ELECTRIC

The Bendi Electric Narrow aisle trucks are available with three stage tilting masts, with lift heights to 36 ft (11M). Quad masts are also available to 26 ft (7.29M), which gives the Bendi high stacking ability, while allowing the low mast height to work in highway trailers or travel through low doorways. Electric capacities range from 3,000 lbs to 4,500 lbs.



Model	Basic Capacity (lbs/kg)	Maximum Triple Mast Lift Height Available (in/M)	Maximum Quad Mast Lift Height Available (in/M)	Recommended Storage Aisle Size with 48" x 40" load (in/M)
B3/30 ^{AC}	3000/1363	360/9.14	NA	71/1800
B30AC	3000/1363	276/7.01	312/7.92	78/1981
B40AC	4000/1818	360/9.14	312/7.92	78/1981
B40VAC	4000/1818	360/9.14	312/7.92	72/1870
B55 ^{AC}	5500/2500	360/9.14	315/8	84/2.13
B55 ^{AC} HL	5500/2500	472/12	NA	84/2.13



THE BENDI I4 – LP GAS POWERED

Almost everything that makes the battery-powered Bendi the right choice for so many applications applies equally to the Bendi IC. Both are equally at home on the loading dock or in the warehouse. Both can go from trailer to plant floor to narrow aisle storage without staging. Both navigate narrow aisles that allow Bendi operators to move safely into tight spots that other forklifts cannot reach. The main difference is that our LP-Powered Bendi can be fueled in less than 5 minutes.

Model	Basic Capacity (lbs/kg)	Maximum Triple Mast Lift Height Available (in/M)	Maximum Quad Mast Lift Height Available (in/M)	Recommended Storage Aisle Size with 48" x 40" load (in/M)
B40i4	4000/1818	312/7.92	312/7.92	78/1981



LANDOLL DREXEL SWINGMAST

Nothing else measures up to the Landoll Drexel SwingMAST lift trucks. Their unique design enables drivers to turn only the mast assembly, not the entire truck. Aisles as narrow as 4 ½ ft (1.37m) allowing you to store more than ever, can be easily obtained. The versatile Landoll Drexel SwingMast gives you four trucks in one; performing like a conventional counterbalanced truck, a reach truck, a side loader and a turret truck. Models available in capacities from 3,000 lbs (1363 kg) to 12,000 pounds (5454 kg), with 3 or 4 stage masts with lift Heights to 30 feet (9.14M).



Drexel

Model	Basic Capacity (lbs/kg)	Power Source	Maximum Triple Mast Lift Height Available (in/M)	Maximum Quad Mast Lift Height Available (in/M)	Recommended Storage Aisle Size with 48" x 40" load (in/M)
SLT-30AC	3000/1363	Electric	272/6.90	312/7.92	56/1420
SLT-35AC	3500/1590	Electric	272/6.90	312/7.92	56/1420
SL-30	3000/1367	Electric	272/6.91	312/7.92	60/1500
SL-40	4000/1818	Electric	360/9.14	312/7.92	60/1500
SL-50	5000/2272	Electric	374/9.5	315/8.00	60/1500
SL-60	6000/2727	Electric	289/7.34	NA	66/1676
SL-80	8000/3636	Electric	281/7.14	NA	72/1829
SL-120	12000/5455	Electric	243/6.17	NA	78/1981
E-60-SL	6000/2727	LP Gas or Diesel	240/6.10	NA	72/1829

Drexel EX (Explosion Proof)

FL-40-EX	4000/1818	Electric	236/5.99		144/3658
FL-60-EX	6000/2727	Electric	234/5.94		144/3658



LANDOLL STAND-UP COMPACT

The LSC is a 3 wheel stand-up ride, compact, rear entry front loader, with a single poly rear drive/steer and poly load tires. It's a short turning radius, high visibility mast and compact design makes stacking and dock work easy and efficient. The low step height provides easy access on and off the truck for order picking and load checking.

Model	LSC25		LSC30
Capacity at 24" (600mm) Load Center	lb/kg	2,500/1,136	3,000/1,364
Truck Weight with Battery	lbs/kg	6,750/3,068	6,600/3,000
Travel Speed	Loaded	mph/kph	6/9.7
	Unloaded	mph/kph	7/11.3
Wheelbase - Mast Vertical	in/cm	34.6/88	40.6/103
Fork Length	in/cm	42/107	42/107
Operator Floor Height	in/cm	10.5/27	10.5/27
Gradeability Loaded/Unloaded	%	7/12	7/12



When you need a lift, you know it must be a Genie. Genie sets the standard by which other lifts are judged. Simply put, Genie builds a better lift for every job. With four decades of experience, Genie provides the most advanced equipment in the industry the full line of the genie products, offers unmatched performance and reliability.



SCISSOR LIFT



NARROW AISLE MANLIFT



TELESCOPIC BOOM LIFT





Model	Working Height Max (ft)	Horizontal Reach (ft.)	Lift Capacity (lbs)	Power Source
Articulating Booms - Electric & Bi-Energy				
Z-30/20 N	36	21.5	500	48V DC
Z-30/20N RJ	35.2	20.6	500	48V DC
Z-34/22 DC	40.6	22.3	500	48V DC
Z-34/22 Bi-Energy	40.6	22.3	500	48V DC/Kubota 13.3 hp
Z-40/23N	46.5	22.8	500	48V DC
Z-40/23 RJ	46.5	22.8	500	48V DC
Z-45/25 DC & Bi	51.6	25.00	500	48V DC
Z-45/25J DC & Bi	51.9	25.1	500	48V DC

Model	Working Height Max (ft)	Horizontal Reach (ft.)	Lift Capacity (lbs)	Power Source
Articulating Booms - Diesel Engine				
Z-34/22 IC 2WD	40.6	22.3	500	Kubota gas or diesel
Z-34/22 IC 4WD	40.10	22.3	500	Kubota gas or diesel
Z-45/25 RT	51.10	24.7	500	Ford, Duetz or Perkins - gas or diesel
Z-45/25J RT	52.1	24.8	500	Ford, Duetz or Perkins - gas or diesel
Z-60/34	66.4	36.3	500	Ford, Duetz or Perkins - gas or diesel

Model	Working Height Max (ft)	Horizontal Reach (ft.)	Lift Capacity (lbs)	Power Source
Telescopic Booms				
S-40	46	31.8	500	Ford, Duetz or Perkins - gas or diesel
S-45	51	36.8	500	Ford, Duetz or Perkins - gas or diesel
S-60 X/ S-60 XC	64.4	50.10	500	Ford, Duetz or Perkins - gas or diesel
S-65	71.0	56.2	500	Ford, Duetz or Perkins - gas or diesel
S-80X	86	71.6	500/1000	Duetz, Perkins or Continental -gas or diesel
S-85	91	76.6	500	Duetz, Perkins or Continental -gas or diesel
S-100	106	75	750	Duetz or Perkins diesel
S-105	111	80	500	Duetz or Perkins diesel
S-120	126	75	750	Duetz or Perkins diesel
S-125	131.2	80	500	Duetz or Perkins diesel
SX-180	186	80	750	Duetz or Perkins diesel

Model	Working Height Max (ft)	Platform Width (in)	Lift Capacity (lbs)	Power Source
Slab Scissor Lifts				
GS-1530	21	2.5	600	24V DC
GS-1930	25	2.5	500	24V DC
GS-2032	26	2.8	800	24V DC
GS-2632	32	2.8	500	24V DC
GS-3232	38	2.8	500	24V DC
GS-2046	26	3.93	1200	24V DC
GS-2646	32	3.93	1000	24V DC
GS-3246	38	3.93	700	24V DC
GS-2669 DC	32	5.3	1500	48V DC
GS-3369 DC	39	5.3	1000	48V DC
GS-4069 DC	46	5.3	800	48V DC

Model	Working Height Max (ft)	Lift Capacity (in)	Platform Height
Aerial Work Platforms			
AWP-20S	26 ft 1 in	350	20 ft 1 in
AWP-25S	30 ft 10 in	350	25 ft 10 in
AWP-30S	35 ft 6 in	350	29 ft 6 in
AWP-36S	42 ft 5 in	350	36 ft 5 in
AWP-40S	46 ft 4 in	300	40 ft 4 in



JLG electric powered aerial work platforms feature longer runtime, greater uptime and higher productivity.

The energy efficient electric drive boosts your productivity with industry-leading duty cycles. The efficient machine design means less scheduled service, a quieter work area, less dependency on hydraulic oils, and zero emissions.

From job start to completion, 12 ft to 60 ft, scissor lift, boom lift or mast lift, JLG has an electric lift to meet your needs and keep your job green.

Scissor lifts

Model	Platform Height Elevated - ft	Overall Width - in	Platform Capacity - lbs
Electric Scissor Lifts			
1932RS	19	32	500
3248RS	32	48	705
1930ES	18.9	30	500
2030ES	20	30	800
2630ES	25.6	30	500/800
2646ES	26	46	1,000
3246ES	32	46	700/1,000
Engine Powered Scissor Lifts			
3394RT	33	7.10	2,250
4394RT	43	7.10	1,250
260MRT	26	5.9	1,250

Booms

Electric Boom Lifts

Model	Platform Height Elevated - ft	Overall Width - in	Platform Capacity - lbs
E300AJP	30	4	500
E300AJ	30	4	500
E400A	40	5.9	500
E400AJP	40	5.9	500
M400A	40	5.9	500
M400AJP	40	5.9	500
E400AN Narrow Isle	40	4.11	500
M400AN	40	4.11	500
E400AJPN	40	4.11	500
M400AJPN	40	4.11	500
E600J	60.3	7.11	500
M600J	60.3	7.11	500
E600JP	60.4	7.11	500

Booms

Engine Powered Boom Lifts - Telescopic

Model	Platform Height Elevated - ft	Overall Width - in	Platform Capacity - lbs
400S	40	7.65	500
460SJ	46	4.65	500
600S	60.3	8.2	500/1000
660SJ	66.8	8.2	500
800S	80	8.2	500
860SJ	86	8.2	500
1350SJP	135	8.2	500
1200SJP	120	8.2	500
1500SJ	150	8.2	500/1000



Booms - Powered Boom Lifts - Articulating

Model	Platform Height Elevated - ft	Overall Width - in	Platform Capacity - lbs
340 AJ	34	6.10	500
450A Series II	45	7.825	500
450AJ Series II	45	7.825	500
600A	60	8.2	500/1000

600AJ	60.7	8.2	500
600 AN (Narrow)	60	7	500/1000
600 AJN (Narrow)	60	7	500
740AJ	74	8	500
800A	80	8	500/1000
800AJ	80	8	500
1250AJJP	125	8.2	500/1000
150HAX	150	11.6	500/1000

Booms - Mast Boom Lifts

Model	Platform Height Elevated - ft	Overall Width - in	Platform Capacity - lbs
T20E	20.2	39	500
T26E	26.5	45	500
T33MJ	33	47.2	500

Booms - Towable Boom Lifts

Model	Platform Height Elevated - ft	Overall Width - in	Platform Capacity - lbs
T350	35	4.9	500
T500J	50	5.7	500

Booms - Compact Crawler Boom

Model	Platform Height Elevated - ft	Overall Width - in	Platform Capacity - lbs	Horizontal Reach (ft)
X390AJ	39.2	31	440	22
X550AJ	55	31	440	31
X700AJ	69.7	39	440	37



1250 AJJP



1932RS



JLG electric powered aerial work platforms feature longer runtime, greater uptime and higher productivity.

Model	Platform Height (ft-in)	Platform Capacity (lbs)	Platform Size (in)
Electric Powered Aerial Work Platforms			
1230ES Electric Mast Lifts	12	500	27 x 49.5

ES Series Electric Scissor Lifts			
1930ES	18 ft 9 in	500	30 x 73.5
2030DES	20 ft	800	30 x 90.5
2630ES	26 ft	1,000	30 x 90.5
2646ES	26 ft	1,000	44 x 98.5
3246ES	31 ft 9 in	700/1,000	44 x 98.5

LE Series Large Electric Scissor Lifts			
3369LE	33	1,000	65 x 115
4069LE	40	800	65 x 115

Model	Platform Height (ft-in)	Platform Capacity (lbs)	Horizontal Outreach
Towable Boom Lifts			
T350	35	500	20 ft 2 in
T500DJ	50	500	31 ft 6 in

Model	Platform Height (ft-in)	Platform Capacity (lbs)	Horizontal Outreach (ft-in)
E300 Series Electric Boom Lifts			
E300AJ	30 ft	500	20 ft
E300AJP	30 ft	500	20 ft 6 in

Model	Platform Height (ft-in)	Platform Capacity (lbs)	Horizontal Outreach (ft-in)
E400/M400 Series Electric Boom Lifts			
E400A/M400A	40 ft	500	21 ft 2 in
E400 Narrow/M400 Narrow	40 ft	500	21 ft 2 in
E400AJP/M400AJP	40 ft	500	22 ft 5 in
E400AJP Narrow/M400AJP Narrow	40 ft	500	22 ft 5 in

Model	Platform Height (ft-in)	Platform Capacity (lbs)	Horizontal Outreach (ft-in)
E450 Series Articulating Boom Lifts			
E450A	45 ft	500	23 ft 1 in
M450A	45 ft	500	23 ft 1 in
E450AJ	45 ft	500	23 ft 9 in
M450AJ	45 ft	500	23 ft 9 in

Model	Platform Height (ft-in)	Platform Capacity (lbs)	Horizontal Outreach
E/M600 Electric Boom Series			
E600J	60 ft 3 in	500	43 ft 3 in
M600J	60 ft 3 in	500	43 ft 3 in
E600JP	60 ft 4 in	500	44 ft 5 in
M600JP	60 ft 4 in	500	44 ft 5 in



1930ES



E600A

3,000 TO 120,000 LB CAPACITY RECONDITIONED AND NON-RECONDITIONED UNITS ALWAYS IN STOCK

Used Forklifts

Kelly Tractor Co.'s Industrial Lift Division offers one of the largest selections of Used Equipment in South Florida. Our knowledgeable staff can assist you in purchasing the right machine for your business.

If we are not currently stocking the item, we can find it. From narrow aisle trucks to large container handling machines, you can depend on us to meet all of your lift truck needs.

Choose from:

- Aerial Lifts
- Lift Trucks
- High Lifts
- Pallet Trucks
- Narrow Aisle Trucks
- Marina Lift Trucks
- Rough Terrain Forklifts
- Container Handling Trucks



And Brands Like:

- Mitsubishi
- Hyster
- Genie
- JLG
- Clark
- Yale
- Nissan
- Caterpillar
- Truck Mounted Navigator
- Toyota
- Harlo



Export Sales Representative:

Christopher Alvarez
Kelly Tractor Co.
8205 NW 58 St
Miami FL 33166
305-463-6063
Christopher_Alvarez@kellytractor.com





MASSEY FERGUSON TRACTORS

1700 SERIES (22-59 HP)

Massey Ferguson is proud to offer the GC1700 series of sub-compact tractors and 1700 series of Economy and Premium compact tractors. Designed with performance and versatility in mind, these tractors have all the tools to get the job done.



Model	Rated HP	PTO HP	Transmission Options
1700 Series			
1726E	24@2600 rpm	20.4 or 19.2	9x3 or 3 Range Hydrostatic
1735M	36@2600 rpm	27.5 (Shuttle) 26.4 (HST)	12 x 12 Power shuttle or Hydrostatic
1740M	40@2600 rpm	31.2 (Shuttle) 29.1 (HST)	12 x 12 Power shuttle or Hydrostatic
1755M	53.9@2600rpm	41.3 (Shuttle) 39.7 (HST)	12 x 12 Power shuttle or Hydrostatic



2600-2700 SERIES (45-74 HP)

Going bigger, our Massey Ferguson 2600-2700 range of utility tractors allows our customers to reliably and comfortably perform a wide variety of jobs.

- Designed for comfort, built for efficiency.
- Synchro-shuttle transmission makes your work faster and easier.
- 3-point hitch to get the most out of your implements

Model	Engine HP	PTO hp @2200 rpm	Engine	Transmission	Weight without ballast ROPS base (lbs)
2600H Series					
2604H	45	38	Simpson 2.6L	8Fx2R sliding mesh	2WD-4597; 4WD-4927
2605H	55	46	Simpson 2.6L	2WD-8Fx2R; 8Fx8R synchro shuttle	2WD-4897
2606H	65	55	Simpson 2.6L	8Fx8R synchro shuttle	2WD-5115; 4WD-5710
2607H	74	67	Simpson 2.6L	8Fx8R synchro shuttle	2WD-5,269; 4WD-5,864



2600-2700 SERIES (45-74 HP)

This tractor can handle jobs ranging from Rotary Cutting to Loader Work and beyond.



Model	Engine HP @2600 rpm	PTO hp	Transmission	Weight (lbs)
2700E Series				
2705E	48.8	41.4	8x8 Synchro Shuttle or 3-Range HST	Gear 3,836 HST 3,880
2706E	57.3	48	8x8 Synchro Shuttle or 3-Range HST	Gear 3,847 HST 3,891

4600 - 4700 SERIES (74-101 HP)



Model	Engine HP	PTO hp	Engine	Transmission
4707	70	58	AGCO power 3cyl 3.3 L	Classic 4707:8Fx8R, 2 range
4708	80	68	AGCO power 3cyl 3.3 L	Classic 4708:8Fx8R, Synchro shuttle
4709	90	78	AGCO power 3cyl Intercooled turbo	Classic 4708:8Fx8R, Synchro shuttle
4710	100	88	AGCO power 3cyl Intercooled turbo	Classic 4710:12Fx12R2 Synchro shuttle



5700-6700 MID-RANGE (90-160 HP)

Massey Ferguson is pleased to announce the introduction of the first two models released as part of the new Series mid-range tractors. These tractors boast an all-new ultra-efficient 4-cylinder AGCO Power.



Model	Engine HP	PTO hp	Engine	Transmission
5710	<u>95@2200 rpm</u>	80	AGCO Power 4cyl, 4.4L Intercooled turbo charger	Classic 5710 & 5711 12Fx12R, 2 range
5711	<u>105@2200 rpm</u>	90	AGCO Power 4cyl, 4.4L Intercooled turbo charger	Classic 5710 & 5711 12Fx12R, 2 range
5711SL	<u>120@1900 rpm</u>	95	AGCO Power 4cyl, 4.4L Intercooled turbo charger	Dyna-4 16x16 Powershift Power Transmission
5712SL	<u>120@1900 rpm</u>	95	AGCO Power 4cyl, 4.4L Intercooled turbo charger	Dyna-4 16x16 Powershift Power Transmission
5713SL	<u>130@1900 rpm</u>	105	AGCO Power 4cyl, 4.4L Intercooled turbo charger	Dyna-4 16x16 Powershift Power Transmission



6600-6700 SERIES (115-160 HP)

Massey Ferguson is pleased to announce the introduction of the new 6700 Series line of mid-range tractors to North America. Five 6700 series models are available: 6712, 6713, 6714, 6715, 6716, each offering multiple configurations and options to tailor the machine to the exact needs of the customer and the job at hand. The entire line-up will boast an EPA Tier 4f compliant 4-cylinder engine from AGCO Power, and will range from 115 to 160 engine HP (99 to 140 PTO HP).



Model	Engine Hp	PTO hp	Weight (lbs)	Transmission
6614	140	100	12,500	Dyna VT (CVT)
6615	135,140	115	12,500	Dyna 6 16 x 16 Powershift
6616	150	120	12,500	Dyna 6 (24x24) or Dyna VT
6712	115	99	N/A	Deluxe:12Fx12R, 2 range Power shuttle
6713	125	109	N/A	Deluxe: 12F x 12R, 2 range Power shuttle
MF6714S	130	120	N/A	Dyna -VT
MF6715S	140	130	N/A	Dyna-4, Dyna 6 or Dyna-VT
MF6716S	160	140	N/A	Dyna-6 or Dyna-VT



7700-8700 HIGH HORSE POWER (140-370 HP)



Model	Max Engine (HP)	Weight (lbs)	Transmission
MF 8727	270	23,810	Dyna-VT (CVT)
MF 8730	295	23,810	Dyna-VT (CVT)
MF 8732	320	23,810	Dyna-VT (CVT)
MF 8735	350	23,810	Dyna-VT (CVT)
MT 8737	370	23,810	Dyna-VT (CVT)

Challenger

MT 400E SERIES (105-120 PTO)



Utility Tractors

Model	PTO HP	Engine hp	Cylinders	Engine	Transmission
MT 400E Series					
MT 455E	105	110	4	AGCO Power intercooled turbo	AutoPower IV
MT 465E	110	120	4	AGCO Power with e3	AutoPower IV
MT 475E	120	130	4	AGCO Power intercooled turbo	TechStar CVT
MT 485E	130	135	4	AGCO Power with e3	AutoPower 4 or TechStar CVT
MT 495D	125	140	4	AGCO Power intercooled turbo	AutoPower 4 or TechStar CVT



MT 500E SERIES (110-195 PTO)

High Horsepower Row Crop Tractors

Model	Engine	Displacement	Max Engine hp (kW)	PTO hp (kW)
MT 500E Series				
MT 555E	AGCO Power™	6.6L	185 (138)	145 (108)
MT 565E	AGCO Power™	6.6L	200 (149)	155 (116)
MT575E	AGCO Power™	7.4L	215 (160)	165 (123)
MT 585E	AGCO Power™	7.4L	235 (175)	180 (134)
MT595E	AGCO Power™	7.4L	255 (190)	200 (149)
MT515E	AGCO Power™	6.6L	140 (104)	115(85)
MT525E	AGCO Power™	6.6L	150(111)	120(89)
MT535E	AGCO Power™	6.6L	160(119)	125(93)
MT545E	AGCO Power™	6.6L	175(130)	135(100)

Challenger

MT 600E SERIES (205-290 ENGINE PTO HP)



Wheeled Tractors

Model	Engine	Max Engine Hp (kW)	PTO hp (kW)
MT 600E Series			
MT 645E	AGCO Power™ 8.4L	270 (199)	205 (151)
MT 655E	AGCO Power™ 8.4L	295 (220)	225 (168)
MT 665E	AGCO Power™ 8.4L	320 (239)	250 (186)
MT 675E	AGCO Power™ 8.4L	350 (261)	275 (205)
MT 685E	AGCO Power™ 8.4L	370 (276)	290 (216)



MT 700 E SERIES (350-400 ENGINE HP)

Track and Articulated Tractors

Model	Engine hp	PTO HP	Engine
MT 700E Series			
MT 755E	355	284	AGCO Power 9.8L
MT 765SE	380	310	AGCO Power 9.8L
MT 775E	405	334	AGCO Power 9.8L

Challenger



MT 800 E SERIES (365-425 ENGINE HP)

Everyone talks horsepower, but true power can only come from torque. Our largest and most powerful track machine delivers unrivaled torque to quiet the talk. Driving the MT800E is an AGCO POWER™ engine that's engineered solely for the demands of agricultural applications. Nothing comes close when you need to power through the toughest tillage applications without losing speed or torque.

Track and Articulated Tractors

Model	Engine hp	PTO hp	Engine
MT 800E Series			
MT 845E	460	365	AGCO Power™ 16.8L
MT 855E	500	400	AGCO Power™ 16.8L
MT 865E	550	425	AGCO Power™ 16.8L
MT 875E	600	425	AGCO Power™ 16.8L

MT 900C SERIES (440-585 ENGINE HP)

Special Application Tractors

Model	Engine	Engine hp (kW)
MT 955E	AGCO Power™ 16.8L	500 (365)
MT 965E	AGCO Power™ 16.8L	550 (402)
MT 975E	AGCO Power™ 16.8L	600 (440)



MT 1000E SERIES

Though a Challenger 1000 Series tractor is a highly sophisticated machine, the Tractor Management Center makes it simple to operate. All functions whether in the terminal or on the multi-function armrest are color coordinated to the controls that operate them, and the ergonomic design keeps all tasks and functions comfortably within the operator's reach, reducing time and fatigue. With one hand on the wheel and one hand on the multi-function joystick, you're in total control at all times.

1000 Series

Model	Engine hp	PTO hp	Transmission
1038	396	350	Stepless Accu-VT Transmission
1042	435	386	Stepless Accu-VT Transmission
1046	476	421	Stepless Accu-VT Transmission
1050	517	453	Stepless Accu-VT Transmission

RoGator® TerraGator®

ROGATOR

“Fields don’t forgive.” When you’re applying thousands of acres, with unpredictable weather and a short window of opportunity, you’ve got to make every minute count. The drive package gives you more horsepower than ever before and matches it to payload capacity, so you get more consistent field and road speeds with far greater fuel efficiency. With easy serviceability, large product tanks, a one-level catwalk and outstanding visibility, it’s no wonder RoGator is the choice of nearly every professional applicator in the nation.”



Model	Engine	HP	Speed	Weights 60/80-ft Boom, Fuel & Hydraulics
RG700	AGCO Tier 4i	165	0-18 mph	19,500
RG900	AGCO Tier 4i	280	0-33 mph	27,850
RG1100	AGCO Tier 4i	311	0-33 mph	28,390
RG1300	AGCO Tier 4i	339	0-36 mph	31,890



TERRAGATOR

The TerraGator® product line was introduced by the Ag-Chem Equipment Company in 1973 with the first three-wheel applicator featuring high floatation tires. A five-wheel applicator, nearly twice the size of the original model, was introduced in 1976 to meet the needs of customers with larger operations. Other models followed with various tire configurations and specifications to help operators increase efficiency and productivity.

Model	Engine	HP	Chasis	Dry system delivery capabilities
TG7300/TG8300	AGCO Tier 4i	330	3 wheel	310 cu ft
TG9300B	Cat C-13 Tier III	425	3 wheel	355 cu ft
TG8400	AGCO Tier 4i	365	4 wheel	310 cu ft



REAR GRADE BOOM MOWERS

Available 21, 22, 23, 25, 28 and 30 ft.

At **Diamond Mowers**, we believe that no task should be beyond your grasp. Our Boom Mowers are available in a variety of lengths and cutting heads, so whether you're dealing with ditches, guardrails, fences, or a tricky slope, we've got you covered. For decades, Diamond has manufactured the toughest, smartest, most reliable and safest equipment in the industry. And we back it up with unmatched customer support, a 72-hour parts guarantee, and a 30-day satisfaction guarantee. DEMAND THE BEST. DEMAND DIAMOND.





Since 1946, Woods has grown to become the undisputed mowing expert. This legacy began with development of the first tractor-mounted rotary cutter and continues today with unmatched product innovation and service.

Put our products to the test in your own back yard. Rugged, dependable and productive – Woods rotary cutters are designed for the extremes of real world use. No matter if you're cutting brush or mowing pastures, Woods has the rotary cutter to fit your needs. Woods rotary cutters – dedicated to craftsmanship and innovation for more than 60 years.

- Blades**
- Rakes**
- Post-hole diggers**
- PTO driven chipper & grinder**
- Flail shredder**
- Harrow, seeder**





FINISH MOWERS



ROTARY CUTTERS



For those who demand a professionally groomed lawn, Woods high-performance finish mowers ensure a clean, crisp, manicured appearance year after year. Our unique rounded front, tapered-side rear discharge deck allows you to mow with better maneuverability – reducing trim time and increasing productivity. Heat-treated, alloy steel blades provide maximum performance and precision cutting for all your lawn care applications. The combination of a deep deck, baffling and unique rear discharge design ensures premium results – making Woods synonymous with “cut quality.”

You'll look forward to using and maintaining your equipment with many features that focus on your drive for a high-quality cut in record time.

Often imitated, but never duplicated, Woods offers a full line of rugged, high-quality attachments with innovative features that increase productivity, maximize performance, and minimize down time – whether they're needed for commercial use or general lawn care projects. Over 55 years of experience engineering and manufacturing landscape equipment has created a line of reliable, high-quality tools to meet, and exceed, the demands of our customers from professional landscapers to property owners. Trust Woods for all your landscaping needs.



SMITH CHALLENGER SCM 100

Brush

- 77.5" (100% Poly or 50% Poly/50% Wire)
- Replacement: 35" x 84"
- Drive hydraulic
- Float system
- Frame lift: approx. 36"
- 35" diameter tube style brush
- Park valve
- Quick change system
- Sweeping angle: 40° right-0- 40° left (hydraulic)
- Weight: Approx. 1400 lbs
- Oil capacity: 24 gallons (varies slightly per tank design)
- Grease fittings and replaceable bushings
- Self cooling oil reservoir
- PTO driven pump – 3000 psi rated PTO pump
- Dirt deflector



**HEAVY DUTY CONSTRUCTION
FOR LONG LIFE AND
LESS MAINTENANCE.**



OPTIONS

- Water mist system
- Brush hood extension
- 89.5" brush length
- Custom tires and wheels
- Customized engine air filtration
- Rear mount scrape blade
- Customized A/C inlet filter
- Side shift brush frame
- Variable speed brush rpm

**BEST COMBINATION
FOR PERFORMANCE,
DURABILITY
AND VERSATILITY**



NEW SERIES MASSEY FERGUSON CAB/AIR TRACTOR MODEL MF4607M

- 2 wheel drive 56 PTO horsepower / three cylinder diesel engine
- 19.5L24 rear R4 industrial bar type or diamond tread tires / 11L-15 front tires
- 12 x 12 power shuttle with wet clutch (little or no clutching required) audible
- alarm if operator rides the clutch
- Independent PTO / power steering / 3 point hitch
- Heavy duty front spindles to support front broom
- Joy stick control for broom function
- Adjustable pressure down system
- Modified cab air-conditioning filtration system
- Increased visibility to broom for safety and productivity
- Modified engine intake
- Standard with horn



OPTIONAL EQUIPMENT

- Back up alarm
- Strobe light, top and tilt kit for box blade
- Water mist system with tank
- Auto-lube for broom
- Heavy duty alternator, side shift broom head, front engine drive (free up rear PTO), and several tire options.



SNORKELED ENGINE AIR INTAKE



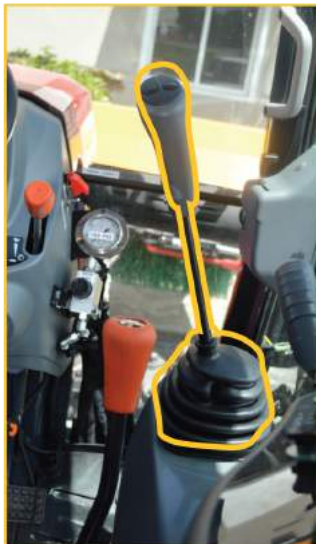
Engine intake is modified to take in air at the highest point of the cab, increasing engine life and service intervals. Cleaner air enters the engine away from most of the broom dust.

MODIFIED AIR-CONDITIONING FILTRATION SYSTEM



Standard cab filter was replaced with same size filter as the tractor engine. The filter was moved to the rear of the cab where it takes in cleaner air. The cab is pressurized to improve operator comfort and safety. This increases filter life and serviceability.

PRESSURE GAUGE AND DOWN PRESSURE WITH FLOAT CONTROL



The integrated joystick controls all functions on the broom (up, down, right-to-left angle), decreasing operator fatigue and improving production. Simple design vs. the old style toggle switches or levers, allows operators to monitor their work and not worry about switches or levers.



Pressure gauge and down pressure dial is mounted in front of operator. The operator can easily monitor the function of the broom. A new design float control decreases fuel burn and extends broom refill life. A turn of the dial can increase pressure down on the broom for areas that are lower or tougher to clean.

ABI irrigation

MICRO SERIES TRAVELERS

The Micro Series travelers are ideally suited for Sportsfields, Turfgrass, Pastures and crops requiring irrigation at an affordable cost. These traveling irrigation systems make portable irrigation a simple matter, requiring less labor than conventional portable systems while being an excellent low cost alternative to in-ground sprinkler installation. Micros operate unattended and are all fitted with automatic shut-off valves as standard.



Model	Acres per pull	Hose Length (ft)	PSI	GPM
25 series	0.5-.07	165	32-50	6-12
32 Series	0.5-0.7	295	30-90	7-16
405-405/SS	0.5-0.8	425	35-95	13-32
505-505/SS	1.7-3.2	580	65-140	29-95



GX SERIES TRAVELERS

The GX series of travelers provide economical irrigation using an efficient, accurate and patented turbine drive system with a low pressure requirement. The simple drive system features an integral gearbox and turbine assembly directly driving the reel with accurate speed compensation and achieving the high speeds required for light application of water to delicate crops

Model	Acres per pull	Hose Length (ft)	PSI	GPM
GX 540	2.9-3.6	620	40-130	40-130
GX 560	3.0-5.3	525-985	70-145	40-210
GX 570	4.4-6.9	850-1150	70-140	60-235
GX 581	6.0-7.9	720-1150	80-145	120-450
GX 690	6.7-11.5	820-1210	90-150	220-575
GX 790	8.8-12.3	1115-1312	90-150	220-575
GX 890	7.4-10.8	1250-1312	90-150	255-660

ABI irrigation

JX SERIES TRAVELERS

The JX series travelers provide the operator with simple set-up and operation with fingertip hydraulic controls. The standard hydraulics operate the jack, wheels, stabilizer legs, making large scale irrigation an easy low-labor operation. As the wheels lift up, the machine is lowered gently on the ground giving additional stability and enabling the wheeled cart to load and lift itself automatically into the transport position at the end of the irrigation cycle.



Model	Acres per pull	Hose Length (ft)	PSI	GPM
JX 600	6.7-11.5	820-1210	90-150	220-575
JX 700	8.8-12.3	1115-1312	90-150	220-575
JX 800	8.8-13.8	1250-1640	90-150	220-650
JX 900	10.7-14.4	1312-1640	90-140	330-650
JX 1000 Major	12.4-18	1640-2200	90-150	300-650



IRRIGATION BOOMS

Low-pressure irrigation booms are ideal for situations where high wind conditions are a problem or where extremely light applications are required for seedbeds and delicate crops. They can also be used for wastewater applications with little or no solids, applying the liquid close to the ground and eliminating wind-drift and odor problems.

Model	Works with
45 ft boom	GX 540 series
65 ft boom	GX 560, GX 570
100 ft boom	GX 570, GX 581
130 ft boom	GX 581, GX 690, GX 790
165 ft boom	GX 690, GX 790

Model	Flow (GPM)	Pressure (PSI)	HP
TL Series	50-1000	65-184	20-94
TLK Series	50-1000	65-184	20-94
FL Series	50-1000	65-184	20-94
SL Series	50-1000	65-184	20-94
TCK Series	NA	NA	NA

Model	Flow (GPM)	Pressure (PSI)	HP
TOF-50	25-145	54-85	7.5
T Series	60-1000	75-182	10-97
TK Series	50-660	143-239	42-170
MB Series	800-4400	11-37	32-56
F Series	100-2750	31-229	13-135
SK Series	200-1000		42-170



DISC HARROWS

The Model 1212 Disc Harrow is Sunflower's discing answer for America's smaller farmers. It is available in rigid models only and matches tractor horsepower in the range of 110 and lower. With exception of gauge wheels the 1212 has all of the same outstanding features common to the 1233. It's tough, heavy and capable of performing primary and finish discing operations. Like all discs from Sunflower, the 1212 truly meets the toughest standards, earning the label of America's best built disc.

- Tractor horsepower requirement range 5 to 8 horsepower per foot of cut
- Built with the same outstanding features common to the larger Model 1234
- C-Flex™ bearing hangers absorb disc gang shock, prolonging bearing and frame life
- Capable of performing primary and finish discing operations
- Features 335 lb. - 396 lb. per foot of cut
- Cutting widths available from 10' to 15'
- Safety light kit and SMV sign are standard equipment

Sunflower Disc Harrows

Models	Working widths
1212	10' to 15'
1234	18' to 32'
1300	32' to 36'
1435	37 & 40'
1444	41 & 42'
1544	42' & 45'
1710/1730	11' to 24'11"
1810/1830	22' to 39'





Perfect Balance Of Engineered Toughness & Intelligent Design

Since 1962, Degelman Industries has pioneered the perfect balance of engineered toughness and intelligent design. The result is outstanding equipment that exceeds expectations and outperforms. We achieve this through meticulous design and vigilant customer service.

Every day, the designers in our state-of-the-art research and development facility work tirelessly to provide mounting solutions to fit the ever-growing population of tractor models and manufacturers—more than 450 models and counting. If it has our name on it, we expect nothing short of optimal performance

Dozer Blades

Dozer Series	3500	4600/5700	5900	66/69/7200	7900
Tractor Horsepower Range	40-100 HP	65-275 HP	125-325 HP	200-500 HP	300-600 HP
Tractor Type	2WD & FWA	2WD & FWA	2WD & FWA	4WD	4WD
Blade Widths Available	8', 9', 10', 12'	9', 10', 12', 14'	10', 12', 14'	12', 14', 16'	12', 14', 16', 18', 20'
Blade Weight	1350-1540 lbs	2050-2950 lbs	3390-3660 lbs	3365-5055 lbs	5165-7650 lbs
Blade Height (standard)	27"	33"	36"	38"	47"
Blade Height (with top extension)	34"	40"	43"	45"	-
Blade Height (with silage extension)	47"	57"	60"	62"	71"
Lifting Height (approximate)	20"	23"	23"	25"	40"
Lift Cylinders	3" x 8"	3 1/2" x 8"	3 1/2" x 8"	3" (or 3 1/2") x 16"	3 1/2" Dia
Hydraulic Angle (degrees)	18 / 30	18 / 30	24	16 (6600 manual angle)	24 - 30
Angle Cylinders	2 1/2" x 16"	3" x 16"	3" x 20"	4" x 25 1/2"	4" Dia
Hydraulic Vertical Tilt (degrees)	n/a	n/a	15	13 (7200 model only)	10
Tilt Cylinders	n/a	n/a	3" x 8"	4" x 8" (7200)	3 1/2" Dia
Cutting Edge (MaxTemp Steel)	5/8" x 6"	5/8" x 6"	5/8" x 6"	5/8" x 6"	3/4 x 8"
Digging Depth	6" to 8"	6" to 10"	10" to 14"	8" to 12"	14" to 17"
Skid Shoes (abrasion resistant)	Standard adjustment	Standard adjustment	Standard adjustment	Standard adjustment	Variable adjustment
Mounting System	D-lock® Quick-Tach	D-lock® Quick-Tach	D-lock® Quick-Tach	D-lock® Quick-Tach	D-lock® Quick-Tach
Mounting Location	Rear Axle	Rear axle/Mid-mount	Mid-Mount	Front-4WD Mount	Front-4WD Mount
Mouldboard (ripple formed blade)	10 ga	3/16"	3/16"	3/16"	1/4"



3500



4600/5700



5900



66/69/7200



7900



M SERIES

Degelman Tough

How do you build the best manure spreader in the world? Start with Degelman, renowned for building legendary equipment for the past 50 years. The design is unmistakably Degelman. After five years of design, development, and intensive testing, Degelman introduces the most rugged spreaders available - the Degelman M Series. From the ground up, these machines have been designed with rocks in mind, from its proprietary retractable free-swing flails, super duty gearbox, smooth sidewalls and heavy-duty frame to its clean gate opening.



Rock Bypass System (RBS)

Up until now, all spreaders in the world employ beaters made from some variation of a helical or auger shape. This inherently rigid design is always vulnerable to rock damage and high maintenance costs. The Degelman ROCK BYPASS SYSTEM (RBS), the heart of the M series, is nothing short of revolutionary. Five rows of free-swing flails, not only collapse upon stone impact, but will exceed expectations for throw distance, durability and even distribution pattern.

Degelman manure spreaders cut and tear material, drop heavier crumbled material to the next lower set of paddles for final processing and discharges material over 60 feet.

ROCK REMOVAL

PRONG PICKER R570P

The R570P Prong Rock Picker has tremendous strength for a small machine. This fork-type rock picker is ideal for picking anything from a two pound stone to a 3000 pound boulder.



Exceptional Quality

These proven rugged machines are ideal for land clearing and reclamation applications.

Used for years by professional landscapers, contractors and farmers, the Degelman Prong Rock Picker and Digger are designed to clear big stones, boulders and for selective rock picking.

Durability

The entire machine is a simple forklift design with one moving part. The machine incorporates spring steel tines that won't bend or break, and will last a lifetime. The mainframe is constructed with a double-tubing design, while the high quality twin Degelman hydraulic cylinders provide the power.

Capacity

The prong is equipped with a 1-1/2 cubic yard capacity hopper.

ROCK DIGGER RD320

Fast, Efficient Windrowing. Exceptional Quality

Used across the globe for over 35 years, the RD320 has earned a reputation for fast, efficient windrowing in rock-strewn land. Augmented with real-world testing and customer feedback, the original, patented design delivers exceptional quality in a low-maintenance package. Built with durability in mind, robust components like the chain-driven drum and long-lasting bearings raise the bar for performance-driven rock management. The 14' wide spiral drum rakes a large swath of rocks from the field with each pass, yet the entire machine folds into a 7-1/2' narrow transport width with 10" of ground clearance - ideal for navigating narrow bridges and gates.



Windrowing Rock

Moving randomly distributed rocks into windrows allows for convenient picking. Capable of forming single or double-windrows, the RD320 means less passes through the field when removing rocks.

ROCK RAKE RR1500

Fast, Efficient Windrowing. Exceptional Quality

Used across the globe for over 35 years, the RR1500 has earned a reputation for fast, efficient windrowing in rock-strewn land. Augmented with real-world testing and customer feedback, the original, patented design delivers exceptional quality in a low-maintenance package. Built with durability in mind, robust components like the chain-driven drum and long-lasting bearings raise the bar for performance-driven rock management. The 14' wide spiral drum rakes a large swath of rocks from the field with each pass, yet the entire machine folds into a 7-1/2' narrow transport width with 10" of ground clearance - ideal for navigating narrow bridges and gates.



Windrowing Rock

Moving randomly distributed rocks into windrows allows for convenient picking. Capable of forming single or double-windrows, the RR1500 means less passes through the field when removing rocks.

SIGNATURE ROCK PICKERS 6000/7200

The Industry Standard

The Degelman Signature series rock pickers are the result of over 50 years of pursuing excellence. Degelman rock pickers are unrivalled for performance and durability and the industry standard. Our attention to details means these machines will work flawlessly for years to come, as you will find Degelman rock pickers made 50 years ago still working today.



Superior Rock and Soil Separation

Degelman rock pickers are designed to pick up stones quickly, efficiently and with a minimum of soil collection. The geometry between reel and grill is designed so that the paddle makes the first contact, lifts and spins the stones onto the grill further separating the rock from the soil.

The unique interlaced grill and paddle teeth drop dirt easy onto the field. Even the hopper box makes use of grated spring bar strapping to keep rocks in and dirt out.



ROME PLOWS

Kelly Tractor Co. can order Rome Plows for your agricultural needs. These plows are preferred by our sugar cane customers and can be used in many agricultural applications.

Contact us today at 239-693-6363 x 329 for more information.



Agricultural Disc Harrows



Carry All Scrapers



Construction Disc Harrows



Ejection Land Levelers



Laser Land Levelers



Motor Grader Slopers



Subsoilers and Rippers

Marden®

Marden has been the leader in developing a wide and diverse range of Brush Cutters (Choppers) for the last 70 years. We have many different models to choose from, and also custom design for specific needs.

BRUSH AND WEED CUTTERS

SHL7-30

Single-Drum Hydraulic units are designed especially for intensive brush management on shooting preserves and game ranches.



SHL7-30

L10

L Series of Cutters are used primarily as a maintenance unit in controlling growth as well as developing fringe habitat.

M10

M Series of Cutters are designed for clearing brush that will be converted into improved pasture, or strip chopping for wildlife improvement.

B10GK

B Series of Cutters were developed for heavy clearing such as forestry cut-overs, heavy mesquite and cedar.

PASTURE RENOVATORS

The Marden Pasture Renovators are designed for a variety of uses including clearing brush for ranching, enhancing wildlife habitat, renovating sod bound compacted pastures, and even establishing seed beds for overseeding winter grasses.

SHPR12-42



SHPR12-42

Single Drum units are available in many different drum diameters and widths. With optional hydraulic wheel lift. These units can also be transported readily on ranch roads.

HPR12-20

Tandem Hydraulic units are a preferred choice in Pasture Renovators due to the two drums working in an offset arrangement. **HPR12-30B**

SUB-SOIL PLOWS

CRP122

CRP122

Two-Arm Ripper/Coulter Plow - with rear mount single cylinder fold up lift. This unit while operating on a float valve can maintain a continuous 16" to 18" ripper depth while contouring.



Marden®

SUB-SOIL PLOWS

CRP152

Two-Arm Ripper/Coulter Plow with rear mount single cylinder fold up lift.

CRP154

Four-Arm Ripper/Coulter Plow with rear mount single cylinder fold up lift.

DBCR150

Series Plows come in either 2 arm or 4 arm configuration with a drawbar. Ripper/Coulter

VERSA-TILL PLOWS

CR4L

Rear mount, 4 point parallel lift with coulter and ripper assembly designed for the SK300, SK250 and CAT545 rubber tire tractors.

CR4L



CR4LS

Rear mount, 4 point parallel lift with coulter and ripper assembly and also swivel body. Designed for Cat D7 and D8 size tractors.

V-SHEARS

Our V-Shears are designed and fabricated around Cat C-Frames for extra strength and durability.

CURVED FACE V-SHEAR

Designed to pass debris along the edge with the patented curved face, this shear works well in the large diameter pine and hardwood forests west of the Mississippi River. D6, D7, D8 size dozers.

MAXI-SPLIT V-SHEAR

Designed to work in the second generation pine plantation. This model is lighter and shorter than our Curved Face unit, but still very durable. D6, D7, D8 size dozers.

VR HYDRAULIC-RELIEF V-RAKES

Designed to move and align slash and debris while plowing. With the Hydraulic-Relief teeth, they can operate in unshered ground helping to reduce site-prep costs.



SUPERTRAK, Inc.® is a Florida Corporation formed in 1986. We are an original equipment manufacturer (OEM) company utilizing Cat® components. We design and manufacture a complete line of vegetation management and land clearing units - from 100hp to 400hp - rubber-tired, track and excavators.



SK 170 RTL



SK 140 STR-C



WB55 Bio-Baler

Model	Engine	HP	Fuel Tank (Gal)	Base Unit
SK140 RTL	CAT®C 4.4	140	40	CAT® 908
SK140 CTL-C	CAT®C 4.4 ACERT	140	50	Compact Track Loader
SK140 CTLS-C	CAT®C 4.4 ACERT	140	50	Compact Track Loader
SK140 TR-C	CAT®C 4.4 ACERT	140	50	Compact Track Loader
SK170 RTL	Cat®C 4.4	170	40	Cat 908H

Bio-Baler

Model	Cutting Width (ft)	Power (Min)	Hydraulics	Weight (kg)
WB 55	7.5	130	3 Outlets	4500



BUILT TOUGH FOR YOUR MOST RUGGED HAULS

Get The Whole Story

Outstanding service, a complete line of heavy equipment trailers, a reputation for quality and our attention to the details prove --You Just Can't Do Better Than A Belshe Trailer.

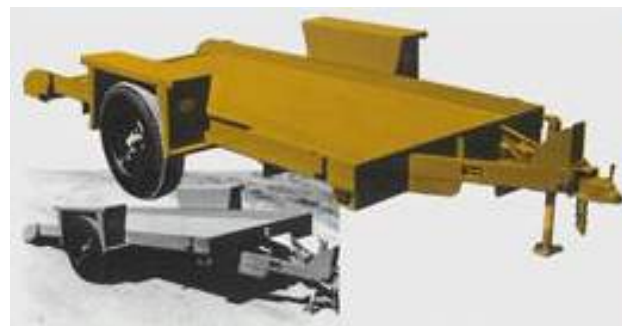
A rugged, well-built trailer is just as important as the equipment you haul on it. That's why we're confident that you will appreciate the trailers and service you receive from Belshe Industries, Inc. and our network of dealers.

First-Class Facilities, Equipment and Personnel

At Belshe Industries, we use over 80,000 square feet of building space and 13 acres to manufacture our trailers. Just a partial list of our equipment includes a 500 ton shear with a 20 foot table, a 500 ton brake, state-of-the-art drill presses, engine lathes and pattern torches. Our trailers are built by skilled craftsmen who take pride in their workmanship. And since we build them right, we can back our trailers with one of the industry's best warranties. Facilities, equipment and personnel like ours guarantees that Belshe heavy equipment trailers are built to stand up to rugged use.

Model	Capacity (lbs)	Axle	Bed Size (L x W)
Tilt Bed			
WB-1	6,000	Single	12' x 71"

Fold Up Ramps			
WB-2	10,000	Tandem	14' x 76"
T9-2EP	22,000	Tandem	18' x 96"
T4-3EP	18,000	Triple	18' x 96"
T2-3EP	18,000	Triple	16' x 82"
BF9T-2EP	18,000	Tandem	16' x 82"
T16-2EP	16,000	Tandem	14' x 81"
T1-2EP	12,000	Tandem	14' x 81"
T10-2AP	40,000	Tandem	20' x 96"
GT-2EP	8,000	Tandem	16' x 96"
FB30-2EP	30,000	Tandem	20' x 96"
FB9T-2EP	18,000	Triple	18' x 96"
DT255-2EP	25,500	Tandem	20' x 96"
DT21-3EP	21,000	Triple	18' x 96"
DT235-2EP	23,500	Tandem	20' x 96"



INTERSTATE

The Interstate Line of trailers provides all your transportation needs. Our full line can transport from 4 tons to 50 tons of equipment. Built to last, Interstate trailers are built with High Tensile continuous main beams and interlocking crossmembers. The trailers are designed to ease the problems of loading and unloading, with our versatile ramp configuration. The EASY O'BACK ramp spring makes raising or lifting the ramps almost effortless.

INTERSTATE GOOSENECKS

Model	Weight Cap. (000/lbs)	Trailer Weight (lbs)	Overall (L x W)	Platform (L x W x H)
Goosenecks				
G12 BST	12	5,100	21' x 96"	20' x 96" x 34"
G16 BST	16	5,100	28'3" x 96"	20' x 96" x 34"
G18 BST	18	5,200	27'3" x 96"	20' x 96" x 34"
G20DT	20	5,900	32'3" x 96"	24' x 96" x 34"
G24DT	24	5,900	32'3" x 96"	24' x 96" x 34"
G40TDL	40	10,900	38'4.5" x 96"	24' x 96" x 38"
G50TDL	50	14,400	40'4" x 96"	26' x 102" x 38"
50 LBG	50	10,900	38'1" x 96"	18' x 96" x 32.5"
70 LBG	70	12,000	38'1" x 96"	18' x 96" x 33"
70 PHT	70	17,900	25' x 102"	25' x 96" x 35"
70 SDGN-AR	70	16,200	46' x 96"	24' x 96" x 24"
70 SDGN/H7	70	16,200	46' x 96"	24' x 96" x 24"
102SDGN	102	19,600	51' x 96"	24' x 96" x 24"
110SDGN	110	20,500	51' x 96"	24' x 96" x 24"



G18DT

INTERSTATE TILTBEDS



24 TDA

Model	Weight Cap. (000/lbs)	Trailer Weight (lbs)	Overall (L x W)	Platform (L x W x H)
Tiltbed Trailers				
12TST	12	3,600	21'6" x 102"	16' x 80 1/2" x 27 1/2"
14TST	14	4,200	23'6" x 102"	16' x 82" x 27"
16TST	16	3,700	23'6" x 102"	16' x 82" x 27"
20 APC	20	5,900	34'3" x 96"	24' x 96" x 38"
24 TDT	24	7,300	29' 11" x 96"	24' x 96" x 37.5"
30 TDE	30	9,100	30' x 96"	24' x 96" x 38"
40 TDL	40	9,100	30' x 96"	24' x 96" x 38"
50 TDL	50	13,600	37' 3.5" x 96"	26' x 96" x 38"

INTERSTATE TAG-ALONGS

Model	Weight Cap. (000/lbs)	Trailer Weight (lbs)	Overall (L x W)	Platform (L x W x H)
Tag-Alongs				
10 ST	10	2,730	19'8" x 96"	14' x 81" x 26"
12 BST	12	4,575	27'3" x 96"	21' x 102" x 27"
12BTS-S	12	4,575	27" x 96"	21' x 102" x 27"
12RBS	12	3,250	24'3" x 102"	18' x 82" x 22 1/2"
14 PBS	14	4,800	26'9" x 96"	20'6" x 102" x 23"
14 RBS	14	3,250	24'3" x 102"	18' x 82" x 22 1/2"
16 BST	16	4,750	27'3" x 96"	20' x 60" x 35"
16 BST-S	16	4,750	27'3" x 96"	21' x 81 1/2" x 24 1/2"
16 PBS	16	4,800	20'6" x 80"	20'6" x 102" x 23"
18 BST	18	4,850	27'3" x 102"	20' x 34" x 54.5"
20 DT	20	5,900	29' x 96"	24' x 34" x 60"
20 DTA	20	5,900	29' x 96"	24' x 34" x 60"
24 DT	24	6,250	29' x 96"	24' x 34" x 60"
24 DTA	24	6,250	29' x 96"	24' x 34" x 60"
30 DLE	30	7,600	30' x 96"	24' x 36" x 60"
40 DLA	40	7,600	30' x 96"	24' x 36" x 60"
50 DLA	50	10,150	35' x 96"	29' x 36" x 60"



8 ST



We know that you want a return on your investment. That's why we build trailers that last. Towmaster Trailers builds quality, durable trailers with standard features designed for the long haul. Features like I-beam crossmembers, wide-flange beam main frame, hard white oak decking and name brand components. Towmaster and Conrail trailers work hard for you, so you can stay on task and get the job done on time. Invest in your future next time you're looking for a trailer that lasts. Towmaster is the standard to which others compare.



Model	Gross Vehicle Weight Rating (lbs)	Trailer Weight (lbs)	Payload Rating (lbs)
Drop Deck Tilt			
T-3DT	4,600	1,100	3500
T-5DT	8,000	2,000	6000
T-9DT	9,900	3,800	6190
T-10DT	13,800	3,800	10000
T-12DT	12,000	3,900	12000
T-14T	18,300	4,300	14000
T-16T	20,400	4,400	16000

Model	Gross Vehicle Weight Rating (lbs)	Trailer Weight (lbs)	Payload (lbs)
Deck Over Tilt			
TC-9D	9,990	2,600	7390
TC-10D	12,600	2,600	10000
TC-12D	14,600	2,600	12000
TC-14D	16,600	2,700	14000
T-9D	9,990	3,100	6890
T-10D	13,100	3,100	10000
T-12D	15,100	3,100	12000
T-14D	18,200	4,200	14000
T-16D	20,600	4,600	16000
T-18D	22,600	4,600	18000
T-20D	24,600	4,600	20000
T-9P	9,990	3,100	6,890
T-10P	13,100	3,100	10000
T-12P	15,100	3,100	12000

Model	Gross Vehicle Weight Rating (lbs)	Trailer Weight (lbs)	Load Width (in)
Detachable Gooseneck			
T-70DTG	70,000	15,200	102
T-100DTG	100,000	18,800	102
T-110DTG	110,000	19,160	102
T-120DTG	120,000	20,000	102

Model	Gross Vehicle Weight Rating (lbs)	Trailer Weight (lbs)	Load Width (in)
T-70HT	87,800	17,800	102
T-110HT	132,800	22,800	102

Model	Gross Vehicle Weight Rating (lbs)	Trailer Weight (lbs)	Load Width (ft-in)
T-50RG	61,500	11,500	102
T-70RG	85,600	15,600	102

Model	Gross Vehicle Weight Rating (lbs)	Trailer Weight (lbs)	Load Width (in)
Hydraulic Dump			
T-5HD	6,500	1,500	60
T-9HD	9,900	2,600	82
T-10HD	13,700	4,300	82
T-12HD	15,700	4,300	82
T-14HD	17,800	4,400	82

FELLING TRAILERS

Trailers

FELLING TRAILERS

Before any manufacturing begins, every trailer undergoes a strict design review with our Engineering Team. Whether it is one of our 24 unique trailer styles or a custom trailer that we have built for your specific application you can be certain that your trailer is going to be one of the best engineered products in the industry

To begin the construction phase, beams and cross-members are cut to each trailer's specifications. Many of our components are cut by our Hankwang laser table to ensure accurate & repeatable quality for every trailer. For fabricated beams we use the laser table to cut the web and the flange of each beam, then fused together with Felling's Custom Buggo Side Beam Motion System (Beam Welder).



FT-6CL

Compact Loader Series
Perfect for Skid Steer Loaders

Model	GVWR (lbs)
FT-6 CL	7,000
FT-10-CL	9,980
FT-12 CL	14,900



X Force Hydraulic Detachable Goosenecks

XF-110-2HD63

Model	Payload Capacity	Gooseneck
XF-70-2 HDG	70,000 lbs in 16 ft	11' hydraulic detachable
XF-70-2 HDG-L	70,000 lbs in 16 ft	11' hydraulic detachable
XF-100-3 HDG	100,000 lbs in 16 ft	11' hydraulic detachable
XF-100-3 HDG-L	100,000 lbs in 16 ft	11' hydraulic detachable
XF-120-3 HDG	120,000 lbs in 16 ft	13' hydraulic detachable
XF-120-3 HDG-L	120,000 lbs in 16 ft	13' hydraulic detachable

Drop-Deck Lines

I-Series

Model	GVWR (lbs)
FT-10i	9,980
FT-12i	14,700
FT-14i	17,200
FT-15i	17,900
FT-16i	19,600
FT-20i	24,000

E-Series

Model	GVWR (lbs)
FT-10E	9,980
FT-12E	14,700
FT-14E	17,200
FT-15E	17,900
FT-16E	19,600
FT-18-3	21,800
FT-20E	24,000
FT-20-3	24,000
FT-24-3	28,000

L-Series

Model	GVWR (lbs)
FT-10L	9,980
FT-12L	14,700
FT-14L	17,200

Aluminum Series Trailer

Model	GVWR (lbs)
FT-10A	9,980
FT-12A	14,050
FT-14A	16,400
FT-15A	16,900
FT-10AP	9,980
FT-12AP	14,050

Pan Series Models

Model	GVWR (lbs)
FT-10 (W, FP, P, G)	9,980
FT-12 (W, FP, P, G)	14,700
FT-14 (W, FP, P, G)	17,200
FT-16 (W, FP, P, G)	19,600

FELLING TRAILERS



FT-12I



FT-24



Utility Pole Trailers

Model	GVWR (lbs)
FT-7-1-PT	7,000
FT-8-1-PT	8,000
FT-9-1-PT	9,000
FT-10-1-PT	9,980
FT-12-1-PT	16,800
FT-14-2-PT	19,000
FT-15-1-PT	20,200
FT-20-1-PT	25,500
FT-20-2-PT	25,500
FT-24-2-PT	30,200
FT-12-2-PT-C	17,200
FT-14-2-PT-C	19,400
FT-16-2-PT-C	21,600



FT-8-P

Cable Reel & Coil Series

Model-Reel	GVWR (lbs)	Model-Coil	GVWR (lbs)
FT-3 R	2,990		
FT-8 R	8,000	FT-3 Coil	2,900
FT-10 R	10,000	FT-6 Coil	7,500
FT-14-2 R	16,900		

Generator Compressor Series

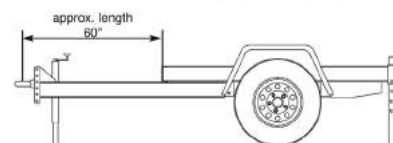
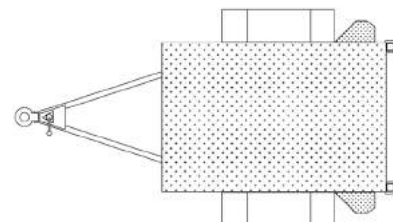
Model-Reel	GVWR (lbs)
FT-3 GEN	3,500
FT-6 GEN	7,000
FT-10 GEN	9,980
FT-12 GEN	14,900
FT-14 GEN	17,000
FT-16 GEN	19,200
FT-20-2 GEN	24,000
FT-30-3 GEN	35,000
FT-36-3 GEN	41,500



FT-8R

Options commonly chosen with Generator Compressor series:

- * 40 to 50 gallons gallons
- * Toolbox, jack & lug wrench
- * Spare tire mounted
- * Cable Box w/locking cover
- *Hydraulic surge brakes
- * Parking Brake



FELLING TRAILERS

Trailers

WD Series

Model	GVWR (lbs)
FT-10-WD	9,980
FT-12-WD	14,800
FT-14-WD	17,300
FT-15-WD	18,000
FT-16-WD	19,700
FT-18-3-WD	21,900
FT-20-3	24,100



FT-16-2TT

Tender/Frame Series Models

Model-Reel	GVWR (lbs)
FT-12-2-TT	14,500
FT-14-2-TT	16,600
FT-16-2TT	18,800
FT-18-2TT	21,200
FT-20-2 TT	23,600
FT-24-2-TT	28,000
FT-30-2-TT	34,500
FT-40-2-TT	42,720
FT-45-2-TT	51,800
FT-45-3-TT	51,800
FT-50-2 NN-TT	57,500
FT-70-2 NN-TT	80,000
FT-75-2 NN-TT	86,000
FT-80-3 NN-TT	92,000
FT-100-4-NN-TT	113,000



FT-45-2TT

Sprayer/Chopper Series

Model	GVWR (lbs)
FT-16-NT	21,900
FT-16-S	21,900
FT-16-WT	21,900
FT-16 TS	21,900
FT-24 TS	30,600
FT-30-WT	37,300
FT-40-WT	48,100
FT-40-S	48,100



FT-20-SA



Utility Tilt Series Trailers (Pan)

Model	GVWR (lbs)
FT-3 T	2,900
FT 6T	7,000
FT 7 T1	8,000
FT-10T	9,980
Ft-12T	14,800
FT-14T	17,300
FT-16T	19,800



FT-3A

"IT-E" Series Trailers (Industrial Tilt)

Model	GVWR (lbs)
FT-10-IT-E	9,980
FT-12-IT-E	15,200
FT-14-IT-E	17,450
FT-16-IT-E	19,600

"IT-I" Series Trailers (Industrial Tilt)

Model	GVWR (lbs)
FT-10-IT-I	9,980
FT-12-IT-I	15,200
FT-14-I	17,450
FT-15-IT-I	18,000
FT-16-IT-I	19,600

FT-6T



Deck Over Tilt Series Models

Model	GVWR (lbs)
FT-12-2-T	19,300
FT-16-2-T	21,600
FT-18-2-T	23,700
FT-20-2-T	25,900
FT-24-2-T	31,300
FT-30-2-T	37,800
FT-40-2-T	45,800
FT-50-3-T	61,200
Models with Options	GVWR
Stationary platforms	
FT-20-2-T	25,900
FT-24-2-T	31,300
FT-30-2-T	37,800
FT-40-2-T	45,800



FT-24-2-T

Air Tilt Series

Model	GVWR (lbs)
FT-20-2 TA	25,900
FT-24-2-TA	31,300
FT-30-2-TA	39,200
FT-40-2-TA	44,920
FT-50-3-TA	60,600



DT Series Drop-Deck Hydraulic Dump

Model	GVWR (lbs)
FT-6 DT	7,000
FT-10 DT	9,980

FT-6 DT



DT-HD Series Heavy Duty

Model	GVWR (lbs)
FT-12 DT-HD	15,900
FT-14 DT-HD	18,200
FT-16 DT-HD	20,800

DT-DO Series Deck-Over

Model	GVWR (lbs)
FT-12-2-DT	16,000
FT-14-2 DT	18,400
FT-16-2-DT	21,300



FT-12-ESD

Side Dump Series

Model	GVWR (lbs)
FT-12-F/SD	15,500
FT-14 F/SD	18,000
FT 16 F/SD	20,800

DT-U Series Utility/Grain Dump

Model	GVWR (lbs)
FT-18-2-DT-U	22,500
FT-20-2-DT-U	25,900
FT-24-2 DT-U	31,400
FT-30-2 DT-U	38,000



Backhoe Loaders

Model	Net Power hp	Operating Weight (lbs)	Dig Depth ft
416F	87	24251	14.3
420F/420F IT	93	24251	14.3
430F/430F IT	107	24,251	15.41
450F	127	27115	17.2

Skid Steer Loaders

Model	Gross Power hp	Operating Weight lbs	Operating Capacity lbs
226D	67.1	5,705	1,550
232D	67.1	6,213	1,850
236D	74.3	6,559	1,800
242D	74.3	6,980	2,150
246D	74.3	7,424	2,150
262D	74.3	8,011	2,700



Multi Terrain Loaders



Model	Net Power hp	Operating Weight lb
247B Series 3	56	6997
257D	73.2	8048
277D	72.9	9293
287D	42.9	9929
297D	95	10,120
279D XHP	106	10,814

* - Cat engine with ACERT technology

Compact Track Loaders

Model	Net Power hp	Operating Weight lbs	Operating Capacity 50% tipping load (lbs)	Ground contact area (psi)
239D	65.8	7,289	2,050	5.3
249D	65.8	7,685	2,300	5.6
259D	73.2	8,945	2,900	4.8
279D	73.7	9,893	2,935	4.8
289D	72.9	10,533	3,800	4.6
299D	95	10,718	4,250	4.4
299D XHP	106	11,612	4,650	5.3



Integrated ToolCarriers

Model	Net Power		Operating Weight		Bucket Range	
	hp	kW	lb	kg	yd ³	m ³
IT14G2	98	72	18,632	8450	1.6-1.8	1.2-1.4



CAT®

Wheel Loaders

Model	Net Power hp	Operating Weight lbs	Bucket Capacity yd3
Compact			
906H2	69	12,412	1.18
907H2	69	12,809	1.3
908H2	69	14,253	1.4
914G	95	17,530	1.7
914G2	95	17,530	1.7
IT14G	95	18,632	1.7
IT14G2	95	18,632	1.7
Small			
924K2	141	28,360	2.5-6.5
930K	154	30,479	2.7-6.5
938K	169	35,104	3.2-6.5
Mid-Size			
950K	211	42,811	3.25-12
962K	221	45,055	3.25-12
966K	267	53,311	3.25-12
972K	288	57,770	3.75-13
980K	369	68,862	4.0-12.20



Telehandlers



Model	Power hp	Operating Weight lbs	Rated Capacity lbs	Lift Height (stabilizers down) ft-in
TH255C	74	11,000	5,500	18.37
TH406C	101	18,364	8,150	20
TH407C	101	19,246	8,150	24
TH514C	101	24,890	11,021	45
TL1055C	142.1	34,160	10,000	55.1
TL1255C	142.1	35,860	12,000	54.3
TL642C	99	21,245	6,500	42

Excavators

Model	Net Power hp	Operating Weight lb	Dig Depth ft-in
Mini Excavators			
300.9D	13	2,060	8
301.4C	17.7	3,417	10.4
301.7D	17.7	3,810	10.4
301.7D CR	17.7	3,726	15
302.2D	17.9	4,464	14
302.4D	17.7	5,115	13
302.7D CR	20.7	5,886	16.5
303.5E CR	31.6	7,734	7.7-8.2+
304E CR	40	8,497	8.0-8.4+
305.5E CR	44.2	11,618	7.7-9.0+
305E CR	40.2	10,836	7.6-8.8+
308E2 CR SB	65	18,519	14.2

+ standard or extended stick



Small Excavators			
312E	91	33,080	Cat C4.4 ACERT
314E CR	89	32,600	Cat C4.4 ACERT
316E	113	38,801	Cat C4.4 ACERT
318E	113	40,010	Cat C4.4 ACERT
319D L/LN	125	44,225	Cat C4.2 ACERT*

Medium Excavator			
320E L	153	54,450	Cat C6.6 ACERT
320E LRR	153	56,440	Cat C6.6 ACERT
321D LCR	148	51,875	Cat C6.4 ACERT
323D L	150	50,706	Cat C6.4 ACERT
323D L/LN	150	52,910	Cat C6.4 ACERT
324D/324 D L	166	56,400	Cat C7 ACERT
324E	190	64,990	Cat C7.1 ACERT
328D LCR	204	87,850	Cat C7 ACERT
329D/329D L	204	64,500	Cat C7 ACERT
329E	228	689,580	Cat C7.1 ACERT

Model	Net Power hp	Operating Weight lb	Engine
Small Excavators			
312E	91	33,080	Cat C4.4 ACERT
314E CR	89	32,600	Cat C4.4 ACERT
316E	113	38,801	Cat C4.4 ACERT
318E	113	40,010	Cat C4.4 ACERT
319D L/LN	125	44,225	Cat C4.2 ACERT*

Large Excavators			
330D L/LN	268	82,673	Cat C9 ACERT
336D/D L Series 2	268	81,761	Cat C9
336E L	300	86,200	Cat C9.3 (ATAAC)
336E H Hybrid	286	82,000	Cat C9.3 (ATAAC)
349E	396	117,500	Cat C13 ACERT
374D L	476	156,819	Cat C15 ACERT
390D L	523	190,016	Cat C18 ACERT



Track Type Tractors

Model	Power		Operating Weight		Blade
	hp	kW	lb	kg	
D3K2 XL	80.0	59.7	17,544	7958	VPAT
D3K2 LGP	80.0	59.7	18,525	8403	VPAT
D4K2 XL	92.0	68.8	18,080	8201	VPAT
D4K2 LGP	92.0	68.8	18,761	8510	VPAT
D5K2 XL	104.0	77.6	20,534	9314	VPAT
D5K2 LGP	104.0	77.6	21,266	9646	VPAT
D6K XL	125.0	93.2	28,409	12 886	VPAT
D6K LGP	125.0	93.2	29,690	13 467	VPAT
D6N XL	150.0	112	36,392	16 507	VPAT, SU
D6N LGP	150.0	112	39,895	18 096	VPAT
D6T XL/XW/LGP	205.0	153	46,158-54,165	20 937-24 569	S, SU, A, VPAT
D7E STD	235.0	175	56,669-57,771	25 700-26 055	S, SU, U, A
D7E LGP	235.0	175	62,115-62,886	28 170-28 525	S
D8T STD/LGP	310.0	231	87,733-89,210	39 795-40 465	SU, U, A
D9T	410.0	306	110,447	50 098	SU, U

Motor Graders

Model	Base Power hp (1st gear)	Operating Weight lb	Standard Blade Length ft
12M3	179	42,647	12
12M3 AWD	179	44,614	12
140M3	200	43,950	12
140M3	200	45,917	12
160M3	221	45,547	14
160M3 AWD	221	47,514	14
120M2 AWD	145	41,589	12
120M2	145	39,892	12
12M2 AWD	173	44,349	12
12M2	173	42,383	12
140M2	193	43,686	12
140M2 AWD	193	45,652	12
14M	259	53,738	14
160M2	213	45,283	14
160M2 AWD	213	47,249	14
16M	297	67,338	16
24M	533	145,151	24



Articulated Trucks

Model	Net Power hp	Operating Weight Empty lb	Rated Payload (tons)
725C	314	51,191	26
730C	367	53,131	31
735B	437	71,758	36
740B	474	75,857	43.5
740B EJ	474	81,536	42



Single Drum Soil Compactors

Model	Gross Power		Operating Weight		Drum Width	
	hp	kW	lb	kg	in	mm
CS44	100	75	15,961	7240	66	1676
CP44	100	75	16,832	7635	66	1676
CS54B	131	98	23,265	10 555	84	2134
CS56B	157	117	25,346	11 500	84	2134
CP56B	157	117	25,707	11 665	84	2134
CS68B	157	117	31,572	14 325	84	2134
CP68B	157	117	32,370	14 685	84	2134
CS74B	173.7	129.5	35,264	16 000	84	2134
CP74B	173.7	129.5	36,048	16 355	84	2134
CS78B	173.7	129.5	41,214	18 700	84	2134



Asphalt Compactors

Model	Gross Power		Operating Weight		Drum Width	
	hp	kW	lb	kg	in	mm
CB14	21.6	16.1	3,571	1620	31	800
CB14XW	21.6	16.1	4,057	1840	39	1000
CB14 Full Flush	21.6	16.1	3,528	1600	35	900
					31	800
CB22	33.0	24.6	5,512	2500	39	1000
CB24	33.0	24.6	5,952	2700	47	1200
CB32	33.0	24.6	5,291	2400	47	1200
CB34	46.0	34.1	8,688	3940	51	1300
CB34XW	46.0	34.1	9,259	4200	55	1400
CC34	46.0	34.1	8,090	3670	51	1300
CB54 XW	137.0	102.0	26,230	11 898	79	2000
CB64	137.0	102.0	28,616	12 980	84	2130
CD54	99.5	74.5	20,944	9500	67	1700

Asphalt Pavers

Track Asphalt Pavers

Model	Gross Power	Standard Paving Width (ft)	Max. Operating Weight (lbs)
AP1055E	225	10-19.5	44,558
AP255E	46	4.6-8.5	9921
AP555E	142	8-15.5	39,044
AP655D	174	8.17-16.40	42,252

Wheel Asphalt Pavers

Model	Gross Power	Standard Paving Width (ft)	Max. Operating Weight (lbs)
AP1000E	225	10-19.5	43,008
AP500E	142	8-15.5	39,044
AP600D	174	8.17-16.4	40,124

Screeds

Model	Weight w/electric heat (lbs)	Standard Paving Width (ft)	Max. Paving width (ft)
AS3251C	6450	8-15.5	20.17
AS3301C	6450	10-19.5	26.16
AS4251C	8233	8.3-16.3	26.3
AS4252C	7055	8.3-16.3	26.3



Asphalt Paving Equipment

Model	Gross Power		Operating Tractor Weight		Standard Paving Width	
	hp	kW	lb	kg	ft-in	mm
AP255E	46	34.1	9,920	4500	4'7"	1400
AP500E	142	106	27,760	12 590	8'2"	2400
AP600D	174	129	31,299	14 197	8'0"	2400
AP1000E	225	168	33,352	15 160	10'0"	3000
AP1055E	225	168	36,982	16 810	10'0"	3000



Cold Planers

Model	Gross Power		Operating Weight	Cutting Width Standard	Max cutting depth
	hp	kW			
PM102	225	165	38,810	40	12
PM102 Wheel	225	165	37,705	40	12
PM200 - 2.0M	575	423	69,445	88	12.6
PM201	650	478	86,360	83	12



Reclaimers/Stabilizers

Model	Gross Power		Operating Weight	Cutting Width Standard	Max cutting depth
	hp	kW			
RM300	350	258	53,911	96	20
RM500	540	397	62,060	96	20



Pneumatic Tire Compactors

Model	Gross Power		Operating Weight		Rolling Width	
	hp	kW	lb	kg	in	mm
PS150C	100	75	28,535	12 940	69	1743
PS150C HW	100	75	38,000	17 273	69	1743
PS360C	130	98	55,115	25 000	90	2275

ORDERING INFORMATION

By Phone: In Miami or outside the US, please call 305-592-0556.
In Florida call (800) 366-8666.

For faster service, our bilingual operators are ready to take your orders and answer questions about our products. Our telephone lines are open 8 am to 5 pm EST, Monday thru Friday.

Please let us know your shipping preference and if you require a freight forwarder to handle your shipment.

By Fax: (305) 463-6063 or e-mail at: ktccat@kellytractor.com

You can request quotations or orders by utilizing our dedicated fax line or via e-mail. Be sure to include your telephone and fax numbers, along with your name, address, country and any shipping preferences. We usually respond within 24 hours.

Ordering by Mail

To order by mail, please mail orders to:

Kelly Tractor Co.
Catalog Sales Division
8255 NW 58th St • Miami FL 33166 USA

OPEN ACCOUNT

Open accounts are available to qualifying customers. Apply today for an open account by completing a Credit Application. We can fax or e-mail you an application for credit immediately. If you already have an account open with us, you may use it to purchase from the Catalog Sales Department.

Wire Transfers

Please direct all wire transfers to:

Bank Name: Suntrust – Miami, N.A.
Bank ABA#: 061000104
Bank address: 777 Brickell Ave, Miami FL 33131-2809 USA

Account Name: Kelly Tractor Co.
Account address: 8255 NW 58 St., Miami FL 33166

Account number: 0189001144422
Swift Code: SNTRUUS3A
Beneficiary ACCT Name: 8255 NW 58 St., Miami FL 33166

KELLY TRACTOR

Deposits

Many of our regular customers maintain deposits with Kelly Tractor Co. to avoid delays in forwarding payment. Please inquire about this payment option.

Credit Card

Your orders can be charged to your American Express, Visa or Mastercard. To purchase merchandise on a credit card, just fax or e-mail us a signed credit card agreement. You can request the credit card agreement form by phone or fax.

Checks

Make checks payable to "Kelly Tractor Co." Foreign customers, please forward cashiers check or certified checks by a US Bank in order to avoid lengthy check clearing times.

Western Union "Quick Pay"

To use "Quick Pay" Western Union payments, follow these instructions:

- Contact Kelly Tractor Co. for the Western Union Office nearest you or check the yellow pages or internet.
- Upon arrival, tell the agent that you are a "Quick Pay" customer.
- Complete the blue "Quick Pay" payment form indicating:

Pay to: Kelly Tractor Co.

Code/City/Locale: KELLYTRACTOR,FL.

Name of account: Your name

Account:

Shown on your notice or correspondence. This is especially important for proper credit to your account.

KELLY TRACTOR

Serving The Industry Since 1933



MIAMI HEADQUARTERS

8255 NW 58 St.
 (305) 592-5360 FAX (305) 477-2024



DAVIE

2801 Reese Rd.
 (954) 581-8181 FAX (954) 581-6464



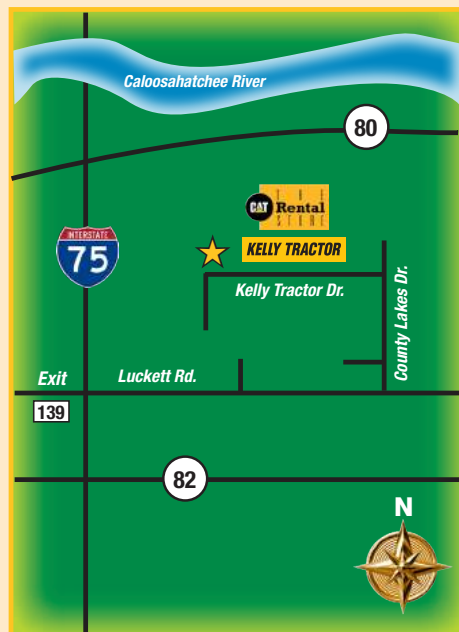
WEST PALM BEACH

5460 Okeechobee Blvd.
 (561) 683-1231 FAX (561) 683-4591



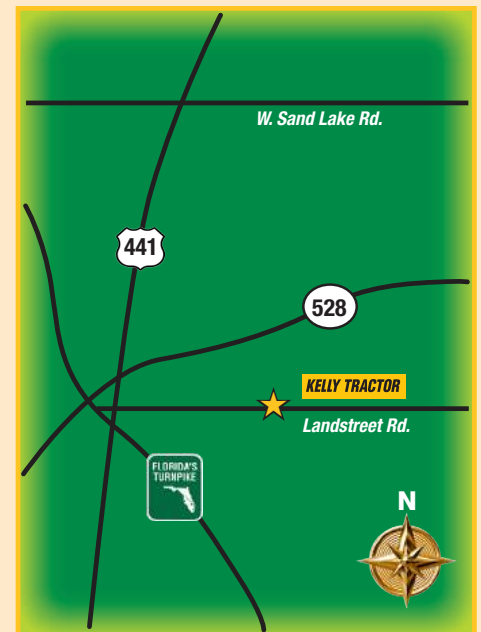
CLEWISTON

801 E. Sugarland Hwy.
 (863) 983-8177 FAX (863) 902-1000



FT. MYERS

9651 Kelly Tractor Dr.
 (239) 693-9233 FAX (239) 693-8876



ORLANDO

144 W. Landstreet Rd., Orlando, FL 32824
 (407) 568-8055 FAX (407) 568-7701
 Link-Belt Cranes & Nissan Forklifts only.

*Maps are not drawn to scale and are intended for general representation only. For detailed directions, please call the phone number of the specific location above.

Sales 305-592-0556 • Fax 305-463-6063
 Parts: 305-592-7763 • Fax: 305-463-6066

www.kellytractor.com

KELLY TRACTOR



Kelly Tractor Co. Catalog Sales Division

8255 NW 58 Street, Miami, Florida 33166

Sales 305-592-0556 • Fax 305-463-6063

Parts: 305-592-7763 • Fax: 305-463-6066

www.kellytractor.com